



# **Five Year History of New Freshmen**

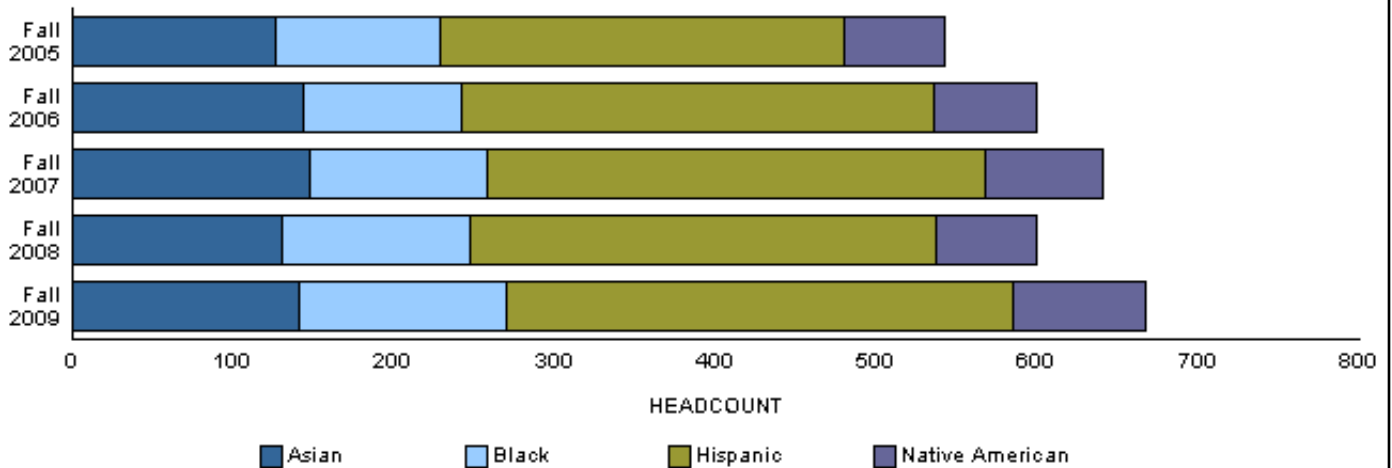
# Five Year History of New Freshmen by: Residency

## Headcount

Year	Resident		Nonresident		Total Headcount	%Change/ Previous Year
	Number	Percent	Number	Percent		
Fall 2005	3,155	81.1	737	18.9	3,892	
Fall 2006	3,259	79.6	834	20.4	4,093	5.2
Fall 2007	3,445	78.4	947	21.6	4,392	7.3
Fall 2008	3,482	79.1	922	20.9	4,404	0.3
<b>Fall 2009</b>	<b>3,350</b>	<b>78.2</b>	<b>935</b>	<b>21.8</b>	<b>4,285</b>	<b>-2.7</b>

# Minority Status

Year	Minority		Other Students	
	Number	Percent	Number	Percent
Fall 2005	542	13.9	3350	86.1
Fall 2006	600	14.7	3493	85.3
Fall 2007	641	14.6	3751	85.4
Fall 2008	600	13.6	3804	86.4
Fall 2009	667	15.6	3618	84.4



Institutional Research  
 Profile of **All New** Freshmen Enrolled Fall Semesters  
 Five Year Trend in High School Admissions Scores by College

	2005	2006	2007	2008	2009
<b>Mean High School Rank</b>					
Agricultural Sciences	75	75	76	74	74
Applied Human Sciences	70	72	71	70	72
Business	80	80	79	77	79
Engineering	78	80	80	82	80
Liberal Arts	70	71	71	71	72
Warner College of Natural Resources	72	70	74	71	73
Natural Sciences	76	74	73	76	75
Veterinary Medicine + Biomedical Sci	78	81	84	88	89
Intra–University	63	64	63	65	66
<b>Total</b>	<b>71</b>	<b>72</b>	<b>72</b>	<b>72</b>	<b>72</b>
<b>Mean SAT Verbal Score</b>					
Agricultural Sciences	568	552	547	567	558
Applied Human Sciences	523	526	520	525	531
Business	564	553	562	559	556
Engineering	585	567	572	579	574
Liberal Arts	568	566	581	583	577
Warner College of Natural Resources	599	586	593	540	560
Natural Sciences	568	569	567	561	573
Veterinary Medicine + Biomedical Sci	574	577	584	616	614
Intra–University	525	527	523	527	534
<b>Total</b>	<b>555</b>	<b>551</b>	<b>555</b>	<b>555</b>	<b>559</b>
<b>Mean SAT Math Score</b>					
Agricultural Sciences	561	559	560	569	554
Applied Human Sciences	532	536	542	543	544
Business	592	579	597	585	604
Engineering	621	630	623	639	632
Liberal Arts	544	543	552	552	545
Warner College of Natural Resources	565	574	592	540	565
Natural Sciences	583	576	572	569	582
Veterinary Medicine + Biomedical Sci	583	583	593	617	615
Intra–University	542	543	539	541	547
<b>Total</b>	<b>563</b>	<b>561</b>	<b>566</b>	<b>566</b>	<b>572</b>

Institutional Research  
 Profile of **All New** Freshmen Enrolled Fall Semesters  
 Five Year Trend in High School Admissions Scores by College

	2005	2006	2007	2008	2009
<b>Mean Composite ACT Score</b>					
Agricultural Sciences	24.4	24.2	23.8	24.0	24.4
Applied Human Sciences	22.8	22.7	23.1	22.8	23.2
Business	25.4	25.1	25.6	25.4	26.0
Engineering	26.5	26.3	26.4	26.6	26.8
Liberal Arts	24.0	24.3	24.6	24.6	24.6
Warner College of Natural Resources	24.5	23.6	24.8	23.8	24.7
Natural Sciences	24.7	24.4	24.5	24.8	25.3
Veterinary Medicine + Biomedical Sci	25.0	25.1	26.1	27.0	27.5
Intra–University	22.7	23.0	22.8	22.8	23.3
<b>Total</b>	<b>24.0</b>	<b>23.9</b>	<b>24.2</b>	<b>24.1</b>	<b>24.6</b>
<b>Mean High School Grade Point Average</b>					
Agricultural Sciences	3.58	3.57	3.58	3.60	3.60
Applied Human Sciences	3.47	3.51	3.51	3.49	3.55
Business	3.74	3.74	3.71	3.68	3.70
Engineering	3.68	3.72	3.75	3.78	3.77
Liberal Arts	3.48	3.51	3.51	3.52	3.56
Warner College of Natural Resources	3.49	3.51	3.56	3.46	3.57
Natural Sciences	3.61	3.58	3.58	3.60	3.63
Veterinary Medicine + Biomedical Sci	3.68	3.72	3.82	3.91	3.99
Intra–University	3.31	3.35	3.33	3.36	3.40
<b>Total</b>	<b>3.50</b>	<b>3.52</b>	<b>3.53</b>	<b>3.53</b>	<b>3.57</b>
<b>Mean CCHE Index</b>					
Agricultural Sciences	114.7	113.9	113.4	114.8	114.0
Applied Human Sciences	109.5	110.1	110.7	109.7	111.3
Business	119.2	119.1	119.5	118.2	119.7
Engineering	120.8	121.2	121.6	122.4	122.5
Liberal Arts	112.3	113.2	113.8	113.9	114.2
Warner College of Natural Resources	113.5	112.2	115.1	111.3	114.5
Natural Sciences	115.7	114.6	115.0	115.5	116.7
Veterinary Medicine + Biomedical Sci	117.9	118.6	121.5	125.0	126.2
Intra–University	106.9	107.8	107.1	107.7	109.2
<b>Total</b>	<b>112.5</b>	<b>112.7</b>	<b>113.2</b>	<b>113.2</b>	<b>114.4</b>

For the purposes of making index comparisons across years, the 2004 index calculation formula is used for all years.

Institutional Research  
 Profile of **Resident** Freshmen Enrolled Fall Semesters  
 Five Year Trend in High School Admissions Scores by College

	2005	2006	2007	2008	2009
<b>Mean High School Rank</b>					
Agricultural Sciences	76	73	74	72	73
Applied Human Sciences	70	72	71	69	72
Business	81	80	79	77	79
Engineering	78	81	80	82	80
Liberal Arts	71	71	72	72	72
Warner College of Natural Resources	68	70	75	71	73
Natural Sciences	76	75	73	75	74
Veterinary Medicine + Biomedical Sci	78	81	84	88	88
Intra–University	64	65	64	66	66
<b>Total</b>	<b>71</b>	<b>72</b>	<b>71</b>	<b>72</b>	<b>72</b>
<b>Mean SAT Verbal Score</b>					
Agricultural Sciences	575	525	558	558	552
Applied Human Sciences	518	518	518	516	531
Business	562	553	559	560	554
Engineering	576	570	580	575	575
Liberal Arts	567	572	588	586	582
Warner College of Natural Resources	593	605	619	541	534
Natural Sciences	569	570	567	564	566
Veterinary Medicine + Biomedical Sci	574	575	580	618	618
Intra–University	528	535	525	525	530
<b>Total</b>	<b>553</b>	<b>553</b>	<b>557</b>	<b>554</b>	<b>556</b>
<b>Mean SAT Math Score</b>					
Agricultural Sciences	561	547	579	558	564
Applied Human Sciences	525	531	539	538	543
Business	588	573	592	589	596
Engineering	617	622	618	633	632
Liberal Arts	544	547	552	549	549
Warner College of Natural Resources	561	582	603	549	544
Natural Sciences	582	573	568	572	572
Veterinary Medicine + Biomedical Sci	570	580	581	616	608
Intra–University	539	546	537	538	543
<b>Total</b>	<b>560</b>	<b>559</b>	<b>563</b>	<b>565</b>	<b>566</b>

Institutional Research  
 Profile of **Resident** Freshmen Enrolled Fall Semesters  
 Five Year Trend in High School Admissions Scores by College

	2005	2006	2007	2008	2009
<b>Mean Composite ACT Score</b>					
Agricultural Sciences	24.2	23.4	23.3	23.5	23.9
Applied Human Sciences	22.7	22.7	23.0	22.7	23.1
Business	25.3	25.1	25.5	25.3	25.9
Engineering	26.3	26.3	26.3	26.4	26.7
Liberal Arts	24.1	24.3	24.6	24.5	24.5
Warner College of Natural Resources	24.0	23.4	24.5	23.6	24.3
Natural Sciences	24.7	24.2	24.3	24.6	24.9
Veterinary Medicine + Biomedical Sci	25.0	25.1	26.1	26.9	27.4
Intra–University	22.7	23.0	22.8	22.8	23.2
<b>Total</b>	<b>23.9</b>	<b>23.9</b>	<b>24.0</b>	<b>24.0</b>	<b>24.3</b>
<b>Mean High School Grade Point Average</b>					
Agricultural Sciences	3.66	3.55	3.58	3.54	3.58
Applied Human Sciences	3.48	3.54	3.52	3.49	3.55
Business	3.75	3.74	3.72	3.67	3.71
Engineering	3.68	3.72	3.75	3.79	3.76
Liberal Arts	3.50	3.53	3.53	3.54	3.56
Warner College of Natural Resources	3.48	3.46	3.62	3.51	3.55
Natural Sciences	3.63	3.59	3.57	3.59	3.59
Veterinary Medicine + Biomedical Sci	3.69	3.74	3.83	3.92	3.99
Intra–University	3.33	3.37	3.34	3.38	3.41
<b>Total</b>	<b>3.51</b>	<b>3.53</b>	<b>3.53</b>	<b>3.54</b>	<b>3.56</b>
<b>Mean CCHE Index</b>					
Agricultural Sciences	115.4	111.9	112.4	112.4	113.5
Applied Human Sciences	109.4	110.1	110.5	109.1	111.0
Business	119.2	119.2	119.3	118.0	119.7
Engineering	120.4	120.9	121.0	121.8	121.8
Liberal Arts	112.6	113.6	114.1	114.0	114.2
Warner College of Natural Resources	112.0	110.9	115.1	111.6	113.3
Natural Sciences	116.0	114.4	114.3	115.0	115.5
Veterinary Medicine + Biomedical Sci	117.7	118.7	121.2	125.1	126.0
Intra–University	107.1	108.2	107.2	107.8	109.0
<b>Total</b>	<b>112.5</b>	<b>112.7</b>	<b>112.9</b>	<b>112.8</b>	<b>113.7</b>

For the purposes of making index comparisons across years, the 2004 index calculation formula is used for all years.

Institutional Research  
 Profile of **Nonresident** Freshmen Enrolled Fall Semesters  
 Five Year Trend in High School Admissions Scores by College

	2005	2006	2007	2008	2009
<b>Mean High School Rank</b>					
Agricultural Sciences	73	79	78	79	76
Applied Human Sciences	66	70	70	73	69
Business	76	78	76	76	78
Engineering	82	78	82	82	81
Liberal Arts	65	66	67	69	73
Warner College of Natural Resources	79	72	73	68	72
Natural Sciences	74	71	75	78	79
Veterinary Medicine + Biomedical Sci	79	79	83	87	90
Intra–University	58	60	60	62	65
<b>Total</b>	<b>69</b>	<b>71</b>	<b>72</b>	<b>73</b>	<b>75</b>
<b>Mean SAT Verbal Score</b>					
Agricultural Sciences	565	571	543	571	561
Applied Human Sciences	536	540	524	543	532
Business	570	552	570	556	561
Engineering	624	561	556	586	573
Liberal Arts	572	546	562	577	563
Warner College of Natural Resources	605	573	576	539	570
Natural Sciences	564	567	565	557	584
Veterinary Medicine + Biomedical Sci	574	580	590	610	610
Intra–University	515	502	518	530	543
<b>Total</b>	<b>558</b>	<b>548</b>	<b>550</b>	<b>557</b>	<b>566</b>
<b>Mean SAT Math Score</b>					
Agricultural Sciences	561	567	555	575	550
Applied Human Sciences	548	546	547	553	549
Business	601	603	610	568	621
Engineering	638	645	633	653	633
Liberal Arts	545	526	553	561	533
Warner College of Natural Resources	568	568	584	531	573
Natural Sciences	584	583	578	564	596
Veterinary Medicine + Biomedical Sci	603	587	612	618	621
Intra–University	550	534	545	547	554
<b>Total</b>	<b>570</b>	<b>565</b>	<b>572</b>	<b>569</b>	<b>581</b>

Institutional Research  
 Profile of **Nonresident** Freshmen Enrolled Fall Semesters  
 Five Year Trend in High School Admissions Scores by College

	2005	2006	2007	2008	2009
<b>Mean Composite ACT Score</b>					
Agricultural Sciences	24.8	25.6	24.9	25.0	25.1
Applied Human Sciences	23.2	23.1	24.0	23.8	24.1
Business	25.6	24.8	26.2	25.7	26.2
Engineering	27.8	26.5	27.0	27.7	27.3
Liberal Arts	23.4	23.6	24.2	25.2	25.2
Warner College of Natural Resources	25.7	24.0	25.4	24.5	25.1
Natural Sciences	24.7	25.6	26.0	25.3	26.8
Veterinary Medicine + Biomedical Sci	25.1	25.0	26.4	27.1	27.7
Intra–University	23.1	22.9	23.1	23.5	24.2
<b>Total</b>	<b>24.4</b>	<b>24.3</b>	<b>24.8</b>	<b>24.9</b>	<b>25.6</b>
<b>Mean High School Grade Point Average</b>					
Agricultural Sciences	3.50	3.59	3.57	3.67	3.61
Applied Human Sciences	3.40	3.41	3.44	3.49	3.53
Business	3.70	3.71	3.67	3.73	3.66
Engineering	3.64	3.72	3.76	3.74	3.81
Liberal Arts	3.37	3.40	3.43	3.46	3.56
Warner College of Natural Resources	3.50	3.58	3.50	3.34	3.59
Natural Sciences	3.52	3.50	3.60	3.64	3.73
Veterinary Medicine + Biomedical Sci	3.65	3.66	3.79	3.88	3.98
Intra–University	3.20	3.23	3.24	3.28	3.39
<b>Total</b>	<b>3.44</b>	<b>3.48</b>	<b>3.51</b>	<b>3.53</b>	<b>3.62</b>
<b>Mean CCHE Index</b>					
Agricultural Sciences	113.9	116.3	114.8	118.1	114.6
Applied Human Sciences	110.0	110.1	111.4	112.1	112.6
Business	119.0	118.7	120.4	119.3	119.6
Engineering	124.0	122.1	123.8	124.6	124.6
Liberal Arts	110.6	110.4	112.3	113.7	114.5
Warner College of Natural Resources	115.8	114.1	115.1	110.5	115.8
Natural Sciences	114.8	115.5	117.7	116.9	120.4
Veterinary Medicine + Biomedical Sci	118.6	118.3	122.4	124.7	126.6
Intra–University	105.9	105.8	106.2	107.0	110.6
<b>Total</b>	<b>112.7</b>	<b>113.0</b>	<b>114.4</b>	<b>114.6</b>	<b>116.9</b>

For the purposes of making index comparisons across years, the 2004 index calculation formula is used for all years.

# **Fall 2009 Freshmen**

# Fall 2009 New Freshmen by:

## Residency

	Number	Percent
Resident	3,350	78.2
Nonresident	935	21.8
<b>Total</b>	<b>4,285</b>	<b>100.0</b>

## Gender

	Resident		Nonresident		Total	
	No.	Percent	No.	Percent	No.	Percent
Men	1,523	45.5	398	42.6	1,921	44.8
Women	1,827	54.5	537	57.4	2,364	55.2
<b>Total</b>	<b>3,350</b>	<b>100.0</b>	<b>935</b>	<b>100.0</b>	<b>4,285</b>	<b>100.0</b>

## Ethnicity

	Resident		Nonresident		Total	
	No.	Percent	No.	Percent	No.	Percent
Native American	66	2.0	16	1.7	82	1.9
Black	107	3.2	22	2.4	129	3.0
Asian American	107	3.2	34	3.6	141	3.3
Hispanic	254	7.6	61	6.5	315	7.4
White	2,622	78.3	692	74.0	3,314	77.3
International	2	0.1	37	4.0	39	0.9
Other	192	5.7	73	7.8	265	6.2
<b>Total</b>	<b>3,350</b>	<b>100.0</b>	<b>935</b>	<b>100.0</b>	<b>4,285</b>	<b>100.0</b>

# Full-Time/Part-Time Enrollment

	Resident	Nonresident	Total	Percent of University
<b>New Freshmen</b>				
Full-Time	3,319	914	4,233	98.8
Part-Time	31	21	52	1.2
<b>Total</b>	<b>3,350</b>	<b>935</b>	<b>4,285</b>	<b>100.0</b>

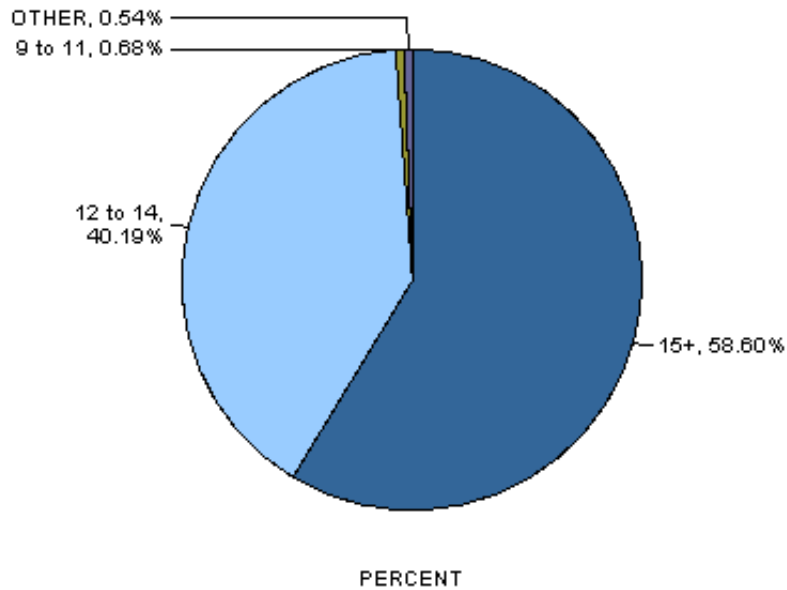
Full-time students = undergraduates enrolled for 12 or more credits Fall, Spring (9 - Summer)

## College

	Resident		Nonresident		Total	
	No.	Percent	No.	Percent	No.	Percent
<b>New Freshmen</b>						
Agricultural Sciences	103	3.1	91	9.7	194	4.5
Applied Human Sciences	462	13.8	82	8.8	544	12.7
Business	228	6.8	64	6.8	292	6.8
Engineering	337	10.1	117	12.5	454	10.6
Intra-University	1,055	31.5	206	22.0	1,261	29.4
Liberal Arts	510	15.2	96	10.3	606	14.1
Natural Sciences	517	15.4	174	18.6	691	16.1
Veterinary Medicine + Biomedical Sci	86	2.6	53	5.7	139	3.2
Warner College of Natural Resources	52	1.6	52	5.6	104	2.4
<b>Total</b>	<b>3,350</b>	<b>100.0</b>	<b>935</b>	<b>100.0</b>	<b>4,285</b>	<b>100.0</b>

# Full-Time Status

Full-Time	RI Credits	Number of New Freshmen
Fees	(6+ credits)	4,266
Tuition	(9+ credits)	4,262
Financial Aid	(12+ credits)	4,233
Graduation in 4 Years	(15+ credits)	2,511



Institutional Research  
Freshman Profile  
Fall 2009

University	Admitted N= 10977				Enrolled N=4285			
	Res	Nonres	Total	Percent	Res	Nonres	Total	Percent
<b>High School GPA</b>								
2 – 2.499	1	3	4	0	1	1	2	0
2.5 – 2.999	277	329	606	6	160	65	225	5
3 – 3.599	2841	1734	4575	42	1545	335	1880	44
3.6 – 4.0	2631	1601	4232	39	1260	349	1609	38
4.001 – 10	831	586	1417	13	382	146	528	12
Valid Cases	6581	4253	10834	100	3348	896	4244	100
<b>Means</b>	<b>3.59</b>	<b>3.58</b>	<b>3.58</b>		<b>3.56</b>	<b>3.62</b>	<b>3.57</b>	
<b>Percentile Rank</b>								
1 – 29	41	38	79	1	24	13	37	1
30 – 49	579	217	796	10	358	57	415	12
50 – 59	738	234	972	12	407	56	463	13
60 – 79	2004	734	2738	34	1058	147	1205	34
80 – 89	1141	481	1622	20	581	115	696	19
90 – 99	1303	658	1961	24	617	152	769	21
Valid Cases	5806	2362	8168	100	3045	540	3585	100
<b>Means</b>	<b>73.4</b>	<b>75.3</b>	<b>73.9</b>		<b>72.1</b>	<b>74.4</b>	<b>72.5</b>	
<b>SAT Verbal</b>								
200 – 399	23	53	76	2	11	19	30	2
400 – 499	416	492	908	18	201	84	285	19
500 – 599	962	1290	2252	45	438	241	679	46
600 – 699	620	795	1415	29	229	174	403	27
700 – 800	143	170	313	6	42	36	78	5
Valid Cases	2164	2800	4964	100	921	554	1475	100
<b>Means</b>	<b>564</b>	<b>564</b>	<b>564</b>		<b>556</b>	<b>566</b>	<b>559</b>	
<b>SAT Math</b>								
200 – 399	24	37	61	1	9	12	21	1
400 – 499	375	435	810	16	181	87	268	18
500 – 599	880	1139	2019	41	388	190	578	39
600 – 699	761	1000	1761	35	302	227	529	36
700 – 800	124	189	313	6	41	38	79	5
Valid Cases	2164	2800	4964	100	921	554	1475	100
<b>Means</b>	<b>573</b>	<b>577</b>	<b>576</b>		<b>566</b>	<b>581</b>	<b>572</b>	
<b>ACT Composite</b>								
1 – 14	3	2	5	0	2	1	3	0
15 – 18	209	72	281	3	109	11	120	3
19 – 22	1636	513	2149	23	919	116	1035	26
23 – 26	2643	1054	3697	40	1374	241	1615	41
27 – 36	1924	1104	3028	33	878	275	1153	29
Valid Cases	6415	2745	9160	100	3282	644	3926	100
<b>Means</b>	<b>24.7</b>	<b>25.5</b>	<b>24.9</b>		<b>24.3</b>	<b>25.6</b>	<b>24.6</b>	
<b>CCHE Index</b>								
35 – 89	4	3	7	0	3	1	4	0
90 – 100	578	381	959	9	366	79	445	10
101 – 114	2739	1635	4374	40	1470	292	1762	42
115 – 160	3255	2229	5484	51	1505	523	2028	48
Valid Cases	6576	4248	10824	100	3344	895	4239	100
<b>Means</b>	<b>115</b>	<b>116</b>	<b>115</b>		<b>114</b>	<b>117</b>	<b>114</b>	

Institutional Research  
Freshman Profile  
Fall 2009

**Agricultural Sciences**

**Admitted N= 479**

**Enrolled N=194**

	Res	Nonres	Total	Percent	Res	Nonres	Total	Percent
<b>High School GPA</b>								
2 – 2.499	0	1	1	0	0	0	0	0
2.5 – 2.999	6	12	18	4	4	4	8	4
3 – 3.599	76	100	176	37	51	38	89	46
3.6 – 4.0	62	146	208	44	35	35	70	36
4.001 – 10	18	55	73	15	13	14	27	14
Valid Cases	162	314	476	100	103	91	194	100
<b>Means</b>	<b>3.58</b>	<b>3.68</b>	<b>3.64</b>		<b>3.58</b>	<b>3.61</b>	<b>3.60</b>	
<b>Percentile Rank</b>								
1 – 29	1	3	4	1	1	2	3	2
30 – 49	13	11	24	7	9	3	12	9
50 – 59	11	13	24	7	8	3	11	8
60 – 79	63	68	131	39	39	15	54	39
80 – 89	28	41	69	21	17	12	29	21
90 – 99	28	55	83	25	18	12	30	22
Valid Cases	144	191	335	100	92	47	139	100
<b>Means</b>	<b>73.7</b>	<b>77.9</b>	<b>76.1</b>		<b>73.2</b>	<b>76.3</b>	<b>74.3</b>	
<b>SAT Verbal</b>								
200 – 399	0	6	6	2	0	1	1	1
400 – 499	9	44	53	21	6	14	20	23
500 – 599	19	99	118	47	13	27	40	47
600 – 699	10	51	61	24	7	12	19	22
700 – 800	1	14	15	6	0	6	6	7
Valid Cases	39	214	253	100	26	60	86	100
<b>Means</b>	<b>548</b>	<b>558</b>	<b>557</b>		<b>552</b>	<b>561</b>	<b>558</b>	
<b>SAT Math</b>								
200 – 399	0	3	3	1	0	0	0	0
400 – 499	7	54	61	24	5	20	25	29
500 – 599	16	84	100	40	12	16	28	33
600 – 699	15	66	81	32	9	22	31	36
700 – 800	1	7	8	3	0	2	2	2
Valid Cases	39	214	253	100	26	60	86	100
<b>Means</b>	<b>572</b>	<b>556</b>	<b>558</b>		<b>564</b>	<b>550</b>	<b>554</b>	
<b>ACT Composite</b>								
15 – 18	3	9	12	3	2	1	3	2
19 – 22	47	43	90	25	32	16	48	30
23 – 26	74	79	153	42	47	17	64	40
27 – 36	37	69	106	29	21	24	45	28
Valid Cases	161	200	361	100	102	58	160	100
<b>Means</b>	<b>24.2</b>	<b>25.0</b>	<b>24.7</b>		<b>23.9</b>	<b>25.1</b>	<b>24.4</b>	
<b>CCHE Index</b>								
35 – 89	0	1	1	0	0	0	0	0
90 – 100	15	24	39	8	8	10	18	9
101 – 114	72	120	192	40	50	38	88	45
115 – 160	75	169	244	51	45	43	88	45
Valid Cases	162	314	476	100	103	91	194	100
<b>Means</b>	<b>114</b>	<b>116</b>	<b>115</b>		<b>114</b>	<b>115</b>	<b>114</b>	

Institutional Research  
Freshman Profile  
Fall 2009

Applied Human Sciences	Admitted N= 988				Enrolled N=544			
	Res	Nonres	Total	Percent	Res	Nonres	Total	Percent
<b>High School GPA</b>								
2.5 – 2.999	20	21	41	4	14	7	21	4
3 – 3.599	323	148	471	48	226	34	260	48
3.6 – 4.0	259	132	391	40	179	34	213	39
4.001 – 10	54	29	83	8	42	7	49	9
Valid Cases	656	330	986	100	461	82	543	100
<b>Means</b>	<b>3.54</b>	<b>3.54</b>	<b>3.54</b>		<b>3.55</b>	<b>3.53</b>	<b>3.55</b>	
<b>Percentile Rank</b>								
1 – 29	2	5	7	1	0	2	2	0
30 – 49	72	23	95	12	52	12	64	13
50 – 59	84	22	106	13	66	4	70	14
60 – 79	225	61	286	36	150	19	169	35
80 – 89	105	47	152	19	73	15	88	18
90 – 99	110	46	156	19	85	8	93	19
Valid Cases	598	204	802	100	426	60	486	100
<b>Means</b>	<b>71.7</b>	<b>73.4</b>	<b>72.1</b>		<b>71.9</b>	<b>69.0</b>	<b>71.5</b>	
<b>SAT Verbal</b>								
200 – 399	3	1	4	1	2	1	3	2
400 – 499	41	65	106	30	30	13	43	29
500 – 599	93	87	180	51	62	17	79	53
600 – 699	23	30	53	15	13	8	21	14
700 – 800	3	6	9	3	2	0	2	1
Valid Cases	163	189	352	100	109	39	148	100
<b>Means</b>	<b>534</b>	<b>532</b>	<b>533</b>		<b>531</b>	<b>532</b>	<b>531</b>	
<b>SAT Math</b>								
200 – 399	4	5	9	3	2	2	4	3
400 – 499	43	43	86	24	31	7	38	26
500 – 599	77	92	169	48	48	21	69	47
600 – 699	35	46	81	23	25	8	33	22
700 – 800	4	3	7	2	3	1	4	3
Valid Cases	163	189	352	100	109	39	148	100
<b>Means</b>	<b>540</b>	<b>547</b>	<b>544</b>		<b>543</b>	<b>549</b>	<b>544</b>	
<b>ACT Composite</b>								
1 – 14	1	0	1	0	1	0	1	0
15 – 18	37	15	52	6	28	3	31	6
19 – 22	252	77	329	37	181	20	201	38
23 – 26	261	94	355	40	181	28	209	40
27 – 36	93	63	156	17	64	17	81	15
Valid Cases	644	249	893	100	455	68	523	100
<b>Means</b>	<b>23.2</b>	<b>24.0</b>	<b>23.4</b>		<b>23.1</b>	<b>24.1</b>	<b>23.2</b>	
<b>CCHE Index</b>								
35 – 89	1	0	1	0	0	0	0	0
90 – 100	105	52	157	16	82	12	94	17
101 – 114	314	138	452	46	215	34	249	46
115 – 160	236	139	375	38	164	36	200	37
Valid Cases	656	329	985	100	461	82	543	100
<b>Means</b>	<b>111</b>	<b>112</b>	<b>112</b>		<b>111</b>	<b>113</b>	<b>111</b>	

Institutional Research  
Freshman Profile  
Fall 2009

Business	Admitted N= 762				Enrolled N=292			
	Res	Nonres	Total	Percent	Res	Nonres	Total	Percent
<b>High School GPA</b>								
2.5 – 2.999	3	5	8	1	2	2	4	1
3 – 3.599	126	89	215	29	70	22	92	32
3.6 – 4.0	286	133	419	56	127	27	154	54
4.001 – 10	65	40	105	14	28	8	36	13
Valid Cases	480	267	747	100	227	59	286	100
<b>Means</b>	<b>3.74</b>	<b>3.70</b>	<b>3.73</b>		<b>3.71</b>	<b>3.66</b>	<b>3.70</b>	
<b>Percentile Rank</b>								
1 – 29	0	1	1	0	0	1	1	0
30 – 49	14	8	22	4	8	3	11	4
50 – 59	21	12	33	6	7	2	9	4
60 – 79	155	50	205	36	88	11	99	40
80 – 89	115	42	157	27	49	11	60	24
90 – 99	116	41	157	27	54	12	66	27
Valid Cases	421	154	575	100	206	40	246	100
<b>Means</b>	<b>79.6</b>	<b>78.2</b>	<b>79.2</b>		<b>78.7</b>	<b>77.4</b>	<b>78.5</b>	
<b>SAT Verbal</b>								
200 – 399	0	3	3	1	0	1	1	1
400 – 499	29	20	49	14	15	3	18	18
500 – 599	88	99	187	53	37	17	54	53
600 – 699	52	46	98	28	17	10	27	26
700 – 800	12	5	17	5	1	1	2	2
Valid Cases	181	173	354	100	70	32	102	100
<b>Means</b>	<b>571</b>	<b>563</b>	<b>567</b>		<b>554</b>	<b>561</b>	<b>556</b>	
<b>SAT Math</b>								
200 – 399	0	1	1	0	0	1	1	1
400 – 499	15	5	20	6	6	1	7	7
500 – 599	63	69	132	37	24	10	34	33
600 – 699	95	81	176	50	38	15	53	52
700 – 800	8	17	25	7	2	5	7	7
Valid Cases	181	173	354	100	70	32	102	100
<b>Means</b>	<b>599</b>	<b>610</b>	<b>604</b>		<b>596</b>	<b>621</b>	<b>604</b>	
<b>ACT Composite</b>								
15 – 18	1	0	1	0	1	0	1	0
19 – 22	42	18	60	9	20	6	26	10
23 – 26	233	69	302	47	116	15	131	48
27 – 36	196	83	279	43	88	25	113	42
Valid Cases	472	170	642	100	225	46	271	100
<b>Means</b>	<b>26.1</b>	<b>26.1</b>	<b>26.1</b>		<b>25.9</b>	<b>26.2</b>	<b>26.0</b>	
<b>CCHE Index</b>								
101 – 114	121	84	205	27	63	18	81	28
115 – 160	359	182	541	73	164	41	205	72
Valid Cases	480	266	746	100	227	59	286	100
<b>Means</b>	<b>120</b>	<b>120</b>	<b>120</b>		<b>120</b>	<b>120</b>	<b>120</b>	

Institutional Research  
Freshman Profile  
Fall 2009

Engineering	Admitted N= 1065				Enrolled N=454			
	Res	Nonres	Total	Percent	Res	Nonres	Total	Percent
<b>High School GPA</b>								
2.5 – 2.999	1	0	1	0	0	0	0	0
3 – 3.599	158	99	257	25	89	31	120	27
3.6 – 4.0	358	200	558	54	196	51	247	56
4.001 – 10	132	89	221	21	52	23	75	17
Valid Cases	649	388	1037	100	337	105	442	100
<b>Means</b>	<b>3.79</b>	<b>3.83</b>	<b>3.81</b>		<b>3.76</b>	<b>3.81</b>	<b>3.77</b>	
<b>Percentile Rank</b>								
1 – 29	1	0	1	0	0	0	0	0
30 – 49	5	4	9	1	3	2	5	1
50 – 59	35	13	48	6	22	6	28	8
60 – 79	188	67	255	31	114	13	127	34
80 – 89	163	68	231	28	84	17	101	27
90 – 99	185	96	281	34	88	22	110	30
Valid Cases	577	248	825	100	311	60	371	100
<b>Means</b>	<b>81.6</b>	<b>83.0</b>	<b>82.0</b>		<b>80.2</b>	<b>80.9</b>	<b>80.4</b>	
<b>SAT Verbal</b>								
200 – 399	1	15	16	3	1	7	8	4
400 – 499	28	26	54	10	13	5	18	10
500 – 599	105	123	228	42	50	32	82	44
600 – 699	91	98	189	35	33	29	62	33
700 – 800	23	29	52	10	8	10	18	10
Valid Cases	248	291	539	100	105	83	188	100
<b>Means</b>	<b>586</b>	<b>578</b>	<b>582</b>		<b>575</b>	<b>573</b>	<b>574</b>	
<b>SAT Math</b>								
400 – 499	3	8	11	2	1	3	4	2
500 – 599	68	55	123	23	28	18	46	24
600 – 699	132	176	308	57	60	49	109	58
700 – 800	45	52	97	18	16	13	29	15
Valid Cases	248	291	539	100	105	83	188	100
<b>Means</b>	<b>636</b>	<b>640</b>	<b>638</b>		<b>632</b>	<b>633</b>	<b>632</b>	
<b>ACT Composite</b>								
1 – 14	0	1	1	0	0	1	1	0
19 – 22	33	10	43	5	19	2	21	5
23 – 26	268	77	345	39	142	24	166	42
27 – 36	330	169	499	56	166	43	209	53
Valid Cases	631	257	888	100	327	70	397	100
<b>Means</b>	<b>27.0</b>	<b>27.7</b>	<b>27.2</b>		<b>26.7</b>	<b>27.3</b>	<b>26.8</b>	
<b>CCHE Index</b>								
101 – 114	109	49	158	15	66	15	81	18
115 – 160	539	339	878	85	271	90	361	82
Valid Cases	648	388	1036	100	337	105	442	100
<b>Means</b>	<b>123</b>	<b>125</b>	<b>124</b>		<b>122</b>	<b>125</b>	<b>122</b>	

Institutional Research  
Freshman Profile  
Fall 2009

**Liberal Arts****Admitted N= 1785****Enrolled N=606**

	Res	Nonres	Total	Percent	Res	Nonres	Total	Percent
<b>High School GPA</b>								
2 – 2.499	0	1	1	0	0	0	0	0
2.5 – 2.999	49	55	104	6	27	8	35	6
3 – 3.599	484	278	762	43	226	41	267	44
3.6 – 4.0	448	232	680	38	195	34	229	38
4.001 – 10	155	68	223	13	62	13	75	12
Valid Cases	1136	634	1770	100	510	96	606	100
<b>Means</b>	<b>3.59</b>	<b>3.53</b>	<b>3.57</b>		<b>3.56</b>	<b>3.56</b>	<b>3.56</b>	
<b>Percentile Rank</b>								
1 – 29	13	5	18	1	8	3	11	2
30 – 49	93	36	129	10	53	6	59	11
50 – 59	112	35	147	11	45	7	52	10
60 – 79	348	127	475	35	157	18	175	34
80 – 89	197	60	257	19	98	14	112	22
90 – 99	225	92	317	24	89	19	108	21
Valid Cases	988	355	1343	100	450	67	517	100
<b>Means</b>	<b>73.5</b>	<b>73.9</b>	<b>73.6</b>		<b>72.2</b>	<b>72.8</b>	<b>72.3</b>	
<b>SAT Verbal</b>								
200 – 399	0	4	4	0	0	3	3	1
400 – 499	50	51	101	12	20	6	26	13
500 – 599	169	188	357	43	69	22	91	45
600 – 699	160	142	302	36	55	20	75	37
700 – 800	40	28	68	8	9	0	9	4
Valid Cases	419	413	832	100	153	51	204	100
<b>Means</b>	<b>591</b>	<b>579</b>	<b>585</b>		<b>582</b>	<b>563</b>	<b>577</b>	
<b>SAT Math</b>								
200 – 399	7	6	13	2	2	3	5	2
400 – 499	76	84	160	19	35	12	47	23
500 – 599	188	203	391	47	73	24	97	48
600 – 699	132	106	238	29	39	12	51	25
700 – 800	16	14	30	4	4	0	4	2
Valid Cases	419	413	832	100	153	51	204	100
<b>Means</b>	<b>561</b>	<b>555</b>	<b>558</b>		<b>549</b>	<b>533</b>	<b>545</b>	
<b>ACT Composite</b>								
15 – 18	29	6	35	2	10	0	10	2
19 – 22	256	71	327	22	138	15	153	27
23 – 26	447	172	619	41	207	33	240	42
27 – 36	371	142	513	34	140	22	162	29
Valid Cases	1103	391	1494	100	495	70	565	100
<b>Means</b>	<b>24.9</b>	<b>25.5</b>	<b>25.1</b>		<b>24.5</b>	<b>25.2</b>	<b>24.6</b>	
<b>CCHE Index</b>								
35 – 89	1	0	1	0	1	0	1	0
90 – 100	68	51	119	7	41	12	53	9
101 – 114	472	269	741	42	227	32	259	43
115 – 160	591	314	905	51	237	52	289	48
Valid Cases	1132	634	1766	100	506	96	602	100
<b>Means</b>	<b>116</b>	<b>115</b>	<b>115</b>		<b>114</b>	<b>114</b>	<b>114</b>	

Institutional Research  
Freshman Profile  
Fall 2009

Warner College of Natural Resources	Admitted N= 306				Enrolled N=104			
	Res	Nonres	Total	Percent	Res	Nonres	Total	Percent
<b>High School GPA</b>								
2.5 – 2.999	4	15	19	6	1	1	2	2
3 – 3.599	47	80	127	42	26	25	51	50
3.6 – 4.0	39	77	116	38	17	18	35	34
4.001 – 10	16	27	43	14	8	7	15	15
Valid Cases	106	199	305	100	52	51	103	100
<b>Means</b>	<b>3.58</b>	<b>3.58</b>	<b>3.58</b>		<b>3.55</b>	<b>3.59</b>	<b>3.57</b>	
<b>Percentile Rank</b>								
1 – 29	1	3	4	2	1	0	1	1
30 – 49	8	10	18	10	2	4	6	9
50 – 59	11	6	17	10	6	3	9	13
60 – 79	32	27	59	34	19	9	28	42
80 – 89	11	18	29	17	5	2	7	10
90 – 99	21	27	48	27	11	5	16	24
Valid Cases	84	91	175	100	44	23	67	100
<b>Means</b>	<b>72.7</b>	<b>75.6</b>	<b>74.2</b>		<b>72.8</b>	<b>70.9</b>	<b>72.1</b>	
<b>SAT Verbal</b>								
200 – 399	1	0	1	1	0	0	0	0
400 – 499	8	20	28	15	4	5	9	20
500 – 599	20	56	76	42	7	16	23	51
600 – 699	8	54	62	34	2	10	12	27
700 – 800	5	11	16	9	0	1	1	2
Valid Cases	42	141	183	100	13	32	45	100
<b>Means</b>	<b>567</b>	<b>587</b>	<b>582</b>		<b>534</b>	<b>570</b>	<b>560</b>	
<b>SAT Math</b>								
400 – 499	9	15	24	13	3	5	8	18
500 – 599	16	65	81	44	8	14	22	49
600 – 699	17	54	71	39	2	13	15	33
700 – 800	0	7	7	4	0	0	0	0
Valid Cases	42	141	183	100	13	32	45	100
<b>Means</b>	<b>567</b>	<b>582</b>	<b>578</b>		<b>544</b>	<b>573</b>	<b>565</b>	
<b>ACT Composite</b>								
15 – 18	3	2	5	2	1	0	1	1
19 – 22	28	22	50	23	15	7	22	27
23 – 26	40	40	80	37	22	12	34	41
27 – 36	30	50	80	37	11	14	25	30
Valid Cases	101	114	215	100	49	33	82	100
<b>Means</b>	<b>24.8</b>	<b>25.7</b>	<b>25.3</b>		<b>24.3</b>	<b>25.1</b>	<b>24.7</b>	
<b>CCHE Index</b>								
90 – 100	10	10	20	7	5	3	8	8
101 – 114	47	82	129	42	24	20	44	43
115 – 160	49	107	156	51	23	28	51	50
Valid Cases	106	199	305	100	52	51	103	100
<b>Means</b>	<b>115</b>	<b>117</b>	<b>116</b>		<b>113</b>	<b>116</b>	<b>115</b>	

Institutional Research  
Freshman Profile  
Fall 2009

**Natural Sciences**

**Admitted N= 1850**

**Enrolled N=691**

	Res	Nonres	Total	Percent	Res	Nonres	Total	Percent
<b>High School GPA</b>								
2 – 2.499	0	1	1	0	0	1	1	0
2.5 – 2.999	30	42	72	4	19	10	29	4
3 – 3.599	396	294	690	38	229	48	277	40
3.6 – 4.0	407	322	729	40	190	68	258	38
4.001 – 10	193	143	336	18	79	40	119	17
Valid Cases	1026	802	1828	100	517	167	684	100
<b>Means</b>	<b>3.65</b>	<b>3.65</b>	<b>3.65</b>		<b>3.59</b>	<b>3.73</b>	<b>3.63</b>	
<b>Percentile Rank</b>								
1 – 29	1	9	10	1	1	3	4	1
30 – 49	77	33	110	8	47	3	50	9
50 – 59	101	29	130	10	58	8	66	12
60 – 79	292	122	414	31	160	23	183	32
80 – 89	167	99	266	20	91	24	115	20
90 – 99	268	150	418	31	115	33	148	26
Valid Cases	906	442	1348	100	472	94	566	100
<b>Means</b>	<b>76.1</b>	<b>77.8</b>	<b>76.6</b>		<b>74.3</b>	<b>79.1</b>	<b>75.1</b>	
<b>SAT Verbal</b>								
200 – 399	3	10	13	1	1	4	5	2
400 – 499	64	80	144	16	28	12	40	15
500 – 599	160	220	380	43	77	39	116	43
600 – 699	116	179	295	33	42	47	89	33
700 – 800	24	37	61	7	10	8	18	7
Valid Cases	367	526	893	100	158	110	268	100
<b>Means</b>	<b>568</b>	<b>572</b>	<b>570</b>		<b>566</b>	<b>584</b>	<b>573</b>	
<b>SAT Math</b>								
200 – 399	5	6	11	1	3	1	4	1
400 – 499	62	73	135	15	31	16	47	18
500 – 599	148	193	341	38	62	31	93	35
600 – 699	126	217	343	38	53	53	106	40
700 – 800	26	37	63	7	9	9	18	7
Valid Cases	367	526	893	100	158	110	268	100
<b>Means</b>	<b>578</b>	<b>586</b>	<b>583</b>		<b>572</b>	<b>596</b>	<b>582</b>	
<b>ACT Composite</b>								
1 – 14	1	1	2	0	0	0	0	0
15 – 18	26	11	37	2	15	1	16	3
19 – 22	213	72	285	19	114	12	126	20
23 – 26	390	199	589	38	207	41	248	39
27 – 36	370	255	625	41	172	67	239	38
Valid Cases	1000	538	1538	100	508	121	629	100
<b>Means</b>	<b>25.2</b>	<b>26.2</b>	<b>25.5</b>		<b>24.9</b>	<b>26.8</b>	<b>25.3</b>	
<b>CCHE Index</b>								
35 – 89	1	0	1	0	1	0	1	0
90 – 100	63	51	114	6	35	10	45	7
101 – 114	374	263	637	35	216	37	253	37
115 – 160	588	486	1074	59	265	120	385	56
Valid Cases	1026	800	1826	100	517	167	684	100
<b>Means</b>	<b>117</b>	<b>118</b>	<b>117</b>		<b>115</b>	<b>120</b>	<b>117</b>	

Institutional Research  
Freshman Profile  
Fall 2009

**Veterinary Medicine +  
Biomedical Sci**

**Admitted N= 272**

**Enrolled N=139**

	Res	Nonres	Total	Percent	Res	Nonres	Total	Percent
<b>High School GPA</b>								
2.5 – 2.999	0	1	1	0	0	1	1	1
3 – 3.599	19	16	35	13	8	5	13	9
3.6 – 4.0	79	52	131	48	43	24	67	48
4.001 – 10	53	52	105	39	35	23	58	42
Valid Cases	151	121	272	100	86	53	139	100
<b>Means</b>	<b>3.96</b>	<b>3.98</b>	<b>3.97</b>		<b>3.99</b>	<b>3.98</b>	<b>3.99</b>	
<b>Percentile Rank</b>								
1 – 29	0	1	1	0	0	0	0	0
30 – 49	3	0	3	1	1	0	1	1
50 – 59	2	1	3	1	0	1	1	1
60 – 79	18	10	28	13	13	4	17	15
80 – 89	34	17	51	24	20	7	27	24
90 – 99	71	52	123	59	44	24	68	60
Valid Cases	128	81	209	100	78	36	114	100
<b>Means</b>	<b>87.4</b>	<b>89.3</b>	<b>88.2</b>		<b>88.1</b>	<b>89.5</b>	<b>88.6</b>	
<b>SAT Verbal</b>								
400 – 499	1	3	4	3	1	2	3	4
500 – 599	23	33	56	38	11	16	27	38
600 – 699	32	35	67	45	18	14	32	44
700 – 800	6	15	21	14	3	7	10	14
Valid Cases	62	86	148	100	33	39	72	100
<b>Means</b>	<b>611</b>	<b>616</b>	<b>614</b>		<b>618</b>	<b>610</b>	<b>614</b>	
<b>SAT Math</b>								
400 – 499	3	7	10	7	1	3	4	6
500 – 599	17	19	36	24	11	8	19	26
600 – 699	38	48	86	58	21	26	47	65
700 – 800	4	12	16	11	0	2	2	3
Valid Cases	62	86	148	100	33	39	72	100
<b>Means</b>	<b>616</b>	<b>628</b>	<b>623</b>		<b>608</b>	<b>621</b>	<b>615</b>	
<b>ACT Composite</b>								
19 – 22	10	1	11	5	5	1	6	5
23 – 26	52	19	71	30	28	9	37	29
27 – 36	85	67	152	65	52	32	84	66
Valid Cases	147	87	234	100	85	42	127	100
<b>Means</b>	<b>27.2</b>	<b>28.3</b>	<b>27.6</b>		<b>27.4</b>	<b>27.7</b>	<b>27.5</b>	
<b>CCHE Index</b>								
90 – 100	1	2	3	1	0	2	2	1
101 – 114	13	5	18	7	6	1	7	5
115 – 160	137	114	251	92	80	50	130	94
Valid Cases	151	121	272	100	86	53	139	100
<b>Means</b>	<b>125</b>	<b>127</b>	<b>126</b>		<b>126</b>	<b>127</b>	<b>126</b>	

Institutional Research  
Freshman Profile  
Fall 2009

Intra-University	Admitted N= 3470				Enrolled N=1261			
	Res	Nonres	Total	Percent	Res	Nonres	Total	Percent
<b>High School GPA</b>								
2 – 2.499	1	0	1	0	1	0	1	0
2.5 – 2.999	164	178	342	10	93	32	125	10
3 – 3.599	1212	630	1842	54	620	91	711	57
3.6 – 4.0	693	307	1000	29	278	58	336	27
4.001 – 10	145	83	228	7	63	11	74	6
Valid Cases	2215	1198	3413	100	1055	192	1247	100
<b>Means</b>	<b>3.45</b>	<b>3.38</b>	<b>3.43</b>		<b>3.41</b>	<b>3.39</b>	<b>3.40</b>	
<b>Percentile Rank</b>								
1 – 29	22	11	33	1	13	2	15	1
30 – 49	294	92	386	15	183	24	207	19
50 – 59	361	103	464	18	195	22	217	20
60 – 79	683	202	885	35	318	35	353	33
80 – 89	321	89	410	16	144	13	157	15
90 – 99	279	99	378	15	113	17	130	12
Valid Cases	1960	596	2556	100	966	113	1079	100
<b>Means</b>	<b>68.0</b>	<b>68.1</b>	<b>68.0</b>		<b>65.7</b>	<b>65.0</b>	<b>65.7</b>	
<b>SAT Verbal</b>								
200 – 399	15	14	29	2	7	2	9	2
400 – 499	186	183	369	26	84	24	108	30
500 – 599	285	385	670	48	112	55	167	46
600 – 699	128	160	288	20	42	24	66	18
700 – 800	29	25	54	4	9	3	12	3
Valid Cases	643	767	1410	100	254	108	362	100
<b>Means</b>	<b>539</b>	<b>544</b>	<b>541</b>		<b>530</b>	<b>543</b>	<b>534</b>	
<b>SAT Math</b>								
200 – 399	8	16	24	2	2	5	7	2
400 – 499	157	146	303	21	68	20	88	24
500 – 599	287	359	646	46	122	48	170	47
600 – 699	171	206	377	27	55	29	84	23
700 – 800	20	40	60	4	7	6	13	4
Valid Cases	643	767	1410	100	254	108	362	100
<b>Means</b>	<b>552</b>	<b>560</b>	<b>556</b>		<b>543</b>	<b>554</b>	<b>547</b>	
<b>ACT Composite</b>								
1 – 14	1	0	1	0	1	0	1	0
15 – 18	110	29	139	5	52	6	58	5
19 – 22	755	199	954	33	395	37	432	37
23 – 26	878	305	1183	41	424	62	486	41
27 – 36	412	206	618	21	164	31	195	17
Valid Cases	2156	739	2895	100	1036	136	1172	100
<b>Means</b>	<b>23.6</b>	<b>24.5</b>	<b>23.8</b>		<b>23.2</b>	<b>24.2</b>	<b>23.3</b>	
<b>CCHE Index</b>								
35 – 89	1	2	3	0	1	1	2	0
90 – 100	316	191	507	15	195	30	225	18
101 – 114	1217	625	1842	54	603	97	700	56
115 – 160	681	379	1060	31	256	63	319	26
Valid Cases	2215	1197	3412	100	1055	191	1246	100
<b>Means</b>	<b>111</b>	<b>111</b>	<b>111</b>		<b>109</b>	<b>111</b>	<b>109</b>	

**Fall 2008 Freshmen  
and  
Their Performance  
at CSU  
After One Year**

Number of New Freshmen by High School GPA & Rank,  
Test Scores, CCHE Index and CSU GPA  
CSU GPA after One Year for Freshmen Entering Fall 2008

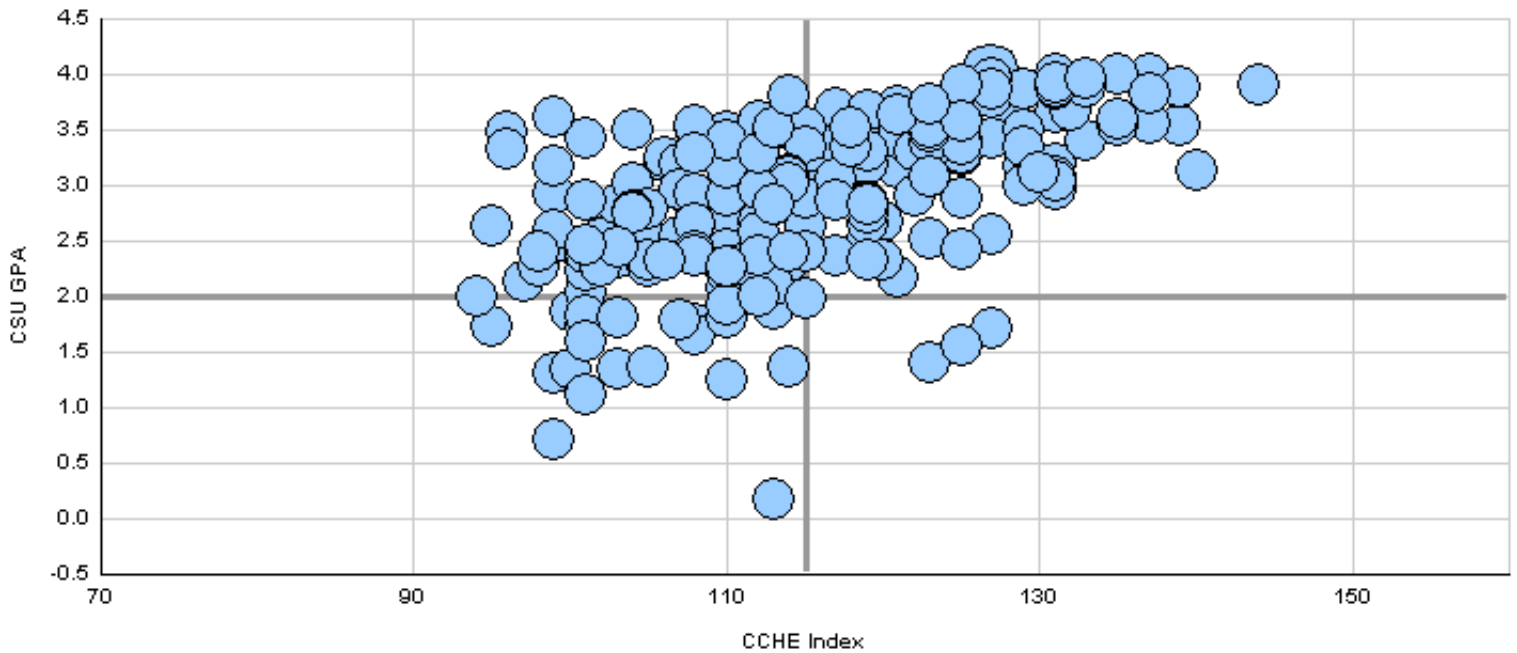
**Agricultural Sciences**

	CSU GPA				Total
	0.1 - 1.9	2.0 - 2.9	3.0 - 3.5	3.6 - 4.0	
High School GPA					
2.5 - 2.999	2	7	1		10
3 - 3.599	11	47	19	5	82
3.6 - 4.0	13	30	30	29	102
4.001 - 10		3	5	14	22
<b>Total</b>	<b>26</b>	<b>87</b>	<b>55</b>	<b>48</b>	<b>216</b>
Percentile Rank					
1 - 29	1	1			2
30 - 49	2	11	3		16
50 - 59	3	9	2	4	18
60 - 79	11	32	19	8	70
80 - 89	6	10	11	4	31
90 - 99	1	10	9	26	46
<b>Total</b>	<b>24</b>	<b>73</b>	<b>44</b>	<b>42</b>	<b>183</b>
SAT Verbal					
400 - 499	2	12	4	2	20
500 - 599	2	13	11	10	36
600 - 699		4	10	11	25
700 - 800		1	3	4	8
<b>Total</b>	<b>4</b>	<b>30</b>	<b>28</b>	<b>27</b>	<b>89</b>
SAT Math					
200 - 399			1		1
400 - 499	2	8	5		15
500 - 599	2	18	12	8	40
600 - 699		4	8	16	28
700 - 800			2	3	5
<b>Total</b>	<b>4</b>	<b>30</b>	<b>28</b>	<b>27</b>	<b>89</b>
ACT Composite					
1 - 14	1				1
15 - 18	2	2	2		6
19 - 22	13	37	14	4	68
23 - 26	8	30	21	10	69
27 - 36	2	9	15	23	49
<b>Total</b>	<b>26</b>	<b>78</b>	<b>52</b>	<b>37</b>	<b>193</b>
CCHE Index					
90 - 100	5	8	3	1	17
101 - 114	17	56	16	5	94
115 - 160	4	23	36	42	105
<b>Total</b>	<b>26</b>	<b>87</b>	<b>55</b>	<b>48</b>	<b>216</b>

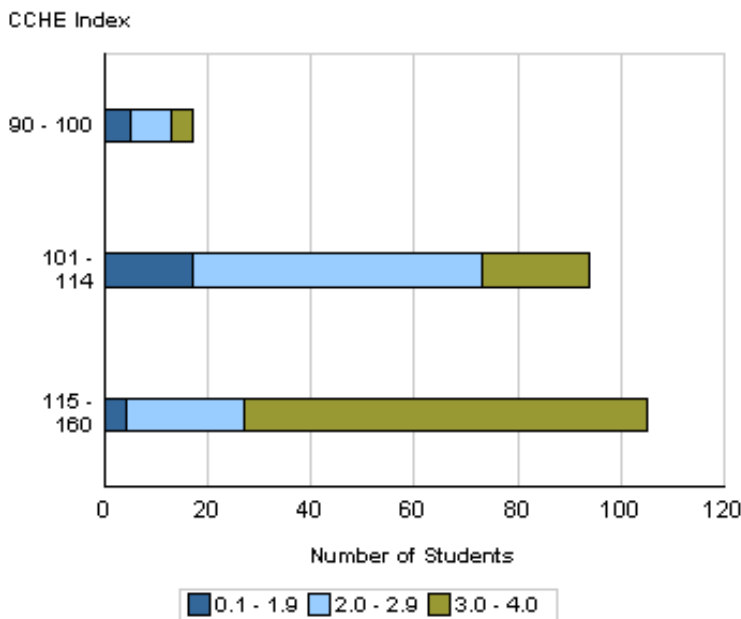
Number of New Freshmen by High School GPA & Rank,  
 Test Scores, CCHE Index and CSU GPA  
 CSU GPA after One Year for Freshmen Entering Fall 2008

**Agricultural Sciences**

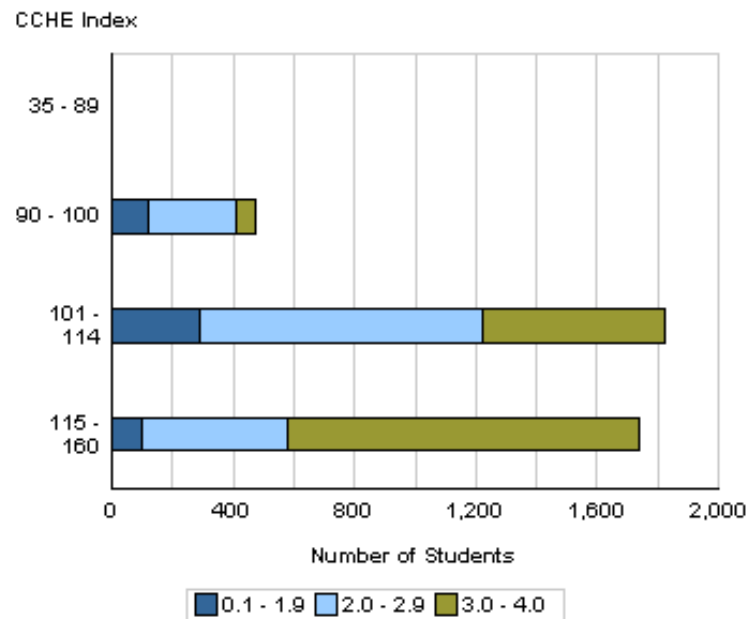
**Fall 2008 - Spring 2009  
 First Year CSU GPA by CCHE Index**



**Your College**



**All CSU Freshmen**



Number of New Freshmen by High School GPA & Rank,  
Test Scores, CCHE Index and CSU GPA  
CSU GPA after One Year for Freshmen Entering Fall 2008

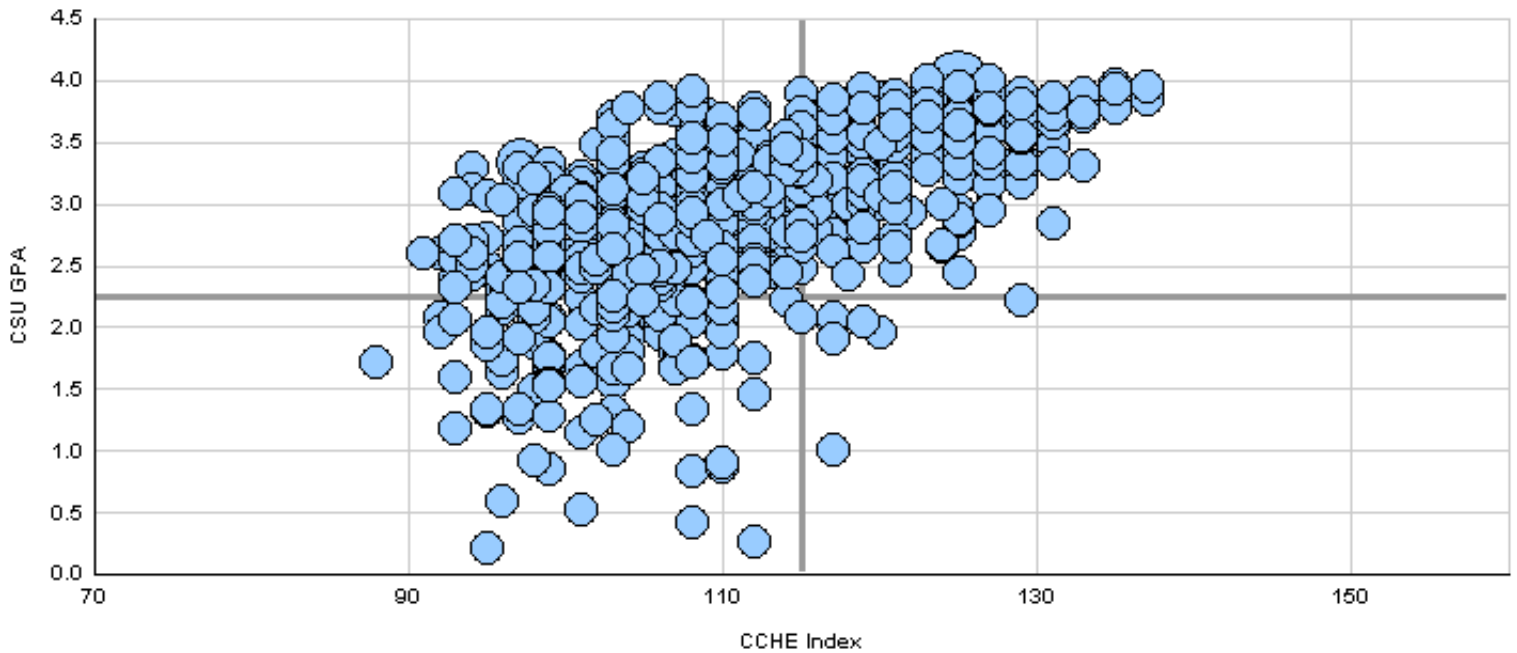
**Applied Human Sciences**

	CSU GPA				Total
	0.1 - 1.9	2.0 - 2.9	3.0 - 3.5	3.6 - 4.0	
High School GPA					
2.5 - 2.999	9	18	5		32
3 - 3.599	53	147	70	21	291
3.6 - 4.0	9	70	80	64	223
4.001 - 10		5	9	21	35
<b>Total</b>	<b>71</b>	<b>240</b>	<b>164</b>	<b>106</b>	<b>581</b>
Percentile Rank					
1 - 29	2	4	1		7
30 - 49	16	29	15	3	63
50 - 59	15	39	14	5	73
60 - 79	22	95	62	16	195
80 - 89	5	35	36	21	97
90 - 99		12	19	50	81
<b>Total</b>	<b>60</b>	<b>214</b>	<b>147</b>	<b>95</b>	<b>516</b>
SAT Verbal					
200 - 399	1	1	1		3
400 - 499	9	25	17	6	57
500 - 599	9	33	28	20	90
600 - 699		5	11	15	31
700 - 800				1	1
<b>Total</b>	<b>19</b>	<b>64</b>	<b>57</b>	<b>42</b>	<b>182</b>
SAT Math					
200 - 399	1		1		2
400 - 499	5	18	14	5	42
500 - 599	12	35	28	15	90
600 - 699	1	11	14	19	45
700 - 800				3	3
<b>Total</b>	<b>19</b>	<b>64</b>	<b>57</b>	<b>42</b>	<b>182</b>
ACT Composite					
15 - 18	7	20	4		31
19 - 22	35	115	52	21	223
23 - 26	23	76	77	45	221
27 - 36	2	13	18	34	67
<b>Total</b>	<b>67</b>	<b>224</b>	<b>151</b>	<b>100</b>	<b>542</b>
CCHE Index					
35 - 89	1				1
90 - 100	28	56	17		101
101 - 114	39	149	82	29	299
115 - 160	3	34	65	77	179
<b>Total</b>	<b>71</b>	<b>239</b>	<b>164</b>	<b>106</b>	<b>580</b>

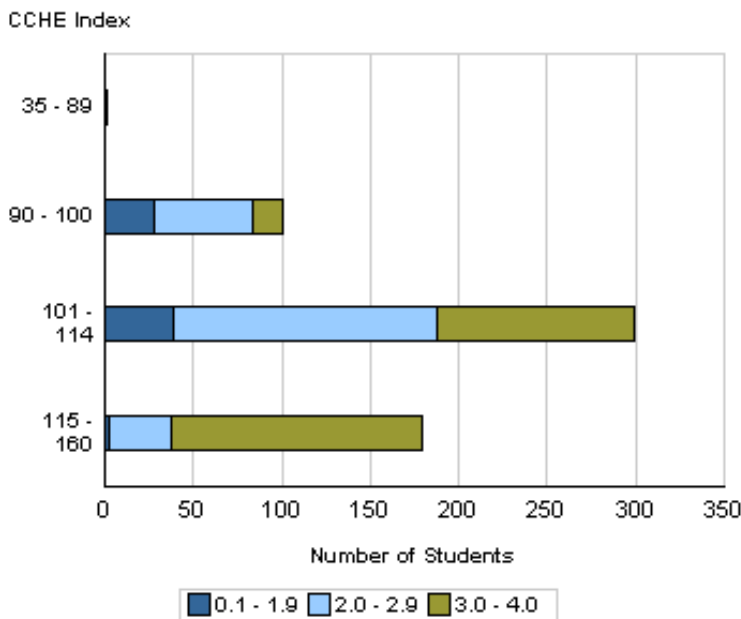
Number of New Freshmen by High School GPA & Rank,  
 Test Scores, CCHE Index and CSU GPA  
 CSU GPA after One Year for Freshmen Entering Fall 2008

**Applied Human Sciences**

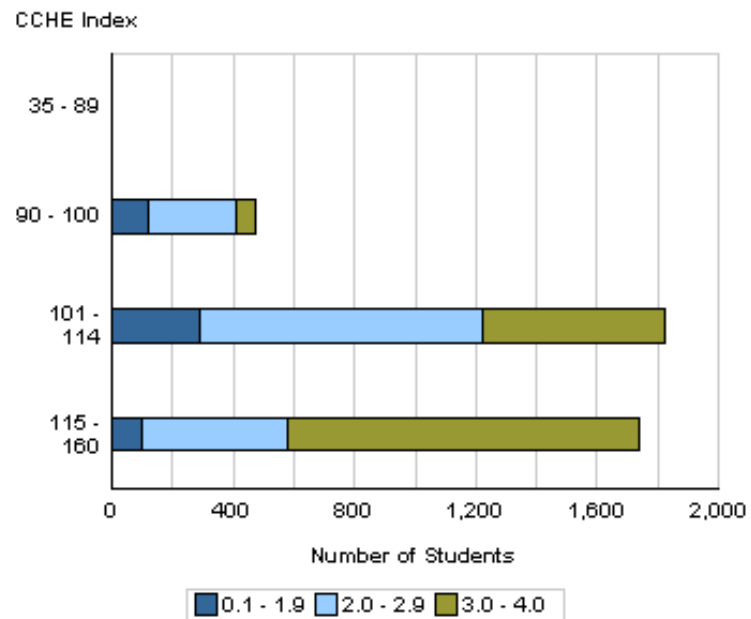
**Fall 2008 - Spring 2009  
 First Year CSU GPA by CCHE Index**



**Your College**



**All CSU Freshmen**



Number of New Freshmen by High School GPA & Rank,  
Test Scores, CCHE Index and CSU GPA  
CSU GPA after One Year for Freshmen Entering Fall 2008

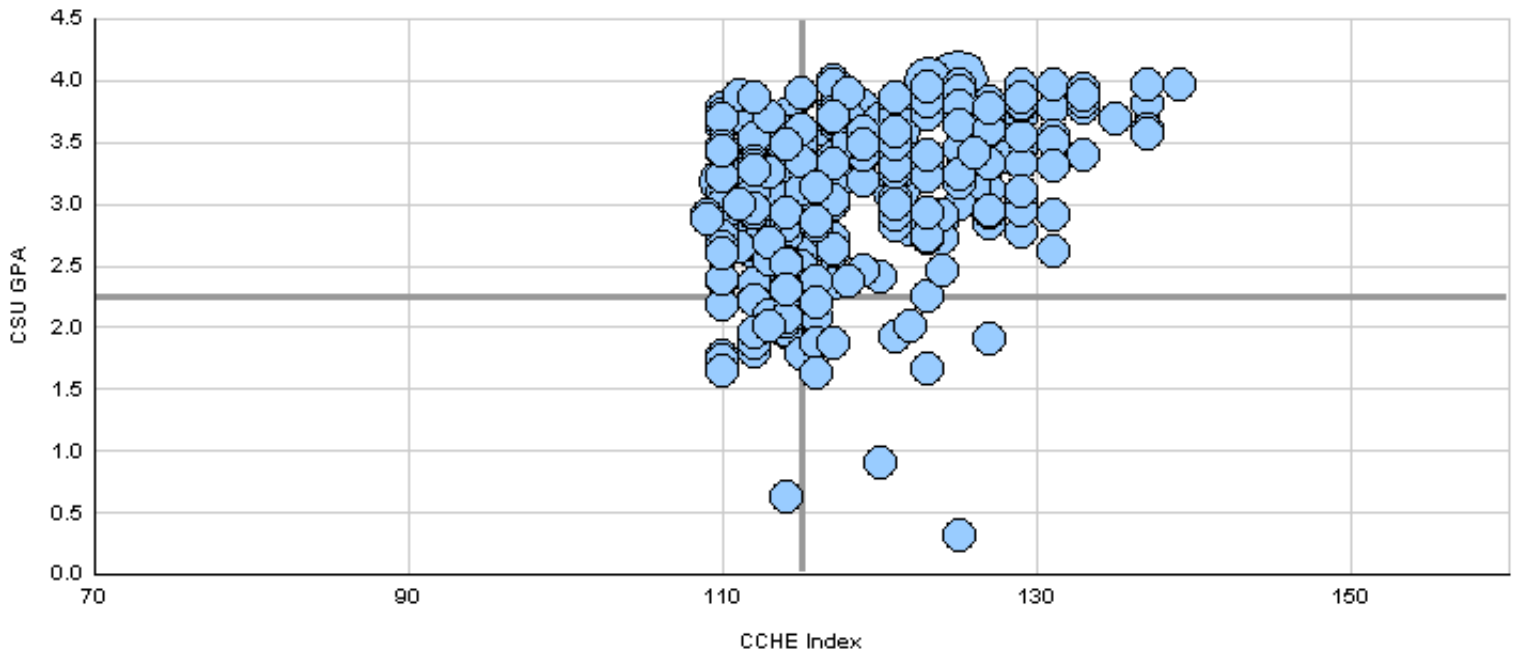
**Business**

	CSU GPA				Total
	0.1 - 1.9	2.0 - 2.9	3.0 - 3.5	3.6 - 4.0	
High School GPA					
2.5 - 2.999		1	1		2
3 - 3.599	13	48	39	7	107
3.6 - 4.0	6	47	59	59	171
4.001 - 10		3	7	34	44
<b>Total</b>	<b>19</b>	<b>99</b>	<b>106</b>	<b>100</b>	<b>324</b>
Percentile Rank					
1 - 29	1	1	1		3
30 - 49	2	5	6	1	14
50 - 59	3	5	9	2	19
60 - 79	6	45	37	14	102
80 - 89	3	24	30	28	85
90 - 99	2	8	11	45	66
<b>Total</b>	<b>17</b>	<b>88</b>	<b>94</b>	<b>90</b>	<b>289</b>
SAT Verbal					
200 - 399		1			1
400 - 499		6	9	6	21
500 - 599	2	16	20	16	54
600 - 699	3	7	13	15	38
700 - 800	1			1	2
<b>Total</b>	<b>6</b>	<b>30</b>	<b>42</b>	<b>38</b>	<b>116</b>
SAT Math					
400 - 499	1	2	5	2	10
500 - 599	1	13	19	23	56
600 - 699	2	15	16	11	44
700 - 800	2		2	2	6
<b>Total</b>	<b>6</b>	<b>30</b>	<b>42</b>	<b>38</b>	<b>116</b>
ACT Composite					
19 - 22	2	10	12	12	36
23 - 26	12	63	63	45	183
27 - 36	5	22	27	39	93
<b>Total</b>	<b>19</b>	<b>95</b>	<b>102</b>	<b>96</b>	<b>312</b>
CCHE Index					
101 - 114	10	59	43	17	129
115 - 160	9	40	63	83	195
<b>Total</b>	<b>19</b>	<b>99</b>	<b>106</b>	<b>100</b>	<b>324</b>

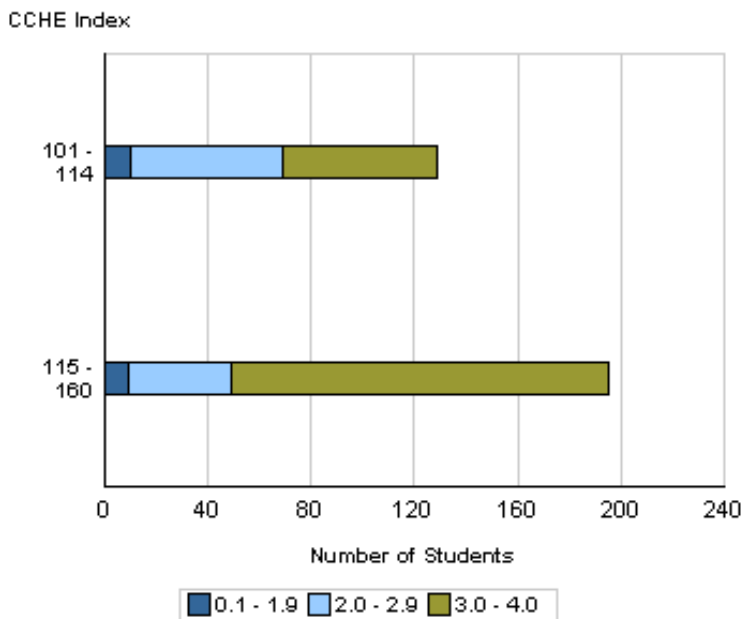
Number of New Freshmen by High School GPA & Rank,  
 Test Scores, CCHE Index and CSU GPA  
 CSU GPA after One Year for Freshmen Entering Fall 2008

**Business**

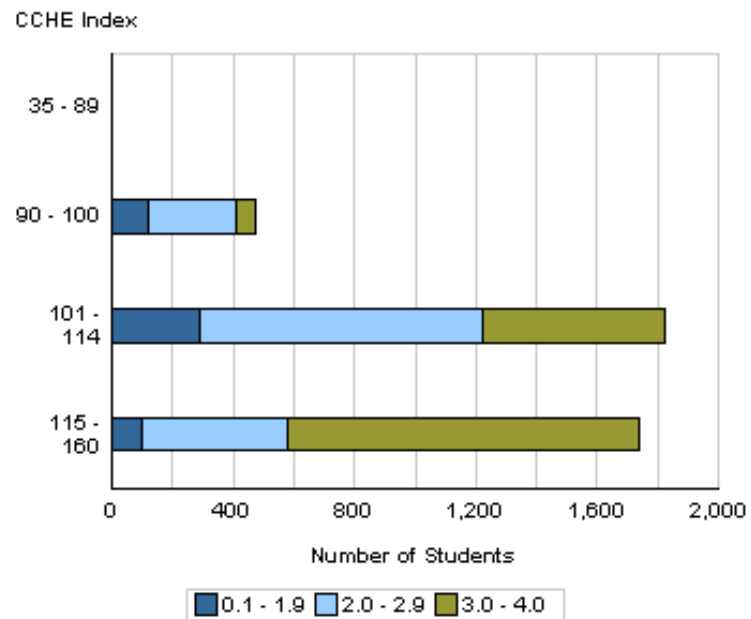
**Fall 2008 - Spring 2009  
 First Year CSU GPA by CCHE Index**



**Your College**



**All CSU Freshmen**



Number of New Freshmen by High School GPA & Rank,  
Test Scores, CCHE Index and CSU GPA  
CSU GPA after One Year for Freshmen Entering Fall 2008

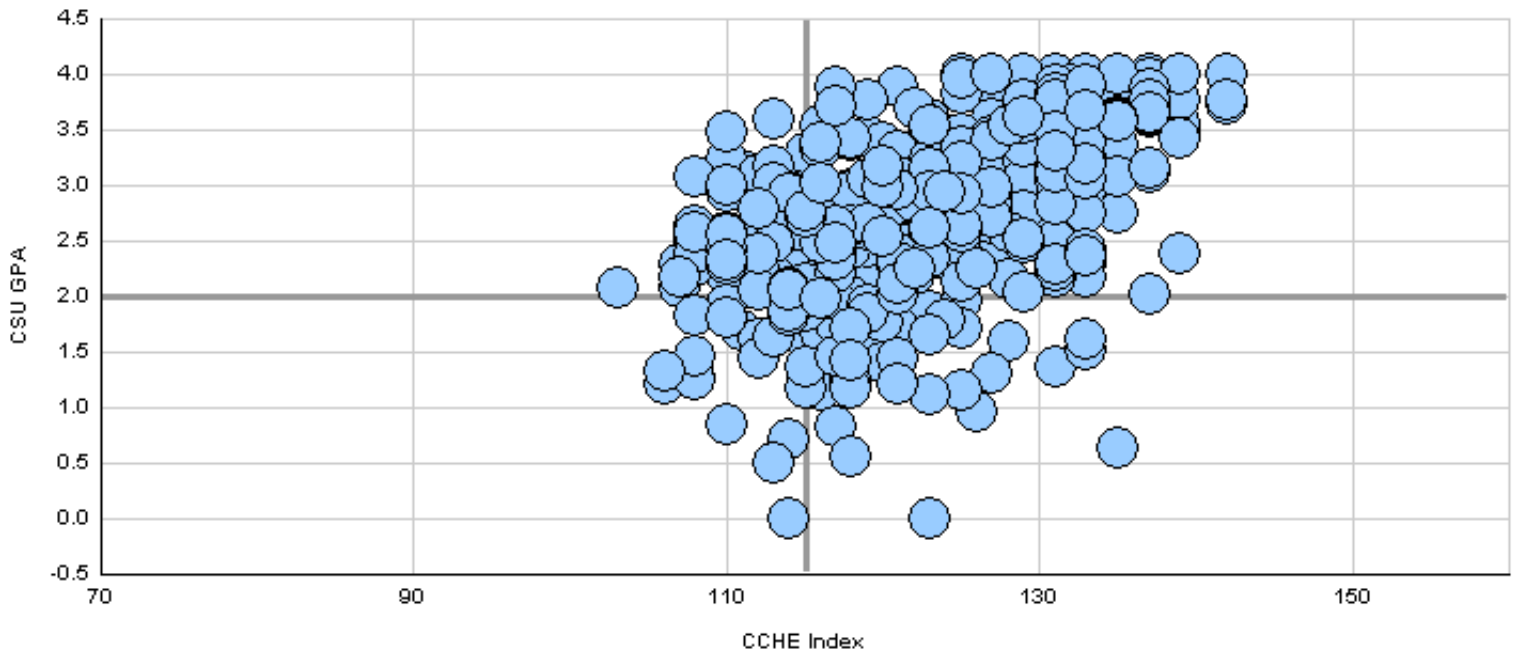
**Engineering**

	CSU GPA				Total
	0.1 - 1.9	2.0 - 2.9	3.0 - 3.5	3.6 - 4.0	
<b>High School GPA</b>					
3 - 3.599	35	46	11	7	99
3.6 - 4.0	28	105	47	27	207
4.001 - 10	2	22	21	31	76
<b>Total</b>	<b>65</b>	<b>173</b>	<b>79</b>	<b>65</b>	<b>382</b>
<b>Percentile Rank</b>					
1 - 29	1				1
30 - 49	2	1	1		4
50 - 59	5	8	3	1	17
60 - 79	29	65	11	9	114
80 - 89	15	39	24	7	85
90 - 99	8	44	31	41	124
<b>Total</b>	<b>60</b>	<b>157</b>	<b>70</b>	<b>58</b>	<b>345</b>
<b>SAT Verbal</b>					
200 - 399		1	1		2
400 - 499	7	14	1	2	24
500 - 599	11	25	20	14	70
600 - 699	4	26	18	19	67
700 - 800	4	2	1	5	12
<b>Total</b>	<b>26</b>	<b>68</b>	<b>41</b>	<b>40</b>	<b>175</b>
<b>SAT Math</b>					
400 - 499	1	2			3
500 - 599	10	21	10	1	42
600 - 699	11	38	25	23	97
700 - 800	4	7	6	16	33
<b>Total</b>	<b>26</b>	<b>68</b>	<b>41</b>	<b>40</b>	<b>175</b>
<b>ACT Composite</b>					
19 - 22	5	22	4	4	35
23 - 26	32	85	22	6	145
27 - 36	20	60	49	46	175
<b>Total</b>	<b>57</b>	<b>167</b>	<b>75</b>	<b>56</b>	<b>355</b>
<b>CCHE Index</b>					
101 - 114	19	45	9	1	74
115 - 160	46	128	70	64	308
<b>Total</b>	<b>65</b>	<b>173</b>	<b>79</b>	<b>65</b>	<b>382</b>

Number of New Freshmen by High School GPA & Rank,  
Test Scores, CCHE Index and CSU GPA  
CSU GPA after One Year for Freshmen Entering Fall 2008

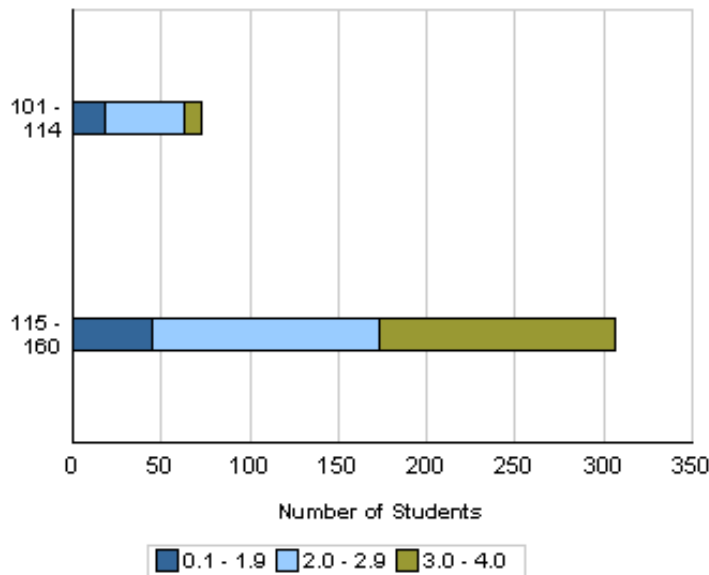
Engineering

Fall 2008 - Spring 2009  
First Year CSU GPA by CCHE Index



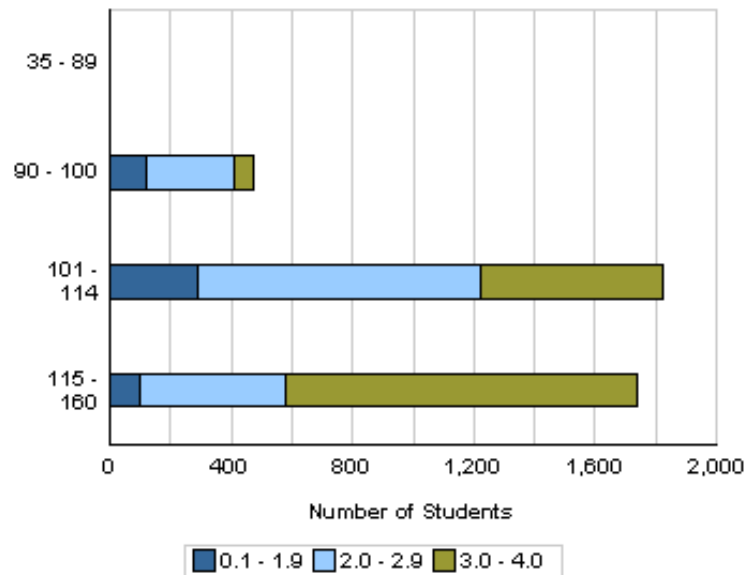
Your College

CCHE Index



All CSU Freshmen

CCHE Index



Number of New Freshmen by High School GPA & Rank,  
Test Scores, CCHE Index and CSU GPA  
CSU GPA after One Year for Freshmen Entering Fall 2008

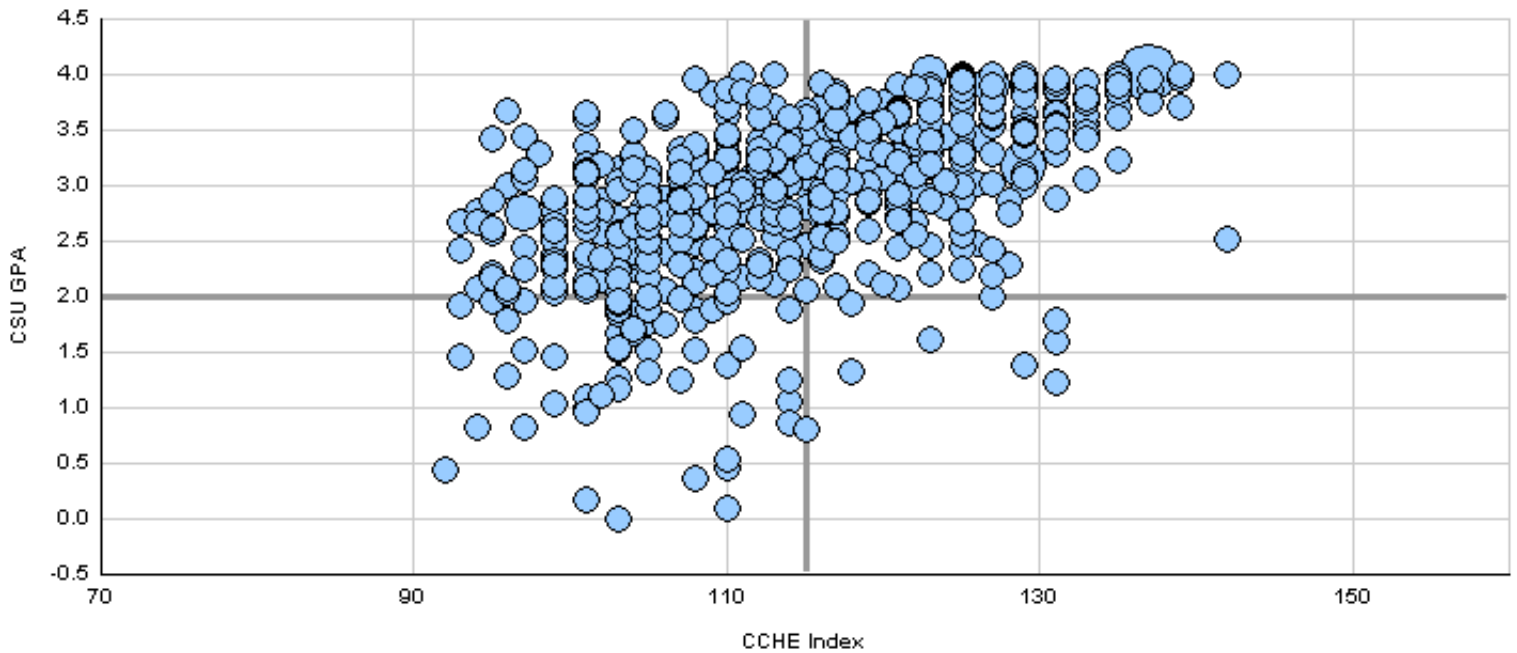
**Liberal Arts**

	CSU GPA				Total
	0.1 - 1.9	2.0 - 2.9	3.0 - 3.5	3.6 - 4.0	
High School GPA					
2.5 - 2.999	10	22	2	2	36
3 - 3.599	41	136	82	16	275
3.6 - 4.0	10	54	68	68	200
4.001 - 10		6	14	43	63
<b>Total</b>	<b>61</b>	<b>218</b>	<b>166</b>	<b>129</b>	<b>574</b>
Percentile Rank					
1 - 29		1			1
30 - 49	11	40	9	5	65
50 - 59	15	36	20	2	73
60 - 79	17	71	59	24	171
80 - 89	6	28	39	32	105
90 - 99	3	11	21	50	85
<b>Total</b>	<b>52</b>	<b>187</b>	<b>148</b>	<b>113</b>	<b>500</b>
SAT Verbal					
200 - 399	1	2	1		4
400 - 499	2	13	11	2	28
500 - 599	8	39	30	19	96
600 - 699	7	14	23	31	75
700 - 800		4	5	15	24
<b>Total</b>	<b>18</b>	<b>72</b>	<b>70</b>	<b>67</b>	<b>227</b>
SAT Math					
200 - 399		4			4
400 - 499	6	19	17	6	48
500 - 599	10	38	39	30	117
600 - 699	2	10	10	28	50
700 - 800		1	4	3	8
<b>Total</b>	<b>18</b>	<b>72</b>	<b>70</b>	<b>67</b>	<b>227</b>
ACT Composite					
15 - 18	4	8	3		15
19 - 22	15	63	31	12	121
23 - 26	28	97	77	42	244
27 - 36	9	32	47	64	152
<b>Total</b>	<b>56</b>	<b>200</b>	<b>158</b>	<b>118</b>	<b>532</b>
CCHE Index					
90 - 100	12	34	6	1	53
101 - 114	41	127	78	18	264
115 - 160	8	57	82	110	257
<b>Total</b>	<b>61</b>	<b>218</b>	<b>166</b>	<b>129</b>	<b>574</b>

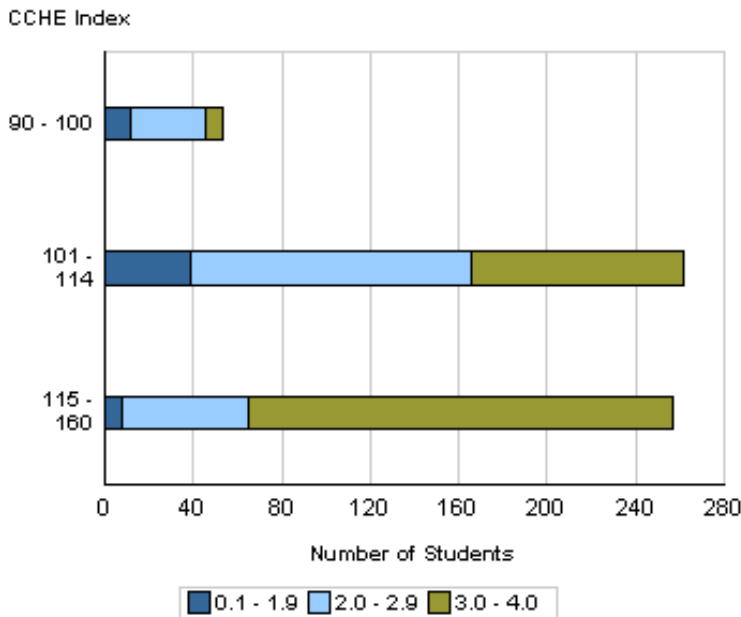
Number of New Freshmen by High School GPA & Rank,  
Test Scores, CCHE Index and CSU GPA  
CSU GPA after One Year for Freshmen Entering Fall 2008

Liberal Arts

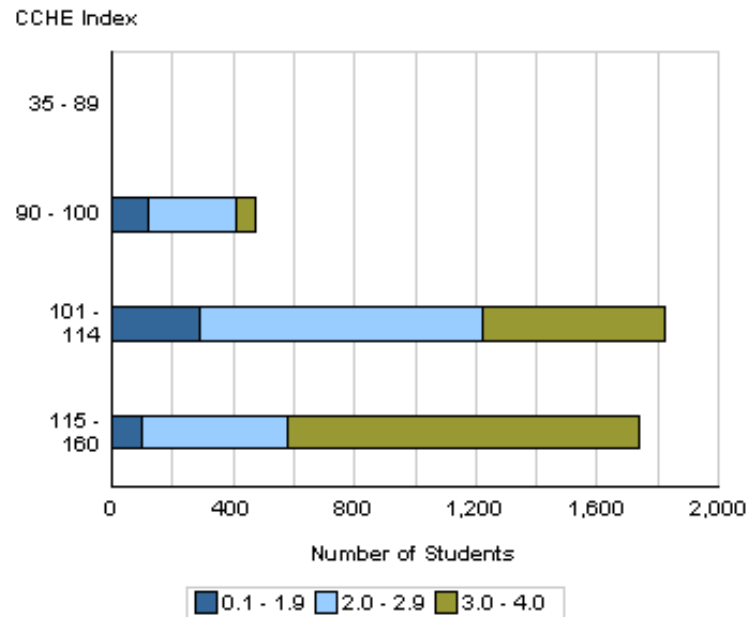
Fall 2008 - Spring 2009  
First Year CSU GPA by CCHE Index



Your College



All CSU Freshmen



Number of New Freshmen by High School GPA & Rank,  
Test Scores, CCHE Index and CSU GPA  
CSU GPA after One Year for Freshmen Entering Fall 2008

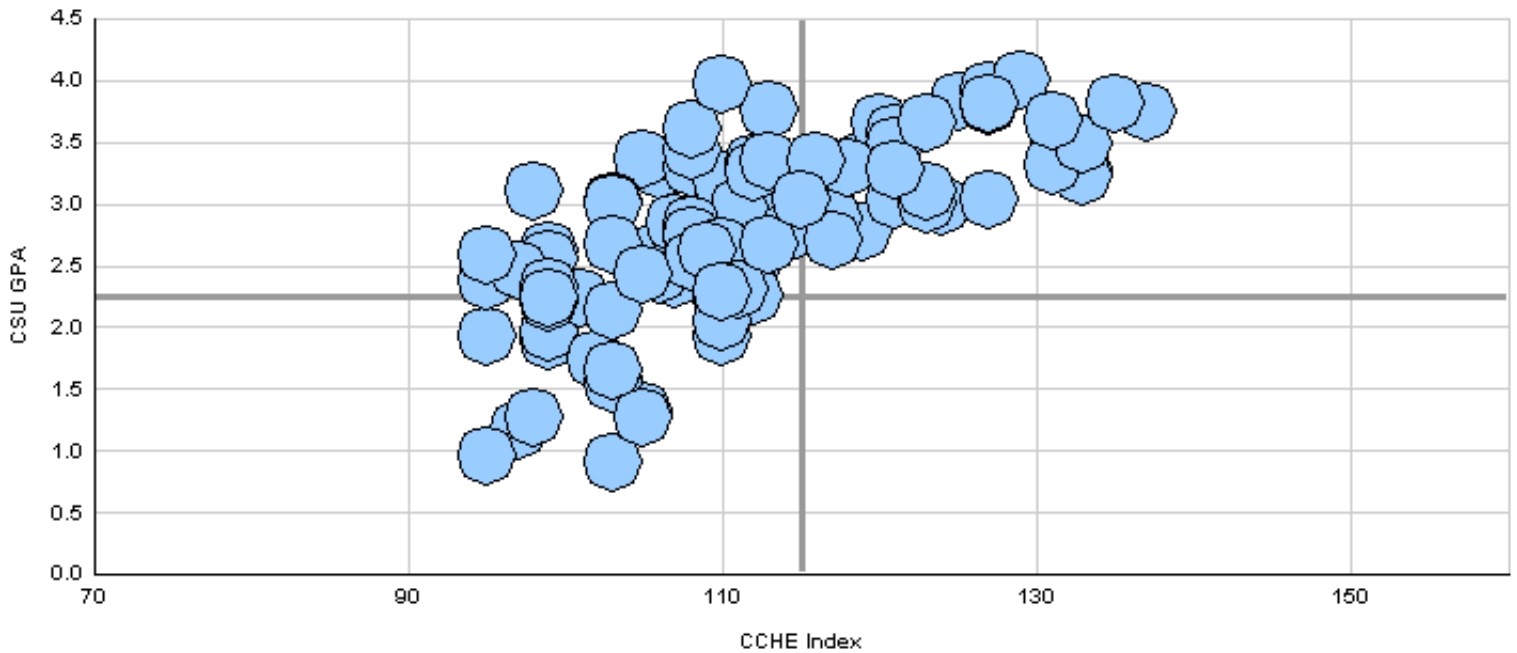
**Warner College of Natural Resources**

	CSU GPA				Total
	0.1 - 1.9	2.0 - 2.9	3.0 - 3.5	3.6 - 4.0	
High School GPA					
2.5 - 2.999	3	1			4
3 - 3.599	11	26	9	2	48
3.6 - 4.0		13	14	9	36
4.001 - 10			3	3	6
<b>Total</b>	<b>14</b>	<b>40</b>	<b>26</b>	<b>14</b>	<b>94</b>
Percentile Rank					
30 - 49	3	3	1		7
50 - 59	5	6	2		13
60 - 79	3	21	8	3	35
80 - 89	1	4	5	2	12
90 - 99		1	6	5	12
<b>Total</b>	<b>12</b>	<b>35</b>	<b>22</b>	<b>10</b>	<b>79</b>
SAT Verbal					
200 - 399		1			1
400 - 499	2	6	1		9
500 - 599	1	5	3	4	13
600 - 699			5	3	8
<b>Total</b>	<b>3</b>	<b>12</b>	<b>9</b>	<b>7</b>	<b>31</b>
SAT Math					
400 - 499	3	4	1	1	9
500 - 599		7	5	1	13
600 - 699		1	3	5	9
<b>Total</b>	<b>3</b>	<b>12</b>	<b>9</b>	<b>7</b>	<b>31</b>
ACT Composite					
15 - 18	1				1
19 - 22	8	20	7	1	36
23 - 26	5	16	11	4	36
27 - 36		3	6	8	17
<b>Total</b>	<b>14</b>	<b>39</b>	<b>24</b>	<b>13</b>	<b>90</b>
CCHE Index					
90 - 100	6	9	1		16
101 - 114	8	27	11	3	49
115 - 160		4	14	11	29
<b>Total</b>	<b>14</b>	<b>40</b>	<b>26</b>	<b>14</b>	<b>94</b>

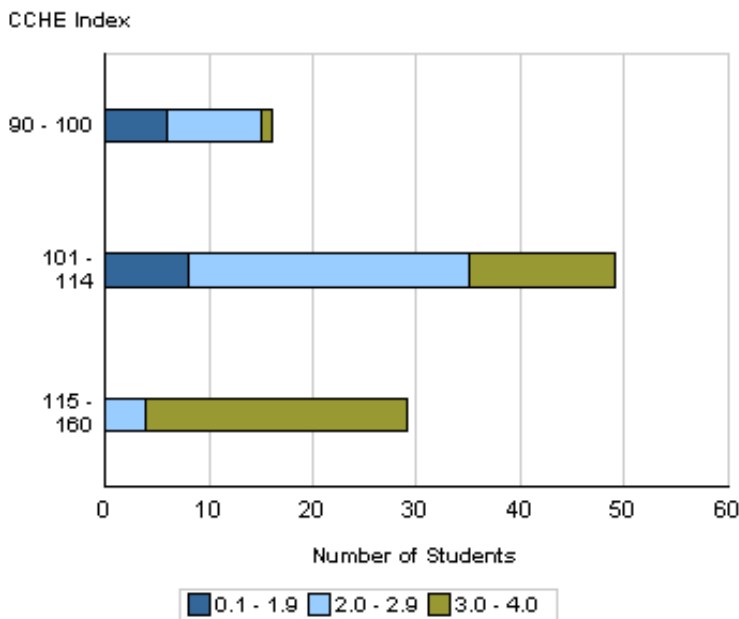
Number of New Freshmen by High School GPA & Rank,  
 Test Scores, CCHE Index and CSU GPA  
 CSU GPA after One Year for Freshmen Entering Fall 2008

**Warner College of Natural Resources**

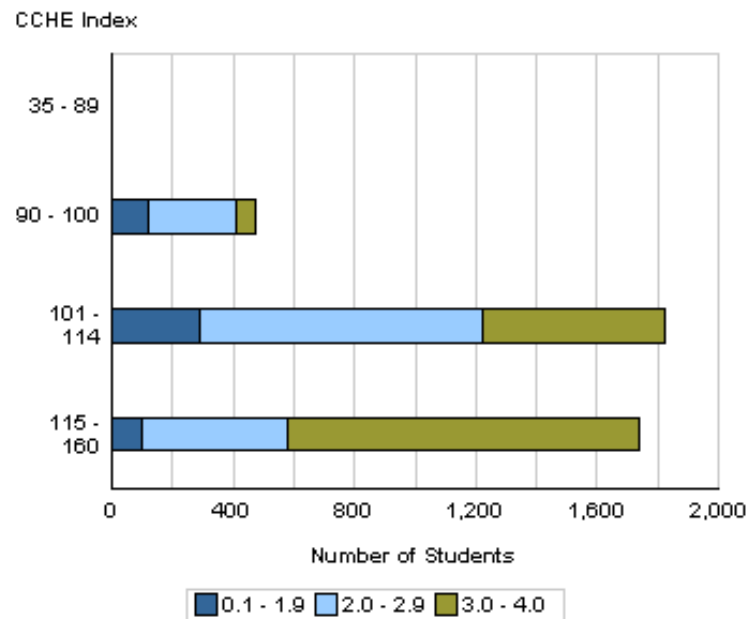
**Fall 2008 - Spring 2009  
 First Year CSU GPA by CCHE Index**



**Your College**



**All CSU Freshmen**



Number of New Freshmen by High School GPA & Rank,  
Test Scores, CCHE Index and CSU GPA  
CSU GPA after One Year for Freshmen Entering Fall 2008

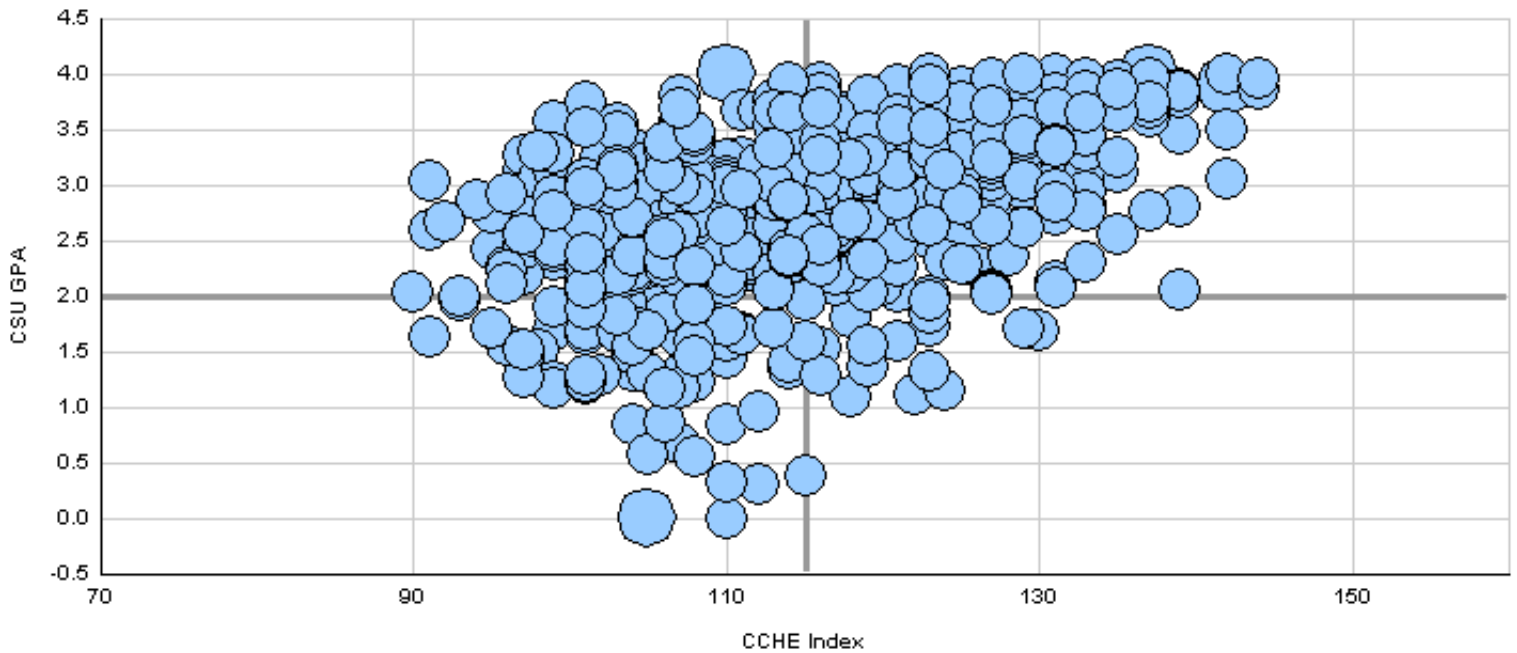
**Natural Sciences**

	CSU GPA				Total
	0.1 - 1.9	2.0 - 2.9	3.0 - 3.5	3.6 - 4.0	
High School GPA					
2.5 - 2.999	13	14	5	3	35
3 - 3.599	52	132	42	12	238
3.6 - 4.0	14	103	67	65	249
4.001 - 10	1	17	18	47	83
<b>Total</b>	<b>80</b>	<b>266</b>	<b>132</b>	<b>127</b>	<b>605</b>
Percentile Rank					
1 - 29	3				3
30 - 49	10	17	12	2	41
50 - 59	9	30	6	3	48
60 - 79	27	99	28	16	170
80 - 89	16	54	36	24	130
90 - 99	4	28	32	65	129
<b>Total</b>	<b>69</b>	<b>228</b>	<b>114</b>	<b>110</b>	<b>521</b>
SAT Verbal					
200 - 399	1	2	1	1	5
400 - 499	9	27	10	5	51
500 - 599	14	51	30	21	116
600 - 699	6	19	18	38	81
700 - 800	1	1	2	5	9
<b>Total</b>	<b>31</b>	<b>100</b>	<b>61</b>	<b>70</b>	<b>262</b>
SAT Math					
200 - 399	1	2	2		5
400 - 499	7	26	7	6	46
500 - 599	10	35	32	25	102
600 - 699	12	34	19	27	92
700 - 800	1	3	1	12	17
<b>Total</b>	<b>31</b>	<b>100</b>	<b>61</b>	<b>70</b>	<b>262</b>
ACT Composite					
1 - 14		1	1		2
15 - 18	6	9	1		16
19 - 22	22	76	21	10	129
23 - 26	30	103	49	33	215
27 - 36	13	55	35	71	174
<b>Total</b>	<b>71</b>	<b>244</b>	<b>107</b>	<b>114</b>	<b>536</b>
CCHE Index					
90 - 100	12	25	7	1	45
101 - 114	50	128	49	18	245
115 - 160	18	113	76	108	315
<b>Total</b>	<b>80</b>	<b>266</b>	<b>132</b>	<b>127</b>	<b>605</b>

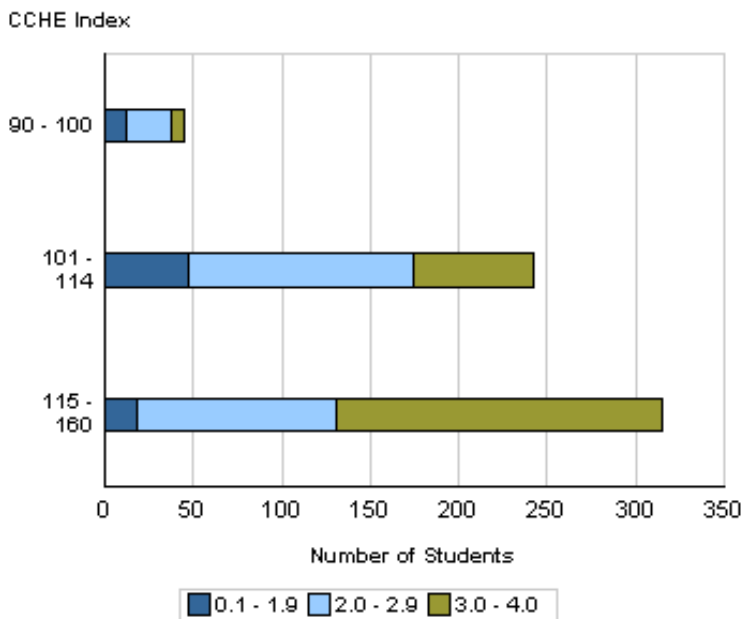
Number of New Freshmen by High School GPA & Rank,  
Test Scores, CCHE Index and CSU GPA  
CSU GPA after One Year for Freshmen Entering Fall 2008

**Natural Sciences**

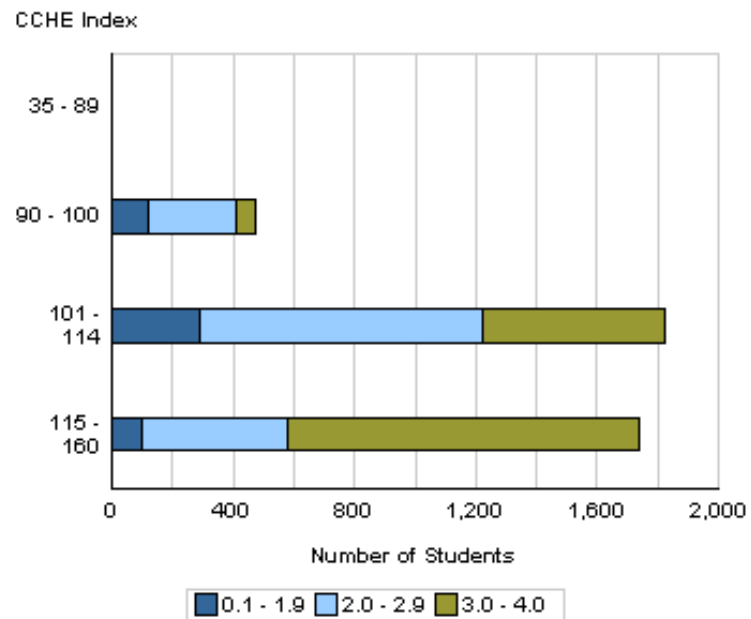
**Fall 2008 - Spring 2009  
First Year CSU GPA by CCHE Index**



**Your College**



**All CSU Freshmen**



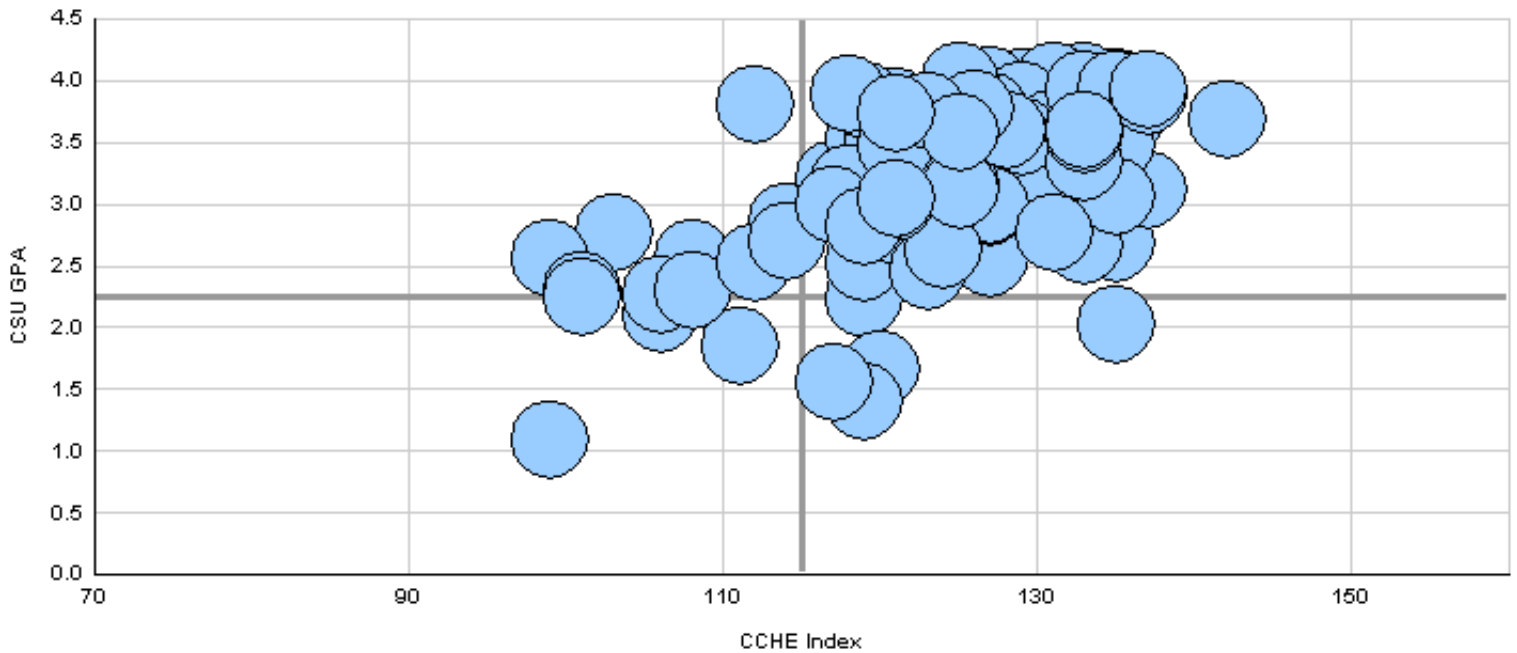
Number of New Freshmen by High School GPA & Rank,  
Test Scores, CCHE Index and CSU GPA  
CSU GPA after One Year for Freshmen Entering Fall 2008

Veterinary Medicine + Biomedical Sci	CSU GPA				Total
	0.1 - 1.9	2.0 - 2.9	3.0 - 3.5	3.6 - 4.0	
High School GPA					
2.5 - 2.999		2			2
3 - 3.599	3	8	2	2	15
3.6 - 4.0	2	15	32	22	71
4.001 - 10		1	8	25	34
<b>Total</b>	<b>5</b>	<b>26</b>	<b>42</b>	<b>49</b>	<b>122</b>
Percentile Rank					
30 - 49	1	1			2
60 - 79	3	7	3	4	17
80 - 89	1	6	9	7	23
90 - 99		7	22	31	60
<b>Total</b>	<b>5</b>	<b>21</b>	<b>34</b>	<b>42</b>	<b>102</b>
SAT Verbal					
400 - 499			1		1
500 - 599		6	7	11	24
600 - 699	2	3	10	17	32
700 - 800			3	5	8
<b>Total</b>	<b>2</b>	<b>9</b>	<b>21</b>	<b>33</b>	<b>65</b>
SAT Math					
400 - 499		1			1
500 - 599	2	4	9	6	21
600 - 699		4	10	23	37
700 - 800			2	4	6
<b>Total</b>	<b>2</b>	<b>9</b>	<b>21</b>	<b>33</b>	<b>65</b>
ACT Composite					
19 - 22	1	7	1	2	11
23 - 26	1	9	19	10	39
27 - 36	2	8	19	29	58
<b>Total</b>	<b>4</b>	<b>24</b>	<b>39</b>	<b>41</b>	<b>108</b>
CCHE Index					
90 - 100	1	1			2
101 - 114	1	10		1	12
115 - 160	3	15	42	48	108
<b>Total</b>	<b>5</b>	<b>26</b>	<b>42</b>	<b>49</b>	<b>122</b>

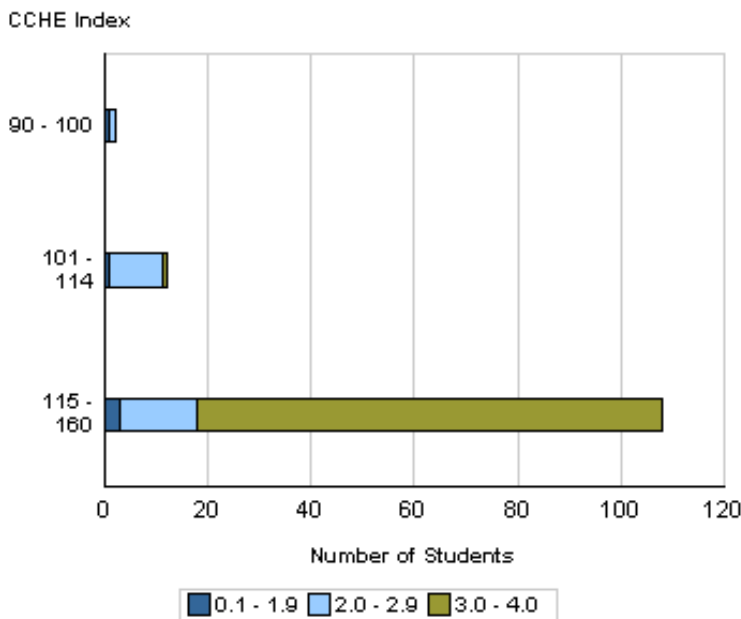
Number of New Freshmen by High School GPA & Rank,  
 Test Scores, CCHE Index and CSU GPA  
 CSU GPA after One Year for Freshmen Entering Fall 2008

**Veterinary Medicine + Biomedical Sci**

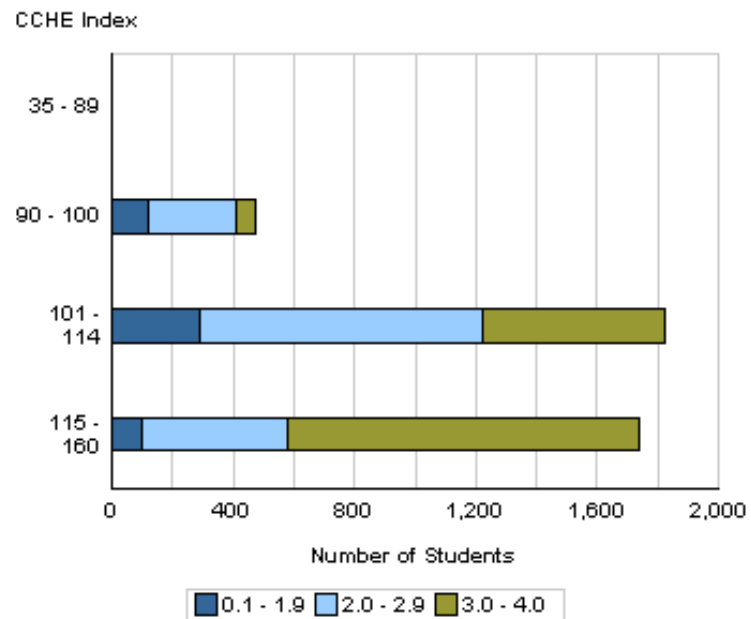
**Fall 2008 - Spring 2009  
 First Year CSU GPA by CCHE Index**



**Your College**



**All CSU Freshmen**



Number of New Freshmen by High School GPA & Rank,  
Test Scores, CCHE Index and CSU GPA  
CSU GPA after One Year for Freshmen Entering Fall 2008

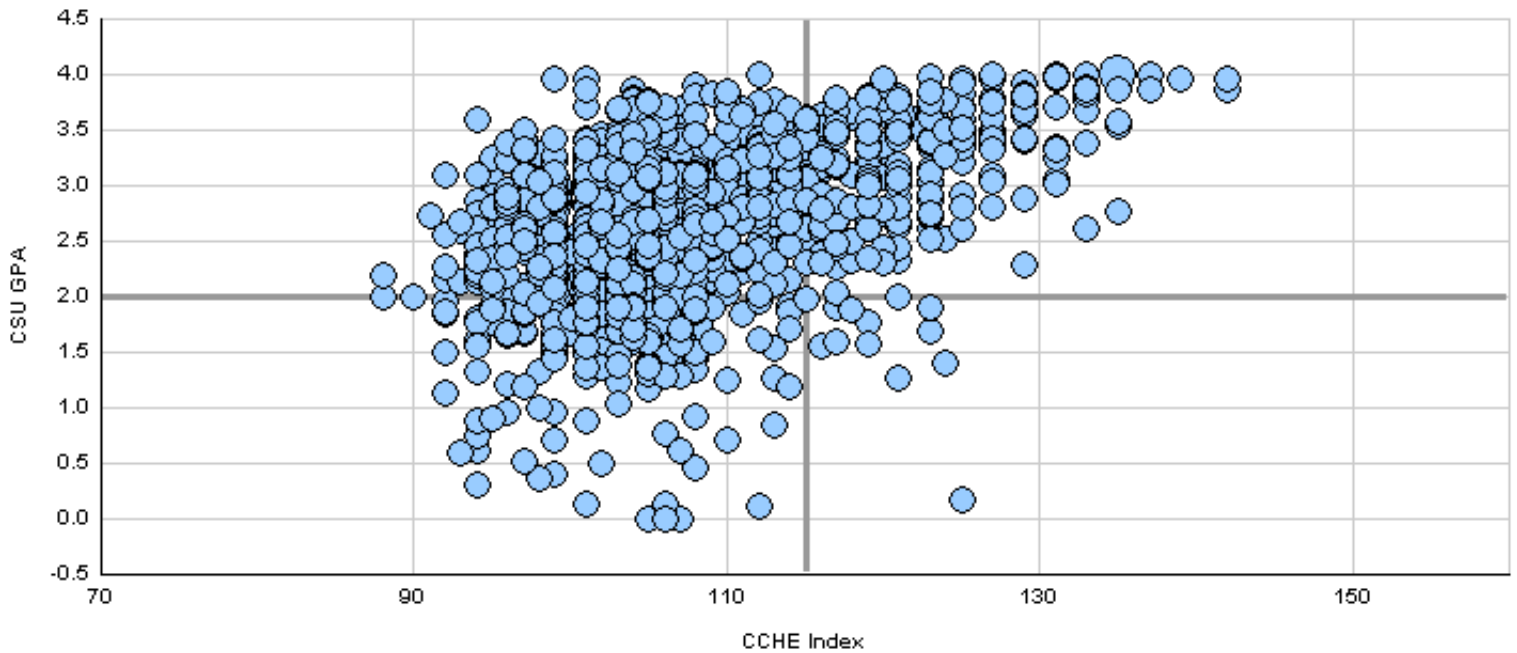
**Intra-University**

	CSU GPA				Total
	0.1 - 1.9	2.0 - 2.9	3.0 - 3.5	3.6 - 4.0	
<b>High School GPA</b>					
2 - 2.499		3			3
2.5 - 2.999	38	73	13	6	130
3 - 3.599	117	377	156	29	679
3.6 - 4.0	23	98	103	68	292
4.001 - 10	2	5	15	26	48
<b>Total</b>	<b>180</b>	<b>556</b>	<b>287</b>	<b>129</b>	<b>1,152</b>
<b>Percentile Rank</b>					
1 - 29	7	9	1	2	19
30 - 49	45	113	42	9	209
50 - 59	38	109	38	9	194
60 - 79	40	177	98	24	339
80 - 89	16	54	57	24	151
90 - 99	11	31	26	48	116
<b>Total</b>	<b>157</b>	<b>493</b>	<b>262</b>	<b>116</b>	<b>1,028</b>
<b>SAT Verbal</b>					
200 - 399	3	10	3	2	18
400 - 499	17	57	33	8	115
500 - 599	28	82	44	20	174
600 - 699	5	14	14	20	53
700 - 800		4	2	8	14
<b>Total</b>	<b>53</b>	<b>167</b>	<b>96</b>	<b>58</b>	<b>374</b>
<b>SAT Math</b>					
200 - 399	1	5	1		7
400 - 499	16	54	17	9	96
500 - 599	23	87	55	19	184
600 - 699	12	18	23	27	80
700 - 800	1	3		3	7
<b>Total</b>	<b>53</b>	<b>167</b>	<b>96</b>	<b>58</b>	<b>374</b>
<b>ACT Composite</b>					
15 - 18	21	28	11	1	61
19 - 22	73	258	110	19	460
23 - 26	57	195	119	49	420
27 - 36	12	31	34	49	126
<b>Total</b>	<b>163</b>	<b>512</b>	<b>274</b>	<b>118</b>	<b>1,067</b>
<b>CCHE Index</b>					
35 - 89		2			2
90 - 100	57	153	28	2	240
101 - 114	111	335	179	40	665
115 - 160	12	65	80	87	244
<b>Total</b>	<b>180</b>	<b>555</b>	<b>287</b>	<b>129</b>	<b>1,151</b>

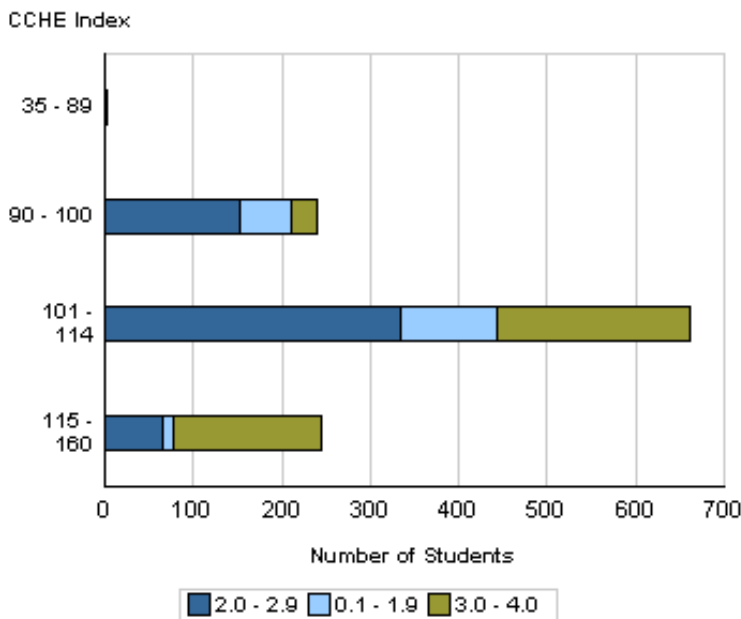
Number of New Freshmen by High School GPA & Rank,  
 Test Scores, CCHE Index and CSU GPA  
 CSU GPA after One Year for Freshmen Entering Fall 2008

**Intra-University**

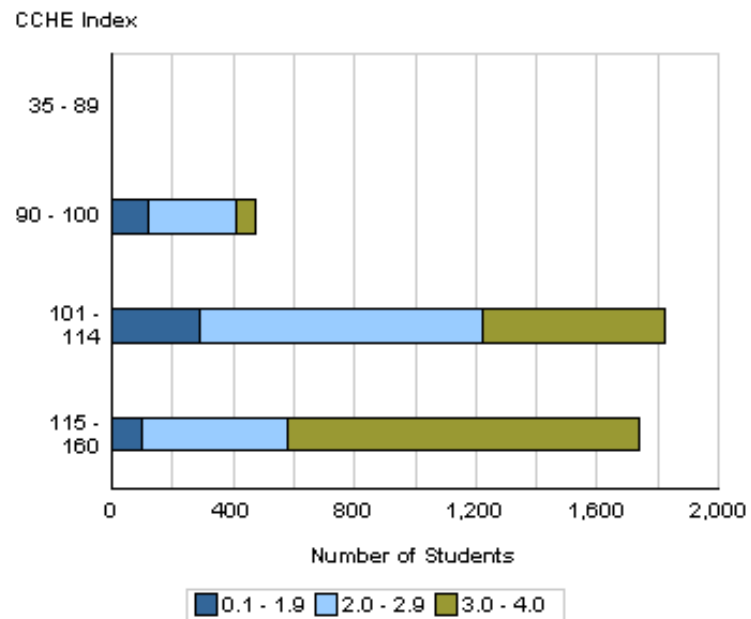
**Fall 2008 - Spring 2009  
 First Year CSU GPA by CCHE Index**



**Your College**



**All CSU Freshmen**



Number of New Freshmen by High School GPA & Rank,  
Test Scores, CCHE Index and CSU GPA  
CSU GPA after One Year for Freshmen Entering Fall 2008

**University Summary**

	CSU GPA				Total
	0.1 - 1.9	2.0 - 2.9	3.0 - 3.5	3.6 - 4.0	
<b>High School GPA</b>					
2 - 2.499		3			3
2.5 - 2.999	75	138	27	11	251
3 - 3.599	336	967	430	101	1,834
3.6 - 4.0	105	535	500	411	1,551
4.001 - 10	5	62	100	244	411
<b>Total</b>	<b>521</b>	<b>1,705</b>	<b>1,057</b>	<b>767</b>	<b>4,050</b>
<b>Percentile Rank</b>					
1 - 29	15	16	3	2	36
30 - 49	92	220	89	20	421
50 - 59	93	242	94	26	455
60 - 79	158	612	325	118	1,213
80 - 89	69	254	247	149	719
90 - 99	29	152	177	361	719
<b>Total</b>	<b>456</b>	<b>1,496</b>	<b>935</b>	<b>676</b>	<b>3,563</b>
<b>SAT Verbal</b>					
200 - 399	6	18	7	3	34
400 - 499	48	160	87	31	326
500 - 599	75	270	193	135	673
600 - 699	27	92	122	169	410
700 - 800	6	12	16	44	78
<b>Total</b>	<b>162</b>	<b>552</b>	<b>425</b>	<b>382</b>	<b>1,521</b>
<b>SAT Math</b>					
200 - 399	3	11	5		19
400 - 499	41	134	66	29	270
500 - 599	70	258	209	128	665
600 - 699	40	135	128	179	482
700 - 800	8	14	17	46	85
<b>Total</b>	<b>162</b>	<b>552</b>	<b>425</b>	<b>382</b>	<b>1,521</b>
<b>ACT Composite</b>					
1 - 14	1	1	1		3
15 - 18	41	67	21	1	130
19 - 22	174	608	252	85	1,119
23 - 26	196	674	458	244	1,572
27 - 36	65	233	250	363	911
<b>Total</b>	<b>477</b>	<b>1,583</b>	<b>982</b>	<b>693</b>	<b>3,735</b>
<b>CCHE Index</b>					
35 - 89	1	2			3
90 - 100	121	286	62	5	474
101 - 114	296	936	467	132	1,831
115 - 160	103	479	528	630	1,740
<b>Total</b>	<b>521</b>	<b>1,703</b>	<b>1,057</b>	<b>767</b>	<b>4,048</b>

Number of New Freshmen by High School GPA & Rank,  
Test Scores, CCHE Index and CSU GPA  
CSU GPA after One Year for Freshmen Entering Fall 2008

**University Summary**

**Fall 2008 - Spring 2009  
First Year CSU GPA by CCHE Index**

