

Freshmen Profile

2005



Five Year History

Office of Budgets and Institutional Analysis
 Profile of **All New** Freshmen Enrolled Fall Semesters
 Five Year Trend in High School Admissions Scores by College

| | 2001 | 2002 | 2003 | 2004 | 2005 |
|---|------------|------------|------------|------------|------------|
| Mean High School Rank | | | | | |
| Agricultural Sciences | 78 | 76 | 78 | 77 | 75 |
| Applied Human Sciences | 73 | 74 | 74 | 73 | 70 |
| Business | 83 | 81 | 81 | 81 | 80 |
| Engineering | 81 | 83 | 78 | 80 | 78 |
| Intra–University | 68 | 67 | 66 | 66 | 63 |
| Liberal Arts | 73 | 73 | 74 | 71 | 70 |
| Natural Resources | 72 | 74 | 70 | 72 | 72 |
| Natural Sciences | 76 | 76 | 76 | 76 | 76 |
| Veterinary Medicine + Biomedical Sci | 82 | 81 | 78 | 80 | 78 |
| Total | 74 | 74 | 73 | 73 | 71 |
| Mean SAT Verbal Score | | | | | |
| Agricultural Sciences | 563 | 567 | 559 | 568 | 568 |
| Applied Human Sciences | 522 | 517 | 522 | 528 | 523 |
| Business | 557 | 562 | 573 | 564 | 564 |
| Engineering | 567 | 572 | 574 | 583 | 585 |
| Intra–University | 522 | 521 | 527 | 535 | 525 |
| Liberal Arts | 574 | 568 | 570 | 576 | 568 |
| Natural Resources | 571 | 574 | 542 | 566 | 599 |
| Natural Sciences | 552 | 559 | 568 | 564 | 568 |
| Veterinary Medicine + Biomedical Sci | 567 | 565 | 566 | 573 | 574 |
| Total | 549 | 548 | 553 | 557 | 555 |
| Mean SAT Math Score | | | | | |
| Agricultural Sciences | 560 | 552 | 556 | 556 | 561 |
| Applied Human Sciences | 533 | 537 | 529 | 536 | 532 |
| Business | 585 | 585 | 585 | 585 | 592 |
| Engineering | 606 | 628 | 620 | 630 | 621 |
| Intra–University | 537 | 532 | 540 | 542 | 542 |
| Liberal Arts | 548 | 552 | 552 | 550 | 544 |
| Natural Resources | 559 | 561 | 551 | 565 | 565 |
| Natural Sciences | 565 | 572 | 578 | 576 | 583 |
| Veterinary Medicine + Biomedical Sci | 561 | 562 | 569 | 559 | 583 |
| Total | 557 | 559 | 561 | 563 | 563 |

Office of Budgets and Institutional Analysis
 Profile of **All New** Freshmen Enrolled Fall Semesters
 Five Year Trend in High School Admissions Scores by College

| | 2001 | 2002 | 2003 | 2004 | 2005 |
|---|--------------|--------------|--------------|--------------|--------------|
| Mean Composite ACT Score | | | | | |
| Agricultural Sciences | 24.4 | 24.6 | 24.4 | 24.5 | 24.4 |
| Applied Human Sciences | 22.8 | 23.1 | 23.1 | 23.3 | 22.8 |
| Business | 25.4 | 25.1 | 25.2 | 25.4 | 25.4 |
| Engineering | 25.9 | 26.2 | 26.2 | 26.5 | 26.5 |
| Intra–University | 22.9 | 22.9 | 22.8 | 23.4 | 22.7 |
| Liberal Arts | 24.3 | 24.7 | 24.5 | 24.9 | 24.0 |
| Natural Resources | 24.0 | 24.6 | 24.0 | 24.7 | 24.5 |
| Natural Sciences | 24.4 | 24.8 | 24.8 | 24.9 | 24.7 |
| Veterinary Medicine + Biomedical Sci | 24.8 | 25.1 | 24.8 | 24.9 | 25.0 |
| Total | 24.0 | 24.2 | 24.1 | 24.4 | 24.0 |
| Mean High School Grade Point Average | | | | | |
| Agricultural Sciences | 3.62 | 3.57 | 3.63 | 3.59 | 3.58 |
| Applied Human Sciences | 3.53 | 3.55 | 3.58 | 3.54 | 3.47 |
| Business | 3.76 | 3.73 | 3.75 | 3.73 | 3.74 |
| Engineering | 3.70 | 3.75 | 3.70 | 3.73 | 3.68 |
| Intra–University | 3.39 | 3.38 | 3.37 | 3.39 | 3.31 |
| Liberal Arts | 3.55 | 3.51 | 3.56 | 3.50 | 3.48 |
| Natural Resources | 3.51 | 3.51 | 3.48 | 3.52 | 3.49 |
| Natural Sciences | 3.58 | 3.58 | 3.60 | 3.60 | 3.61 |
| Veterinary Medicine + Biomedical Sci | 3.72 | 3.68 | 3.64 | 3.68 | 3.68 |
| Total | 3.55 | 3.53 | 3.54 | 3.54 | 3.50 |
| Mean CCHE Index | | | | | |
| Agricultural Sciences | 115.9 | 114.8 | 115.9 | 115.5 | 114.7 |
| Applied Human Sciences | 111.1 | 111.4 | 112.1 | 111.6 | 109.5 |
| Business | 120.1 | 119.0 | 119.5 | 119.4 | 119.2 |
| Engineering | 120.2 | 121.8 | 120.6 | 121.7 | 120.8 |
| Intra–University | 108.9 | 108.5 | 108.1 | 109.5 | 106.9 |
| Liberal Arts | 114.2 | 114.4 | 114.7 | 114.3 | 112.3 |
| Natural Resources | 113.4 | 114.3 | 112.6 | 114.5 | 113.5 |
| Natural Sciences | 114.9 | 115.8 | 116.1 | 116.2 | 115.7 |
| Veterinary Medicine + Biomedical Sci | 118.1 | 117.6 | 116.7 | 117.6 | 117.9 |
| Total | 113.9 | 113.6 | 113.6 | 114.2 | 112.5 |

For the purposes of making index comparisons across years, the 2004 index calculation formula is used for all years.

Office of Budgets and Institutional Analysis
 Profile of **Resident** Freshmen Enrolled Fall Semesters
 Five Year Trend in High School Admissions Scores by College

| | 2001 | 2002 | 2003 | 2004 | 2005 |
|---|------------|------------|------------|------------|------------|
| Mean High School Rank | | | | | |
| Agricultural Sciences | 77 | 76 | 79 | 74 | 76 |
| Applied Human Sciences | 73 | 75 | 75 | 73 | 70 |
| Business | 84 | 81 | 82 | 81 | 81 |
| Engineering | 80 | 82 | 78 | 79 | 78 |
| Intra–University | 69 | 68 | 66 | 67 | 64 |
| Liberal Arts | 75 | 72 | 74 | 71 | 71 |
| Natural Resources | 74 | 76 | 75 | 72 | 68 |
| Natural Sciences | 76 | 75 | 76 | 76 | 76 |
| Veterinary Medicine + Biomedical Sci | 82 | 79 | 78 | 79 | 78 |
| Total | 75 | 74 | 73 | 73 | 71 |
| Mean SAT Verbal Score | | | | | |
| Agricultural Sciences | 546 | 550 | 563 | 559 | 575 |
| Applied Human Sciences | 515 | 515 | 515 | 519 | 518 |
| Business | 557 | 557 | 577 | 563 | 562 |
| Engineering | 561 | 561 | 568 | 584 | 576 |
| Intra–University | 523 | 520 | 527 | 534 | 528 |
| Liberal Arts | 573 | 566 | 568 | 575 | 567 |
| Natural Resources | 568 | 559 | 548 | 531 | 593 |
| Natural Sciences | 551 | 556 | 566 | 559 | 569 |
| Veterinary Medicine + Biomedical Sci | 566 | 558 | 578 | 556 | 574 |
| Total | 546 | 544 | 552 | 553 | 553 |
| Mean SAT Math Score | | | | | |
| Agricultural Sciences | 533 | 548 | 557 | 516 | 561 |
| Applied Human Sciences | 528 | 532 | 523 | 524 | 525 |
| Business | 576 | 571 | 580 | 578 | 588 |
| Engineering | 603 | 616 | 613 | 616 | 617 |
| Intra–University | 532 | 528 | 537 | 538 | 539 |
| Liberal Arts | 548 | 543 | 550 | 546 | 544 |
| Natural Resources | 546 | 547 | 548 | 539 | 561 |
| Natural Sciences | 562 | 571 | 571 | 572 | 582 |
| Veterinary Medicine + Biomedical Sci | 552 | 558 | 571 | 547 | 570 |
| Total | 553 | 553 | 558 | 556 | 560 |

Office of Budgets and Institutional Analysis
 Profile of **Resident** Freshmen Enrolled Fall Semesters
 Five Year Trend in High School Admissions Scores by College

| | 2001 | 2002 | 2003 | 2004 | 2005 |
|---|--------------|--------------|--------------|--------------|--------------|
| Mean Composite ACT Score | | | | | |
| Agricultural Sciences | 24.2 | 24.5 | 24.4 | 24.3 | 24.2 |
| Applied Human Sciences | 22.8 | 23.0 | 23.1 | 23.0 | 22.7 |
| Business | 25.1 | 25.1 | 25.1 | 25.2 | 25.3 |
| Engineering | 25.7 | 26.0 | 26.0 | 26.2 | 26.3 |
| Intra–University | 22.8 | 22.9 | 22.7 | 23.3 | 22.7 |
| Liberal Arts | 24.2 | 24.7 | 24.5 | 24.8 | 24.1 |
| Natural Resources | 23.4 | 24.2 | 24.0 | 24.7 | 24.0 |
| Natural Sciences | 24.2 | 24.6 | 24.7 | 24.8 | 24.7 |
| Veterinary Medicine + Biomedical Sci | 24.7 | 25.0 | 24.9 | 24.7 | 25.0 |
| Total | 23.9 | 24.0 | 24.0 | 24.3 | 23.9 |
| Mean High School Grade Point Average | | | | | |
| Agricultural Sciences | 3.62 | 3.59 | 3.66 | 3.56 | 3.66 |
| Applied Human Sciences | 3.53 | 3.57 | 3.60 | 3.55 | 3.48 |
| Business | 3.76 | 3.73 | 3.76 | 3.75 | 3.75 |
| Engineering | 3.69 | 3.73 | 3.70 | 3.72 | 3.68 |
| Intra–University | 3.41 | 3.41 | 3.40 | 3.41 | 3.33 |
| Liberal Arts | 3.57 | 3.51 | 3.59 | 3.51 | 3.50 |
| Natural Resources | 3.53 | 3.58 | 3.52 | 3.58 | 3.48 |
| Natural Sciences | 3.58 | 3.58 | 3.62 | 3.60 | 3.63 |
| Veterinary Medicine + Biomedical Sci | 3.73 | 3.67 | 3.66 | 3.67 | 3.69 |
| Total | 3.56 | 3.54 | 3.56 | 3.55 | 3.51 |
| Mean CCHE Index | | | | | |
| Agricultural Sciences | 114.5 | 114.7 | 116.6 | 113.9 | 115.4 |
| Applied Human Sciences | 111.0 | 111.4 | 111.9 | 111.4 | 109.4 |
| Business | 119.7 | 118.5 | 119.3 | 119.3 | 119.2 |
| Engineering | 119.6 | 120.6 | 120.1 | 120.9 | 120.4 |
| Intra–University | 109.1 | 108.9 | 108.3 | 109.6 | 107.1 |
| Liberal Arts | 114.3 | 114.0 | 115.1 | 114.1 | 112.6 |
| Natural Resources | 112.8 | 114.5 | 112.9 | 114.6 | 112.0 |
| Natural Sciences | 114.6 | 115.5 | 115.8 | 115.9 | 116.0 |
| Veterinary Medicine + Biomedical Sci | 117.8 | 117.2 | 117.0 | 116.5 | 117.7 |
| Total | 113.6 | 113.4 | 113.6 | 113.8 | 112.5 |

For the purposes of making index comparisons across years, the 2004 index calculation formula is used for all years.

Office of Budgets and Institutional Analysis
 Profile of **Nonresident** Freshmen Enrolled Fall Semesters
 Five Year Trend in High School Admissions Scores by College

| | 2001 | 2002 | 2003 | 2004 | 2005 |
|---|------------|------------|------------|------------|------------|
| Mean High School Rank | | | | | |
| Agricultural Sciences | 81 | 76 | 75 | 81 | 73 |
| Applied Human Sciences | 74 | 70 | 72 | 70 | 66 |
| Business | 81 | 79 | 79 | 79 | 76 |
| Engineering | 84 | 86 | 80 | 84 | 82 |
| Intra–University | 65 | 61 | 61 | 63 | 58 |
| Liberal Arts | 69 | 75 | 69 | 71 | 65 |
| Natural Resources | 70 | 71 | 62 | 71 | 79 |
| Natural Sciences | 75 | 78 | 74 | 77 | 74 |
| Veterinary Medicine + Biomedical Sci | 84 | 83 | 79 | 82 | 79 |
| Total | 74 | 73 | 71 | 74 | 69 |
| Mean SAT Verbal Score | | | | | |
| Agricultural Sciences | 574 | 578 | 556 | 573 | 565 |
| Applied Human Sciences | 538 | 521 | 537 | 546 | 536 |
| Business | 556 | 573 | 563 | 567 | 570 |
| Engineering | 583 | 592 | 590 | 581 | 624 |
| Intra–University | 520 | 522 | 527 | 538 | 515 |
| Liberal Arts | 577 | 572 | 575 | 578 | 572 |
| Natural Resources | 574 | 585 | 538 | 583 | 605 |
| Natural Sciences | 556 | 567 | 571 | 577 | 564 |
| Veterinary Medicine + Biomedical Sci | 568 | 573 | 556 | 590 | 574 |
| Total | 555 | 557 | 555 | 566 | 558 |
| Mean SAT Math Score | | | | | |
| Agricultural Sciences | 577 | 554 | 556 | 574 | 561 |
| Applied Human Sciences | 543 | 545 | 540 | 559 | 548 |
| Business | 612 | 616 | 597 | 610 | 601 |
| Engineering | 613 | 652 | 637 | 658 | 638 |
| Intra–University | 550 | 542 | 549 | 554 | 550 |
| Liberal Arts | 549 | 574 | 557 | 562 | 545 |
| Natural Resources | 569 | 572 | 554 | 577 | 568 |
| Natural Sciences | 574 | 574 | 592 | 586 | 584 |
| Veterinary Medicine + Biomedical Sci | 570 | 565 | 566 | 571 | 603 |
| Total | 569 | 572 | 569 | 579 | 570 |

Office of Budgets and Institutional Analysis
 Profile of **Nonresident** Freshmen Enrolled Fall Semesters
 Five Year Trend in High School Admissions Scores by College

| | 2001 | 2002 | 2003 | 2004 | 2005 |
|---|--------------|--------------|--------------|--------------|--------------|
| Mean Composite ACT Score | | | | | |
| Agricultural Sciences | 24.9 | 25.0 | 24.4 | 25.0 | 24.8 |
| Applied Human Sciences | 22.6 | 23.9 | 23.4 | 24.7 | 23.2 |
| Business | 26.4 | 25.5 | 25.6 | 26.5 | 25.6 |
| Engineering | 26.6 | 27.5 | 27.1 | 27.7 | 27.8 |
| Intra–University | 23.1 | 23.3 | 23.6 | 23.7 | 23.1 |
| Liberal Arts | 24.8 | 25.0 | 24.1 | 25.2 | 23.4 |
| Natural Resources | 24.7 | 25.3 | 24.1 | 24.6 | 25.7 |
| Natural Sciences | 25.4 | 25.7 | 25.6 | 25.8 | 24.7 |
| Veterinary Medicine + Biomedical Sci | 25.1 | 25.3 | 24.4 | 25.7 | 25.1 |
| Total | 24.7 | 24.9 | 24.6 | 25.2 | 24.4 |
| Mean High School Grade Point Average | | | | | |
| Agricultural Sciences | 3.61 | 3.53 | 3.58 | 3.62 | 3.50 |
| Applied Human Sciences | 3.54 | 3.48 | 3.52 | 3.49 | 3.40 |
| Business | 3.75 | 3.72 | 3.71 | 3.62 | 3.70 |
| Engineering | 3.72 | 3.82 | 3.71 | 3.76 | 3.64 |
| Intra–University | 3.30 | 3.23 | 3.24 | 3.28 | 3.20 |
| Liberal Arts | 3.45 | 3.51 | 3.39 | 3.49 | 3.37 |
| Natural Resources | 3.49 | 3.42 | 3.43 | 3.44 | 3.50 |
| Natural Sciences | 3.57 | 3.57 | 3.52 | 3.60 | 3.52 |
| Veterinary Medicine + Biomedical Sci | 3.70 | 3.69 | 3.61 | 3.71 | 3.65 |
| Total | 3.53 | 3.49 | 3.47 | 3.52 | 3.44 |
| Mean CCHE Index | | | | | |
| Agricultural Sciences | 117.6 | 114.9 | 114.9 | 117.4 | 113.9 |
| Applied Human Sciences | 111.4 | 111.5 | 112.5 | 112.5 | 110.0 |
| Business | 121.1 | 120.5 | 120.2 | 120.3 | 119.0 |
| Engineering | 121.9 | 125.5 | 122.7 | 124.6 | 124.0 |
| Intra–University | 108.0 | 106.9 | 107.5 | 109.0 | 105.9 |
| Liberal Arts | 113.9 | 115.5 | 112.6 | 114.8 | 110.6 |
| Natural Resources | 114.0 | 114.1 | 112.1 | 114.4 | 115.8 |
| Natural Sciences | 116.2 | 117.0 | 116.9 | 118.0 | 114.8 |
| Veterinary Medicine + Biomedical Sci | 118.5 | 118.3 | 116.2 | 119.8 | 118.6 |
| Total | 114.8 | 114.4 | 113.9 | 115.5 | 112.7 |

For the purposes of making index comparisons across years, the 2004 index calculation formula is used for all years.

Fall 2005 Freshmen

Office of Budgets and Institutional Analysis
Freshmen Profile
Fall 2005

| University | Admitted N= 9517 | | | | Enrolled N=3892 | | | |
|------------------------|------------------|-------------|-------------|---------|-----------------|-------------|-------------|---------|
| | Res | Nonres | Total | Percent | Res | Nonres | Total | Percent |
| High School GPA | | | | | | | | |
| .1 – 1.999 | 0 | 1 | 1 | 0 | 0 | 0 | 0 | 0 |
| 2 – 2.499 | 4 | 13 | 17 | 0 | 4 | 6 | 10 | 0 |
| 2.5 – 2.999 | 434 | 338 | 772 | 9 | 253 | 98 | 351 | 10 |
| 3 – 3.599 | 2746 | 1317 | 4063 | 47 | 1399 | 305 | 1704 | 47 |
| 3.6 – 4.0 | 2627 | 1197 | 3824 | 44 | 1284 | 253 | 1537 | 43 |
| Valid Cases | 5811 | 2866 | 8677 | 100 | 2940 | 662 | 3602 | 100 |
| Means | 3.48 | 3.43 | 3.47 | | 3.46 | 3.38 | 3.45 | |
| Percentile Rank | | | | | | | | |
| 1 – 29 | 60 | 48 | 108 | 1 | 47 | 21 | 68 | 2 |
| 30 – 49 | 655 | 253 | 908 | 11 | 366 | 74 | 440 | 13 |
| 50 – 59 | 696 | 286 | 982 | 12 | 351 | 77 | 428 | 12 |
| 60 – 79 | 2075 | 701 | 2776 | 34 | 1082 | 155 | 1237 | 35 |
| 80 – 89 | 1165 | 413 | 1578 | 19 | 577 | 92 | 669 | 19 |
| 90 – 99 | 1245 | 561 | 1806 | 22 | 556 | 106 | 662 | 19 |
| Valid Cases | 5896 | 2262 | 8158 | 100 | 2979 | 525 | 3504 | 100 |
| Means | 72.7 | 72.8 | 72.7 | | 71.4 | 69.5 | 71.1 | |
| SAT Verbal | | | | | | | | |
| 200 – 399 | 43 | 28 | 71 | 1 | 20 | 8 | 28 | 2 |
| 400 – 499 | 564 | 407 | 971 | 20 | 263 | 103 | 366 | 22 |
| 500 – 599 | 1266 | 1035 | 2301 | 47 | 539 | 222 | 761 | 45 |
| 600 – 699 | 720 | 626 | 1346 | 27 | 289 | 144 | 433 | 26 |
| 700 – 800 | 149 | 106 | 255 | 5 | 60 | 26 | 86 | 5 |
| Valid Cases | 2742 | 2202 | 4944 | 100 | 1171 | 503 | 1674 | 100 |
| Means | 558 | 561 | 560 | | 553 | 558 | 555 | |
| SAT Math | | | | | | | | |
| 200 – 399 | 48 | 18 | 66 | 1 | 21 | 5 | 26 | 2 |
| 400 – 499 | 489 | 297 | 786 | 16 | 229 | 76 | 305 | 18 |
| 500 – 599 | 1240 | 1020 | 2260 | 46 | 520 | 231 | 751 | 45 |
| 600 – 699 | 820 | 744 | 1564 | 32 | 346 | 169 | 515 | 31 |
| 700 – 800 | 145 | 123 | 268 | 5 | 55 | 22 | 77 | 5 |
| Valid Cases | 2742 | 2202 | 4944 | 100 | 1171 | 503 | 1674 | 100 |
| Means | 564 | 575 | 568 | | 560 | 570 | 563 | |
| ACT Composite | | | | | | | | |
| 1 – 14 | 3 | 5 | 8 | 0 | 2 | 1 | 3 | 0 |
| 15 – 18 | 246 | 74 | 320 | 4 | 118 | 12 | 130 | 4 |
| 19 – 22 | 1881 | 479 | 2360 | 29 | 1001 | 120 | 1121 | 32 |
| 23 – 26 | 2565 | 773 | 3338 | 41 | 1273 | 174 | 1447 | 41 |
| 27 – 36 | 1469 | 567 | 2036 | 25 | 682 | 115 | 797 | 23 |
| Valid Cases | 6164 | 1898 | 8062 | 100 | 3076 | 422 | 3498 | 100 |
| Means | 24.1 | 24.5 | 24.2 | | 23.9 | 24.4 | 24.0 | |
| CCHE Index | | | | | | | | |
| 35 – 89 | 1 | 0 | 1 | 0 | 1 | 0 | 1 | 0 |
| 90 – 100 | 732 | 336 | 1068 | 11 | 412 | 107 | 519 | 13 |
| 101 – 114 | 2824 | 1310 | 4134 | 44 | 1447 | 316 | 1763 | 46 |
| 115 – 160 | 2755 | 1457 | 4212 | 45 | 1280 | 285 | 1565 | 41 |
| Valid Cases | 6312 | 3103 | 9415 | 100 | 3140 | 708 | 3848 | 100 |
| Means | 113 | 114 | 114 | | 113 | 113 | 113 | |

Office of Budgets and Institutional Analysis
Freshmen Profile
Fall 2005

Agricultural Sciences**Admitted N= 432****Enrolled N=223**

| | Res | Nonres | Total | Percent | Res | Nonres | Total | Percent |
|------------------------|-------------|-------------|-------------|---------|-------------|-------------|-------------|---------|
| High School GPA | | | | | | | | |
| 2 – 2.499 | 0 | 1 | 1 | 0 | 0 | 1 | 1 | 0 |
| 2.5 – 2.999 | 3 | 24 | 27 | 7 | 2 | 13 | 15 | 7 |
| 3 – 3.599 | 74 | 95 | 169 | 43 | 47 | 36 | 83 | 40 |
| 3.6 – 4.0 | 93 | 102 | 195 | 50 | 66 | 40 | 106 | 52 |
| Valid Cases | 170 | 222 | 392 | 100 | 115 | 90 | 205 | 100 |
| Means | 3.60 | 3.47 | 3.52 | | 3.62 | 3.41 | 3.53 | |
| Percentile Rank | | | | | | | | |
| 1 – 29 | 1 | 3 | 4 | 1 | 1 | 3 | 4 | 2 |
| 30 – 49 | 11 | 13 | 24 | 7 | 8 | 7 | 15 | 8 |
| 50 – 59 | 11 | 24 | 35 | 10 | 7 | 8 | 15 | 8 |
| 60 – 79 | 67 | 54 | 121 | 35 | 46 | 16 | 62 | 34 |
| 80 – 89 | 40 | 33 | 73 | 21 | 23 | 13 | 36 | 20 |
| 90 – 99 | 41 | 52 | 93 | 27 | 30 | 20 | 50 | 27 |
| Valid Cases | 171 | 179 | 350 | 100 | 115 | 67 | 182 | 100 |
| Means | 76.6 | 74.6 | 75.6 | | 76.5 | 73.4 | 75.3 | |
| SAT Verbal | | | | | | | | |
| 200 – 399 | 0 | 3 | 3 | 1 | 0 | 2 | 2 | 2 |
| 400 – 499 | 8 | 30 | 38 | 16 | 5 | 14 | 19 | 17 |
| 500 – 599 | 26 | 70 | 96 | 41 | 17 | 28 | 45 | 41 |
| 600 – 699 | 16 | 64 | 80 | 34 | 11 | 27 | 38 | 35 |
| 700 – 800 | 3 | 12 | 15 | 6 | 3 | 3 | 6 | 5 |
| Valid Cases | 53 | 179 | 232 | 100 | 36 | 74 | 110 | 100 |
| Means | 569 | 573 | 572 | | 575 | 565 | 568 | |
| SAT Math | | | | | | | | |
| 200 – 399 | 1 | 2 | 3 | 1 | 1 | 2 | 3 | 3 |
| 400 – 499 | 10 | 28 | 38 | 16 | 7 | 13 | 20 | 18 |
| 500 – 599 | 23 | 85 | 108 | 47 | 16 | 34 | 50 | 45 |
| 600 – 699 | 16 | 57 | 73 | 31 | 10 | 22 | 32 | 29 |
| 700 – 800 | 3 | 7 | 10 | 4 | 2 | 3 | 5 | 5 |
| Valid Cases | 53 | 179 | 232 | 100 | 36 | 74 | 110 | 100 |
| Means | 570 | 567 | 568 | | 561 | 561 | 561 | |
| ACT Composite | | | | | | | | |
| 1 – 14 | 0 | 1 | 1 | 0 | 0 | 0 | 0 | 0 |
| 15 – 18 | 8 | 3 | 11 | 3 | 3 | 0 | 3 | 2 |
| 19 – 22 | 54 | 32 | 86 | 27 | 39 | 8 | 47 | 28 |
| 23 – 26 | 69 | 64 | 133 | 42 | 44 | 29 | 73 | 43 |
| 27 – 36 | 45 | 43 | 88 | 28 | 32 | 14 | 46 | 27 |
| Valid Cases | 176 | 143 | 319 | 100 | 118 | 51 | 169 | 100 |
| Means | 24.2 | 24.6 | 24.3 | | 24.2 | 24.8 | 24.4 | |
| CCHE Index | | | | | | | | |
| 90 – 100 | 15 | 26 | 41 | 10 | 9 | 16 | 25 | 11 |
| 101 – 114 | 76 | 89 | 165 | 39 | 49 | 35 | 84 | 38 |
| 115 – 160 | 90 | 130 | 220 | 52 | 63 | 47 | 110 | 50 |
| Valid Cases | 181 | 245 | 426 | 100 | 121 | 98 | 219 | 100 |
| Means | 115 | 115 | 115 | | 115 | 114 | 115 | |

Office of Budgets and Institutional Analysis
Freshmen Profile
Fall 2005

| Applied Human Sciences | Admitted N= 964 | | | | Enrolled N=466 | | | |
|------------------------|-----------------|-------------|-------------|---------|----------------|-------------|-------------|---------|
| | Res | Nonres | Total | Percent | Res | Nonres | Total | Percent |
| High School GPA | | | | | | | | |
| 2.5 – 2.999 | 44 | 30 | 74 | 8 | 33 | 9 | 42 | 9 |
| 3 – 3.599 | 295 | 152 | 447 | 50 | 182 | 38 | 220 | 50 |
| 3.6 – 4.0 | 267 | 115 | 382 | 42 | 159 | 23 | 182 | 41 |
| Valid Cases | 606 | 297 | 903 | 100 | 374 | 70 | 444 | 100 |
| Means | 3.48 | 3.42 | 3.46 | | 3.45 | 3.36 | 3.44 | |
| Percentile Rank | | | | | | | | |
| 1 – 29 | 6 | 6 | 12 | 1 | 4 | 3 | 7 | 2 |
| 30 – 49 | 73 | 34 | 107 | 13 | 52 | 9 | 61 | 14 |
| 50 – 59 | 66 | 30 | 96 | 11 | 46 | 11 | 57 | 13 |
| 60 – 79 | 230 | 80 | 310 | 37 | 136 | 13 | 149 | 35 |
| 80 – 89 | 127 | 38 | 165 | 20 | 78 | 11 | 89 | 21 |
| 90 – 99 | 103 | 46 | 149 | 18 | 52 | 10 | 62 | 15 |
| Valid Cases | 605 | 234 | 839 | 100 | 368 | 57 | 425 | 100 |
| Means | 71.9 | 69.8 | 71.3 | | 70.4 | 66.1 | 69.8 | |
| SAT Verbal | | | | | | | | |
| 200 – 399 | 9 | 2 | 11 | 2 | 7 | 0 | 7 | 4 |
| 400 – 499 | 74 | 53 | 127 | 28 | 42 | 13 | 55 | 30 |
| 500 – 599 | 106 | 119 | 225 | 50 | 60 | 28 | 88 | 48 |
| 600 – 699 | 36 | 42 | 78 | 17 | 20 | 9 | 29 | 16 |
| 700 – 800 | 4 | 3 | 7 | 2 | 2 | 1 | 3 | 2 |
| Valid Cases | 229 | 219 | 448 | 100 | 131 | 51 | 182 | 100 |
| Means | 523 | 538 | 530 | | 518 | 536 | 523 | |
| SAT Math | | | | | | | | |
| 200 – 399 | 6 | 0 | 6 | 1 | 6 | 0 | 6 | 3 |
| 400 – 499 | 69 | 38 | 107 | 24 | 44 | 7 | 51 | 28 |
| 500 – 599 | 106 | 124 | 230 | 51 | 53 | 36 | 89 | 49 |
| 600 – 699 | 44 | 52 | 96 | 21 | 26 | 7 | 33 | 18 |
| 700 – 800 | 4 | 5 | 9 | 2 | 2 | 1 | 3 | 2 |
| Valid Cases | 229 | 219 | 448 | 100 | 131 | 51 | 182 | 100 |
| Means | 531 | 554 | 542 | | 525 | 548 | 532 | |
| ACT Composite | | | | | | | | |
| 1 – 14 | 0 | 1 | 1 | 0 | 0 | 1 | 1 | 0 |
| 15 – 18 | 39 | 11 | 50 | 6 | 20 | 3 | 23 | 5 |
| 19 – 22 | 260 | 65 | 325 | 40 | 176 | 14 | 190 | 45 |
| 23 – 26 | 249 | 85 | 334 | 41 | 142 | 21 | 163 | 38 |
| 27 – 36 | 74 | 31 | 105 | 13 | 41 | 7 | 48 | 11 |
| Valid Cases | 622 | 193 | 815 | 100 | 379 | 46 | 425 | 100 |
| Means | 22.8 | 23.3 | 22.9 | | 22.7 | 23.2 | 22.8 | |
| CCHE Index | | | | | | | | |
| 90 – 100 | 112 | 43 | 155 | 16 | 77 | 14 | 91 | 20 |
| 101 – 114 | 307 | 162 | 469 | 49 | 191 | 35 | 226 | 49 |
| 115 – 160 | 218 | 117 | 335 | 35 | 120 | 25 | 145 | 31 |
| Valid Cases | 637 | 322 | 959 | 100 | 388 | 74 | 462 | 100 |
| Means | 110 | 111 | 111 | | 109 | 110 | 109 | |

Office of Budgets and Institutional Analysis
Freshmen Profile
Fall 2005

Business

| | Admitted N= 693 | | | | Enrolled N=301 | | | |
|------------------------|------------------------|-------------|-------------|---------|-----------------------|-------------|-------------|---------|
| | Res | Nonres | Total | Percent | Res | Nonres | Total | Percent |
| High School GPA | | | | | | | | |
| 2.5 – 2.999 | 2 | 3 | 5 | 1 | 1 | 2 | 3 | 1 |
| 3 – 3.599 | 102 | 70 | 172 | 28 | 54 | 13 | 67 | 25 |
| 3.6 – 4.0 | 313 | 123 | 436 | 71 | 171 | 31 | 202 | 74 |
| Valid Cases | 417 | 196 | 613 | 100 | 226 | 46 | 272 | 100 |
| Means | 3.69 | 3.63 | 3.67 | | 3.70 | 3.63 | 3.69 | |
| Percentile Rank | | | | | | | | |
| 1 – 29 | 0 | 1 | 1 | 0 | 0 | 0 | 0 | 0 |
| 30 – 49 | 11 | 7 | 18 | 3 | 5 | 3 | 8 | 3 |
| 50 – 59 | 20 | 18 | 38 | 6 | 9 | 4 | 13 | 5 |
| 60 – 79 | 149 | 58 | 207 | 34 | 86 | 17 | 103 | 37 |
| 80 – 89 | 135 | 37 | 172 | 28 | 73 | 5 | 78 | 28 |
| 90 – 99 | 129 | 49 | 178 | 29 | 65 | 13 | 78 | 28 |
| Valid Cases | 444 | 170 | 614 | 100 | 238 | 42 | 280 | 100 |
| Means | 81.1 | 77.2 | 80.0 | | 80.7 | 76.0 | 80.0 | |
| SAT Verbal | | | | | | | | |
| 200 – 399 | 1 | 0 | 1 | 0 | 1 | 0 | 1 | 1 |
| 400 – 499 | 28 | 10 | 38 | 10 | 20 | 3 | 23 | 18 |
| 500 – 599 | 111 | 97 | 208 | 56 | 41 | 24 | 65 | 52 |
| 600 – 699 | 68 | 46 | 114 | 31 | 25 | 8 | 33 | 26 |
| 700 – 800 | 5 | 7 | 12 | 3 | 3 | 1 | 4 | 3 |
| Valid Cases | 213 | 160 | 373 | 100 | 90 | 36 | 126 | 100 |
| Means | 571 | 576 | 573 | | 562 | 570 | 564 | |
| SAT Math | | | | | | | | |
| 400 – 499 | 15 | 6 | 21 | 6 | 9 | 2 | 11 | 9 |
| 500 – 599 | 93 | 62 | 155 | 42 | 38 | 14 | 52 | 41 |
| 600 – 699 | 94 | 81 | 175 | 47 | 37 | 20 | 57 | 45 |
| 700 – 800 | 11 | 11 | 22 | 6 | 6 | 0 | 6 | 5 |
| Valid Cases | 213 | 160 | 373 | 100 | 90 | 36 | 126 | 100 |
| Means | 591 | 603 | 596 | | 588 | 601 | 592 | |
| ACT Composite | | | | | | | | |
| 15 – 18 | 1 | 0 | 1 | 0 | 1 | 0 | 1 | 0 |
| 19 – 22 | 61 | 11 | 72 | 12 | 33 | 4 | 37 | 13 |
| 23 – 26 | 232 | 68 | 300 | 51 | 130 | 17 | 147 | 53 |
| 27 – 36 | 164 | 54 | 218 | 37 | 79 | 12 | 91 | 33 |
| Valid Cases | 458 | 133 | 591 | 100 | 243 | 33 | 276 | 100 |
| Means | 25.5 | 25.8 | 25.5 | | 25.3 | 25.6 | 25.4 | |
| CCHE Index | | | | | | | | |
| 101 – 114 | 115 | 53 | 168 | 25 | 67 | 15 | 82 | 28 |
| 115 – 160 | 350 | 167 | 517 | 75 | 179 | 36 | 215 | 72 |
| Valid Cases | 465 | 220 | 685 | 100 | 246 | 51 | 297 | 100 |
| Means | 120 | 120 | 120 | | 119 | 119 | 119 | |

Office of Budgets and Institutional Analysis
Freshmen Profile
Fall 2005

| Engineering | Admitted N= 724 | | | | Enrolled N=263 | | | |
|------------------------|-----------------|-------------|-------------|---------|----------------|-------------|-------------|---------|
| | Res | Nonres | Total | Percent | Res | Nonres | Total | Percent |
| High School GPA | | | | | | | | |
| 2.5 – 2.999 | 1 | 2 | 3 | 1 | 1 | 1 | 2 | 1 |
| 3 – 3.599 | 168 | 64 | 232 | 39 | 82 | 10 | 92 | 41 |
| 3.6 – 4.0 | 252 | 113 | 365 | 61 | 109 | 21 | 130 | 58 |
| Valid Cases | 421 | 179 | 600 | 100 | 192 | 32 | 224 | 100 |
| Means | 3.63 | 3.65 | 3.63 | | 3.60 | 3.60 | 3.60 | |
| Percentile Rank | | | | | | | | |
| 1 – 29 | 1 | 0 | 1 | 0 | 0 | 0 | 0 | 0 |
| 30 – 49 | 20 | 5 | 25 | 4 | 11 | 0 | 11 | 5 |
| 50 – 59 | 43 | 8 | 51 | 8 | 18 | 2 | 20 | 8 |
| 60 – 79 | 145 | 46 | 191 | 30 | 75 | 8 | 83 | 35 |
| 80 – 89 | 102 | 42 | 144 | 23 | 49 | 6 | 55 | 23 |
| 90 – 99 | 163 | 59 | 222 | 35 | 59 | 10 | 69 | 29 |
| Valid Cases | 474 | 160 | 634 | 100 | 212 | 26 | 238 | 100 |
| Means | 79.4 | 82.1 | 80.1 | | 77.6 | 81.7 | 78.1 | |
| SAT Verbal | | | | | | | | |
| 200 – 399 | 1 | 1 | 2 | 0 | 0 | 0 | 0 | 0 |
| 400 – 499 | 25 | 16 | 41 | 9 | 10 | 1 | 11 | 8 |
| 500 – 599 | 138 | 65 | 203 | 47 | 60 | 7 | 67 | 50 |
| 600 – 699 | 98 | 57 | 155 | 36 | 31 | 13 | 44 | 33 |
| 700 – 800 | 20 | 13 | 33 | 8 | 7 | 4 | 11 | 8 |
| Valid Cases | 282 | 152 | 434 | 100 | 108 | 25 | 133 | 100 |
| Means | 583 | 585 | 584 | | 576 | 624 | 585 | |
| SAT Math | | | | | | | | |
| 400 – 499 | 7 | 1 | 8 | 2 | 5 | 0 | 5 | 4 |
| 500 – 599 | 86 | 33 | 119 | 27 | 31 | 6 | 37 | 28 |
| 600 – 699 | 146 | 86 | 232 | 53 | 60 | 16 | 76 | 57 |
| 700 – 800 | 43 | 32 | 75 | 17 | 12 | 3 | 15 | 11 |
| Valid Cases | 282 | 152 | 434 | 100 | 108 | 25 | 133 | 100 |
| Means | 624 | 643 | 631 | | 617 | 638 | 621 | |
| ACT Composite | | | | | | | | |
| 19 – 22 | 47 | 8 | 55 | 9 | 22 | 2 | 24 | 10 |
| 23 – 26 | 227 | 41 | 268 | 43 | 107 | 4 | 111 | 45 |
| 27 – 36 | 220 | 83 | 303 | 48 | 92 | 17 | 109 | 45 |
| Valid Cases | 494 | 132 | 626 | 100 | 221 | 23 | 244 | 100 |
| Means | 26.4 | 27.4 | 26.6 | | 26.3 | 27.8 | 26.5 | |
| CCHE Index | | | | | | | | |
| 101 – 114 | 146 | 39 | 185 | 26 | 71 | 6 | 77 | 30 |
| 115 – 160 | 358 | 166 | 524 | 74 | 151 | 28 | 179 | 70 |
| Valid Cases | 504 | 205 | 709 | 100 | 222 | 34 | 256 | 100 |
| Means | 121 | 123 | 122 | | 120 | 124 | 121 | |

Office of Budgets and Institutional Analysis
Freshmen Profile
Fall 2005

Intra-University

| | Admitted N= 2785 | | | | Enrolled N=1106 | | | |
|------------------------|-------------------------|-------------|-------------|---------|------------------------|-------------|-------------|---------|
| | Res | Nonres | Total | Percent | Res | Nonres | Total | Percent |
| High School GPA | | | | | | | | |
| 2 – 2.499 | 1 | 11 | 12 | 0 | 1 | 5 | 6 | 1 |
| 2.5 – 2.999 | 238 | 162 | 400 | 15 | 140 | 41 | 181 | 17 |
| 3 – 3.599 | 1096 | 430 | 1526 | 57 | 536 | 87 | 623 | 58 |
| 3.6 – 4.0 | 561 | 169 | 730 | 27 | 232 | 28 | 260 | 24 |
| Valid Cases | 1896 | 772 | 2668 | 100 | 909 | 161 | 1070 | 100 |
| Means | 3.36 | 3.25 | 3.33 | | 3.31 | 3.19 | 3.29 | |
| Percentile Rank | | | | | | | | |
| 1 – 29 | 34 | 20 | 54 | 2 | 27 | 9 | 36 | 4 |
| 30 – 49 | 322 | 113 | 435 | 18 | 173 | 32 | 205 | 21 |
| 50 – 59 | 292 | 100 | 392 | 17 | 139 | 24 | 163 | 16 |
| 60 – 79 | 710 | 164 | 874 | 37 | 354 | 28 | 382 | 39 |
| 80 – 89 | 258 | 66 | 324 | 14 | 106 | 14 | 120 | 12 |
| 90 – 99 | 213 | 65 | 278 | 12 | 75 | 7 | 82 | 8 |
| Valid Cases | 1829 | 528 | 2357 | 100 | 874 | 114 | 988 | 100 |
| Means | 66.4 | 63.7 | 65.8 | | 64.0 | 57.9 | 63.3 | |
| SAT Verbal | | | | | | | | |
| 200 – 399 | 20 | 14 | 34 | 2 | 7 | 5 | 12 | 3 |
| 400 – 499 | 238 | 151 | 389 | 29 | 96 | 39 | 135 | 32 |
| 500 – 599 | 388 | 268 | 656 | 48 | 158 | 48 | 206 | 48 |
| 600 – 699 | 143 | 108 | 251 | 18 | 49 | 16 | 65 | 15 |
| 700 – 800 | 23 | 11 | 34 | 2 | 7 | 2 | 9 | 2 |
| Valid Cases | 812 | 552 | 1364 | 100 | 317 | 110 | 427 | 100 |
| Means | 534 | 534 | 534 | | 528 | 515 | 525 | |
| SAT Math | | | | | | | | |
| 200 – 399 | 20 | 8 | 28 | 2 | 6 | 2 | 8 | 2 |
| 400 – 499 | 202 | 103 | 305 | 22 | 73 | 24 | 97 | 23 |
| 500 – 599 | 394 | 284 | 678 | 50 | 173 | 52 | 225 | 53 |
| 600 – 699 | 180 | 137 | 317 | 23 | 59 | 29 | 88 | 21 |
| 700 – 800 | 16 | 20 | 36 | 3 | 6 | 3 | 9 | 2 |
| Valid Cases | 812 | 552 | 1364 | 100 | 317 | 110 | 427 | 100 |
| Means | 541 | 556 | 547 | | 539 | 550 | 542 | |
| ACT Composite | | | | | | | | |
| 1 – 14 | 2 | 1 | 3 | 0 | 1 | 0 | 1 | 0 |
| 15 – 18 | 114 | 33 | 147 | 6 | 55 | 6 | 61 | 6 |
| 19 – 22 | 804 | 164 | 968 | 41 | 387 | 36 | 423 | 42 |
| 23 – 26 | 731 | 203 | 934 | 39 | 362 | 39 | 401 | 40 |
| 27 – 36 | 260 | 78 | 338 | 14 | 98 | 15 | 113 | 11 |
| Valid Cases | 1911 | 479 | 2390 | 100 | 903 | 96 | 999 | 100 |
| Means | 22.9 | 23.2 | 23.0 | | 22.7 | 23.1 | 22.7 | |
| CCHE Index | | | | | | | | |
| 90 – 100 | 402 | 160 | 562 | 20 | 221 | 44 | 265 | 24 |
| 101 – 114 | 1091 | 454 | 1545 | 56 | 535 | 97 | 632 | 58 |
| 115 – 160 | 471 | 181 | 652 | 24 | 174 | 22 | 196 | 18 |
| Valid Cases | 1964 | 795 | 2759 | 100 | 930 | 163 | 1093 | 100 |
| Means | 109 | 108 | 108 | | 107 | 106 | 107 | |

Office of Budgets and Institutional Analysis
Freshmen Profile
Fall 2005

| Liberal Arts | Admitted N= 1707 | | | | Enrolled N=609 | | | |
|------------------------|------------------|-------------|-------------|---------|----------------|-------------|-------------|---------|
| | Res | Nonres | Total | Percent | Res | Nonres | Total | Percent |
| High School GPA | | | | | | | | |
| 2 – 2.499 | 1 | 1 | 2 | 0 | 1 | 0 | 1 | 0 |
| 2.5 – 2.999 | 71 | 57 | 128 | 8 | 41 | 12 | 53 | 9 |
| 3 – 3.599 | 527 | 217 | 744 | 48 | 241 | 44 | 285 | 50 |
| 3.6 – 4.0 | 479 | 209 | 688 | 44 | 205 | 23 | 228 | 40 |
| Valid Cases | 1078 | 484 | 1562 | 100 | 488 | 79 | 567 | 100 |
| Means | 3.48 | 3.44 | 3.47 | | 3.46 | 3.31 | 3.44 | |
| Percentile Rank | | | | | | | | |
| 1 – 29 | 5 | 8 | 13 | 1 | 5 | 2 | 7 | 1 |
| 30 – 49 | 126 | 36 | 162 | 11 | 67 | 13 | 80 | 14 |
| 50 – 59 | 131 | 45 | 176 | 12 | 57 | 11 | 68 | 12 |
| 60 – 79 | 396 | 132 | 528 | 36 | 178 | 25 | 203 | 37 |
| 80 – 89 | 208 | 76 | 284 | 19 | 91 | 10 | 101 | 18 |
| 90 – 99 | 213 | 82 | 295 | 20 | 89 | 5 | 94 | 17 |
| Valid Cases | 1079 | 379 | 1458 | 100 | 487 | 66 | 553 | 100 |
| Means | 72.1 | 73.1 | 72.4 | | 70.7 | 64.7 | 70.0 | |
| SAT Verbal | | | | | | | | |
| 200 – 399 | 5 | 1 | 6 | 1 | 1 | 0 | 1 | 0 |
| 400 – 499 | 73 | 50 | 123 | 14 | 37 | 10 | 47 | 18 |
| 500 – 599 | 233 | 179 | 412 | 46 | 85 | 27 | 112 | 44 |
| 600 – 699 | 157 | 118 | 275 | 31 | 57 | 19 | 76 | 30 |
| 700 – 800 | 52 | 26 | 78 | 9 | 15 | 4 | 19 | 7 |
| Valid Cases | 520 | 374 | 894 | 100 | 195 | 60 | 255 | 100 |
| Means | 580 | 579 | 579 | | 567 | 572 | 568 | |
| SAT Math | | | | | | | | |
| 200 – 399 | 13 | 4 | 17 | 2 | 4 | 0 | 4 | 2 |
| 400 – 499 | 98 | 54 | 152 | 17 | 46 | 13 | 59 | 23 |
| 500 – 599 | 266 | 180 | 446 | 50 | 99 | 32 | 131 | 51 |
| 600 – 699 | 119 | 123 | 242 | 27 | 38 | 15 | 53 | 21 |
| 700 – 800 | 24 | 13 | 37 | 4 | 8 | 0 | 8 | 3 |
| Valid Cases | 520 | 374 | 894 | 100 | 195 | 60 | 255 | 100 |
| Means | 553 | 568 | 559 | | 544 | 545 | 544 | |
| ACT Composite | | | | | | | | |
| 1 – 14 | 0 | 1 | 1 | 0 | 0 | 0 | 0 | 0 |
| 15 – 18 | 35 | 10 | 45 | 3 | 16 | 0 | 16 | 3 |
| 19 – 22 | 307 | 79 | 386 | 26 | 164 | 21 | 185 | 33 |
| 23 – 26 | 497 | 126 | 623 | 43 | 210 | 25 | 235 | 42 |
| 27 – 36 | 299 | 103 | 402 | 28 | 118 | 7 | 125 | 22 |
| Valid Cases | 1138 | 319 | 1457 | 100 | 508 | 53 | 561 | 100 |
| Means | 24.4 | 24.7 | 24.5 | | 24.1 | 23.4 | 24.0 | |
| CCHE Index | | | | | | | | |
| 90 – 100 | 95 | 43 | 138 | 8 | 45 | 11 | 56 | 9 |
| 101 – 114 | 551 | 228 | 779 | 46 | 267 | 47 | 314 | 52 |
| 115 – 160 | 523 | 247 | 770 | 46 | 207 | 26 | 233 | 39 |
| Valid Cases | 1169 | 518 | 1687 | 100 | 519 | 84 | 603 | 100 |
| Means | 114 | 115 | 114 | | 113 | 111 | 112 | |

Office of Budgets and Institutional Analysis
Freshmen Profile
Fall 2005

Natural Resources

Admitted N= 245

Enrolled N=107

High School GPA

| | Res | Nonres | Total | Percent | Res | Nonres | Total | Percent |
|--------------|-------------|-------------|-------------|---------|-------------|-------------|-------------|---------|
| 2 – 2.499 | 1 | 0 | 1 | 0 | 1 | 0 | 1 | 1 |
| 2.5 – 2.999 | 11 | 15 | 26 | 12 | 9 | 8 | 17 | 17 |
| 3 – 3.599 | 43 | 48 | 91 | 41 | 25 | 13 | 38 | 39 |
| 3.6 – 4.0 | 46 | 59 | 105 | 47 | 25 | 17 | 42 | 43 |
| Valid Cases | 101 | 122 | 223 | 100 | 60 | 38 | 98 | 100 |
| Means | 3.48 | 3.47 | 3.47 | | 3.43 | 3.41 | 3.42 | |

Percentile Rank

| | | | | | | | | |
|--------------|-------------|-------------|-------------|-----|-------------|-------------|-------------|-----|
| 1 – 29 | 3 | 1 | 4 | 2 | 3 | 0 | 3 | 3 |
| 30 – 49 | 10 | 6 | 16 | 8 | 7 | 0 | 7 | 8 |
| 50 – 59 | 11 | 9 | 20 | 10 | 8 | 3 | 11 | 12 |
| 60 – 79 | 30 | 36 | 66 | 33 | 19 | 12 | 31 | 35 |
| 80 – 89 | 20 | 20 | 40 | 20 | 12 | 9 | 21 | 24 |
| 90 – 99 | 24 | 31 | 55 | 27 | 9 | 7 | 16 | 18 |
| Valid Cases | 98 | 103 | 201 | 100 | 58 | 31 | 89 | 100 |
| Means | 72.6 | 76.7 | 74.7 | | 68.0 | 78.8 | 71.8 | |

SAT Verbal

| | | | | | | | | |
|--------------|------------|------------|------------|-----|------------|------------|------------|-----|
| 400 – 499 | 8 | 11 | 19 | 13 | 4 | 2 | 6 | 10 |
| 500 – 599 | 20 | 33 | 53 | 36 | 11 | 9 | 20 | 34 |
| 600 – 699 | 21 | 41 | 62 | 42 | 12 | 14 | 26 | 45 |
| 700 – 800 | 4 | 8 | 12 | 8 | 3 | 3 | 6 | 10 |
| Valid Cases | 53 | 93 | 146 | 100 | 30 | 28 | 58 | 100 |
| Means | 585 | 591 | 589 | | 593 | 605 | 599 | |

SAT Math

| | | | | | | | | |
|--------------|------------|------------|------------|-----|------------|------------|------------|-----|
| 200 – 399 | 1 | 1 | 2 | 1 | 1 | 1 | 2 | 3 |
| 400 – 499 | 6 | 14 | 20 | 14 | 4 | 4 | 8 | 14 |
| 500 – 599 | 28 | 37 | 65 | 45 | 15 | 10 | 25 | 43 |
| 600 – 699 | 17 | 38 | 55 | 38 | 9 | 13 | 22 | 38 |
| 700 – 800 | 1 | 3 | 4 | 3 | 1 | 0 | 1 | 2 |
| Valid Cases | 53 | 93 | 146 | 100 | 30 | 28 | 58 | 100 |
| Means | 565 | 576 | 572 | | 561 | 568 | 565 | |

ACT Composite

| | | | | | | | | |
|--------------|-------------|-------------|-------------|-----|-------------|-------------|-------------|-----|
| 15 – 18 | 3 | 2 | 5 | 3 | 2 | 0 | 2 | 2 |
| 19 – 22 | 32 | 19 | 51 | 27 | 21 | 6 | 27 | 29 |
| 23 – 26 | 41 | 31 | 72 | 38 | 23 | 12 | 35 | 38 |
| 27 – 36 | 30 | 31 | 61 | 32 | 17 | 11 | 28 | 30 |
| Valid Cases | 106 | 83 | 189 | 100 | 63 | 29 | 92 | 100 |
| Means | 24.3 | 25.3 | 24.8 | | 24.0 | 25.7 | 24.5 | |

CCHE Index

| | | | | | | | | |
|--------------|------------|------------|------------|-----|------------|------------|------------|-----|
| 35 – 89 | 1 | 0 | 1 | 0 | 1 | 0 | 1 | 1 |
| 90 – 100 | 9 | 13 | 22 | 9 | 8 | 4 | 12 | 11 |
| 101 – 114 | 47 | 43 | 90 | 37 | 27 | 16 | 43 | 41 |
| 115 – 160 | 52 | 77 | 129 | 53 | 28 | 22 | 50 | 47 |
| Valid Cases | 109 | 133 | 242 | 100 | 64 | 42 | 106 | 100 |
| Means | 114 | 116 | 115 | | 112 | 116 | 113 | |

Office of Budgets and Institutional Analysis
Freshmen Profile
Fall 2005

Natural Sciences

| | Admitted N= 1602 | | | | Enrolled N=638 | | | |
|------------------------|-------------------------|-------------|-------------|---------|-----------------------|-------------|-------------|---------|
| | Res | Nonres | Total | Percent | Res | Nonres | Total | Percent |
| High School GPA | | | | | | | | |
| .1 – 1.999 | 0 | 1 | 1 | 0 | 0 | 0 | 0 | 0 |
| 2 – 2.499 | 1 | 0 | 1 | 0 | 1 | 0 | 1 | 0 |
| 2.5 – 2.999 | 57 | 38 | 95 | 7 | 23 | 8 | 31 | 5 |
| 3 – 3.599 | 382 | 199 | 581 | 41 | 191 | 53 | 244 | 43 |
| 3.6 – 4.0 | 505 | 220 | 725 | 52 | 244 | 45 | 289 | 51 |
| Valid Cases | 945 | 458 | 1403 | 100 | 459 | 106 | 565 | 100 |
| Means | 3.55 | 3.49 | 3.53 | | 3.54 | 3.44 | 3.52 | |
| Percentile Rank | | | | | | | | |
| 1 – 29 | 9 | 8 | 17 | 1 | 6 | 3 | 9 | 2 |
| 30 – 49 | 72 | 34 | 106 | 8 | 38 | 8 | 46 | 8 |
| 50 – 59 | 105 | 41 | 146 | 10 | 56 | 11 | 67 | 11 |
| 60 – 79 | 297 | 110 | 407 | 29 | 145 | 32 | 177 | 30 |
| 80 – 89 | 224 | 74 | 298 | 21 | 115 | 17 | 132 | 22 |
| 90 – 99 | 301 | 126 | 427 | 30 | 142 | 20 | 162 | 27 |
| Valid Cases | 1008 | 393 | 1401 | 100 | 502 | 91 | 593 | 100 |
| Means | 76.8 | 76.1 | 76.6 | | 76.2 | 73.5 | 75.8 | |
| SAT Verbal | | | | | | | | |
| 200 – 399 | 4 | 6 | 10 | 1 | 2 | 1 | 3 | 1 |
| 400 – 499 | 98 | 65 | 163 | 19 | 42 | 14 | 56 | 19 |
| 500 – 599 | 205 | 150 | 355 | 42 | 83 | 37 | 120 | 41 |
| 600 – 699 | 154 | 113 | 267 | 32 | 66 | 26 | 92 | 32 |
| 700 – 800 | 34 | 18 | 52 | 6 | 16 | 3 | 19 | 7 |
| Valid Cases | 495 | 352 | 847 | 100 | 209 | 81 | 290 | 100 |
| Means | 568 | 565 | 567 | | 569 | 564 | 568 | |
| SAT Math | | | | | | | | |
| 200 – 399 | 7 | 3 | 10 | 1 | 3 | 0 | 3 | 1 |
| 400 – 499 | 64 | 35 | 99 | 12 | 28 | 11 | 39 | 13 |
| 500 – 599 | 207 | 161 | 368 | 43 | 75 | 33 | 108 | 37 |
| 600 – 699 | 178 | 125 | 303 | 36 | 87 | 29 | 116 | 40 |
| 700 – 800 | 39 | 28 | 67 | 8 | 16 | 8 | 24 | 8 |
| Valid Cases | 495 | 352 | 847 | 100 | 209 | 81 | 290 | 100 |
| Means | 578 | 583 | 580 | | 582 | 584 | 583 | |
| ACT Composite | | | | | | | | |
| 1 – 14 | 1 | 1 | 2 | 0 | 1 | 0 | 1 | 0 |
| 15 – 18 | 41 | 11 | 52 | 4 | 19 | 2 | 21 | 4 |
| 19 – 22 | 269 | 80 | 349 | 25 | 127 | 23 | 150 | 26 |
| 23 – 26 | 440 | 121 | 561 | 41 | 204 | 21 | 225 | 39 |
| 27 – 36 | 310 | 106 | 416 | 30 | 161 | 21 | 182 | 31 |
| Valid Cases | 1061 | 319 | 1380 | 100 | 512 | 67 | 579 | 100 |
| Means | 24.5 | 24.8 | 24.6 | | 24.7 | 24.7 | 24.7 | |
| CCHE Index | | | | | | | | |
| 90 – 100 | 94 | 42 | 136 | 9 | 49 | 15 | 64 | 10 |
| 101 – 114 | 411 | 191 | 602 | 38 | 190 | 48 | 238 | 38 |
| 115 – 160 | 575 | 271 | 846 | 53 | 280 | 52 | 332 | 52 |
| Valid Cases | 1080 | 504 | 1584 | 100 | 519 | 115 | 634 | 100 |
| Means | 116 | 116 | 116 | | 116 | 115 | 116 | |

Office of Budgets and Institutional Analysis
Freshmen Profile
Fall 2005

| Veterinary Medicine + Biomed | Admitted N= 365 | | | | Enrolled N=179 | | | |
|------------------------------|-----------------|-------------|-------------|---------|----------------|-------------|-------------|---------|
| | Res | Nonres | Total | Percent | Res | Nonres | Total | Percent |
| High School GPA | | | | | | | | |
| 2.5 – 2.999 | 7 | 7 | 14 | 4 | 3 | 4 | 7 | 4 |
| 3 – 3.599 | 59 | 42 | 101 | 32 | 41 | 11 | 52 | 33 |
| 3.6 – 4.0 | 111 | 87 | 198 | 63 | 73 | 25 | 98 | 62 |
| Valid Cases | 177 | 136 | 313 | 100 | 117 | 40 | 157 | 100 |
| Means | 3.61 | 3.61 | 3.61 | | 3.62 | 3.55 | 3.60 | |
| Percentile Rank | | | | | | | | |
| 1 – 29 | 1 | 1 | 2 | 1 | 1 | 1 | 2 | 1 |
| 30 – 49 | 10 | 5 | 15 | 5 | 5 | 2 | 7 | 4 |
| 50 – 59 | 17 | 11 | 28 | 9 | 11 | 3 | 14 | 9 |
| 60 – 79 | 51 | 21 | 72 | 24 | 43 | 4 | 47 | 30 |
| 80 – 89 | 51 | 27 | 78 | 26 | 30 | 7 | 37 | 24 |
| 90 – 99 | 58 | 51 | 109 | 36 | 35 | 14 | 49 | 31 |
| Valid Cases | 188 | 116 | 304 | 100 | 125 | 31 | 156 | 100 |
| Means | 79.1 | 81.8 | 80.1 | | 78.2 | 79.5 | 78.4 | |
| SAT Verbal | | | | | | | | |
| 200 – 399 | 3 | 1 | 4 | 2 | 2 | 0 | 2 | 2 |
| 400 – 499 | 12 | 21 | 33 | 16 | 7 | 7 | 14 | 15 |
| 500 – 599 | 39 | 54 | 93 | 45 | 24 | 14 | 38 | 41 |
| 600 – 699 | 27 | 37 | 64 | 31 | 18 | 12 | 30 | 32 |
| 700 – 800 | 4 | 8 | 12 | 6 | 4 | 5 | 9 | 10 |
| Valid Cases | 85 | 121 | 206 | 100 | 55 | 38 | 93 | 100 |
| Means | 567 | 568 | 567 | | 574 | 574 | 574 | |
| SAT Math | | | | | | | | |
| 400 – 499 | 18 | 18 | 36 | 17 | 13 | 2 | 15 | 16 |
| 500 – 599 | 37 | 54 | 91 | 44 | 20 | 14 | 34 | 37 |
| 600 – 699 | 26 | 45 | 71 | 34 | 20 | 18 | 38 | 41 |
| 700 – 800 | 4 | 4 | 8 | 4 | 2 | 4 | 6 | 6 |
| Valid Cases | 85 | 121 | 206 | 100 | 55 | 38 | 93 | 100 |
| Means | 568 | 577 | 573 | | 570 | 603 | 583 | |
| ACT Composite | | | | | | | | |
| 15 – 18 | 5 | 4 | 9 | 3 | 2 | 1 | 3 | 2 |
| 19 – 22 | 47 | 21 | 68 | 23 | 32 | 6 | 38 | 25 |
| 23 – 26 | 79 | 34 | 113 | 38 | 51 | 6 | 57 | 37 |
| 27 – 36 | 67 | 38 | 105 | 36 | 44 | 11 | 55 | 36 |
| Valid Cases | 198 | 97 | 295 | 100 | 129 | 24 | 153 | 100 |
| Means | 24.9 | 25.2 | 25.0 | | 25.0 | 25.1 | 25.0 | |
| CCHE Index | | | | | | | | |
| 90 – 100 | 5 | 9 | 14 | 4 | 3 | 3 | 6 | 3 |
| 101 – 114 | 80 | 51 | 131 | 36 | 50 | 17 | 67 | 38 |
| 115 – 160 | 118 | 101 | 219 | 60 | 78 | 27 | 105 | 59 |
| Valid Cases | 203 | 161 | 364 | 100 | 131 | 47 | 178 | 100 |
| Means | 117 | 119 | 118 | | 118 | 119 | 118 | |

**Fall 2004 Freshmen
and
Their Performance
at CSU
After One Year**

Office of Budgets and Institutional Analysis
 Number of New Freshmen by High School GPA & Rank,
 Test Scores, CCHE Index and CSU GPA
 CSU GPA after One Year for Freshmen Entering Fall 2004

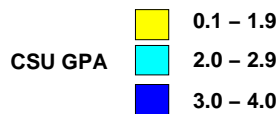
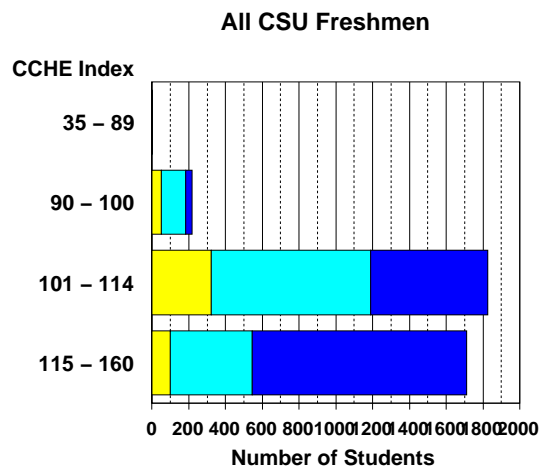
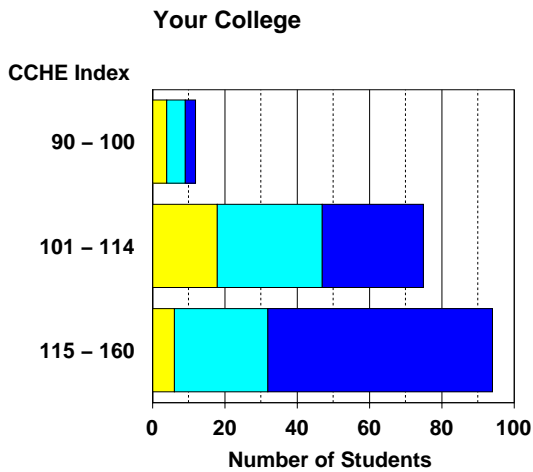
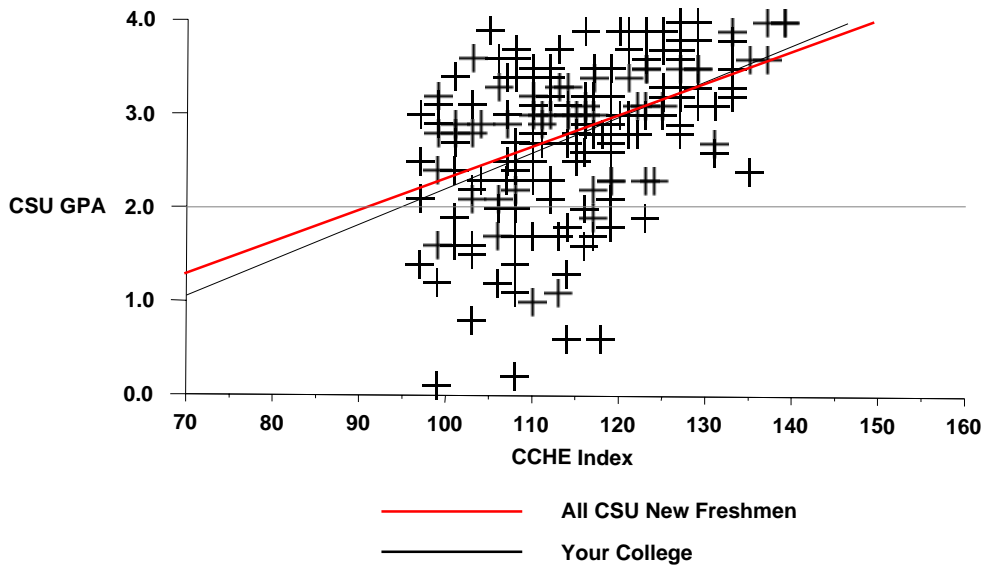
Agricultural Sciences

| | CSU GPA | | | | Total |
|-----------------|-----------|-----------|-----------|-----------|------------|
| | 0.1 – 1.9 | 2.0 – 2.9 | 3.0 – 3.5 | 3.6 – 4.0 | |
| High School GPA | | | | | |
| 2.5 – 2.999 | 7 | 1 | 1 | 1 | 10 |
| 3 – 3.599 | 19 | 27 | 27 | 5 | 78 |
| 3.6 – 4.0 | 2 | 30 | 28 | 18 | 78 |
| Total | 28 | 58 | 56 | 24 | 166 |
| Percentile Rank | | | | | |
| 30 – 49 | 3 | 3 | 2 | 1 | 9 |
| 50 – 59 | 8 | 9 | 4 | | 21 |
| 60 – 79 | 9 | 18 | 22 | 4 | 53 |
| 80 – 89 | 2 | 14 | 5 | 5 | 26 |
| 90 – 99 | 1 | 8 | 22 | 17 | 48 |
| Total | 23 | 52 | 55 | 27 | 157 |
| SAT Verbal | | | | | |
| 400 – 499 | 1 | 9 | 3 | | 13 |
| 500 – 599 | 11 | 14 | 16 | 8 | 49 |
| 600 – 699 | 2 | 7 | 11 | 5 | 25 |
| 700 – 800 | 1 | 2 | 1 | 2 | 6 |
| Total | 15 | 32 | 31 | 15 | 93 |
| SAT Math | | | | | |
| 200 – 399 | | 1 | | | 1 |
| 400 – 499 | 5 | 6 | 5 | 2 | 18 |
| 500 – 599 | 6 | 17 | 16 | 6 | 45 |
| 600 – 699 | 4 | 8 | 10 | 4 | 26 |
| 700 – 800 | | | | 3 | 3 |
| Total | 15 | 32 | 31 | 15 | 93 |
| ACT Composite | | | | | |
| 15 – 18 | | 3 | 1 | | 4 |
| 19 – 22 | 8 | 17 | 8 | 1 | 34 |
| 23 – 26 | 11 | 20 | 23 | 11 | 65 |
| 27 – 36 | 3 | 7 | 14 | 13 | 37 |
| Total | 22 | 47 | 46 | 25 | 140 |
| CCHE Index | | | | | |
| 90 – 100 | 4 | 5 | 3 | | 12 |
| 101 – 114 | 18 | 29 | 22 | 6 | 75 |
| 115 – 160 | 6 | 26 | 36 | 26 | 94 |
| Total | 28 | 60 | 61 | 32 | 181 |

Office of Budgets and Institutional Analysis
 Number of New Freshmen by High School GPA & Rank,
 Test Scores, CCHE Index and CSU GPA
 CSU GPA after One Year for Freshmen Entering Fall 2004

Agricultural Sciences

**Fall 2004 – Spring 2005
 First Year CSU Grades by CCHE Index**



Office of Budgets and Institutional Analysis
 Number of New Freshmen by High School GPA & Rank,
 Test Scores, CCHE Index and CSU GPA
 CSU GPA after One Year for Freshmen Entering Fall 2004

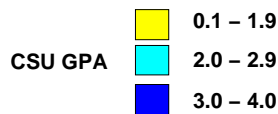
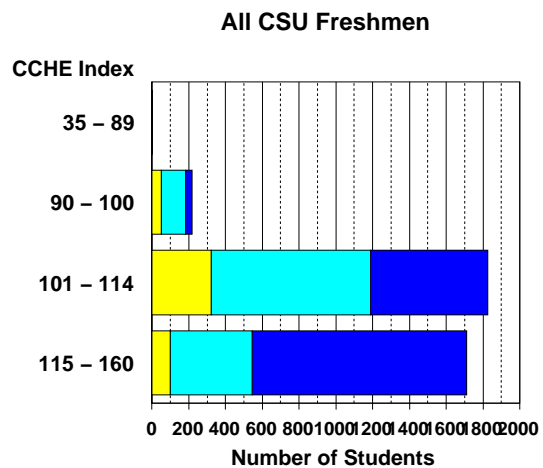
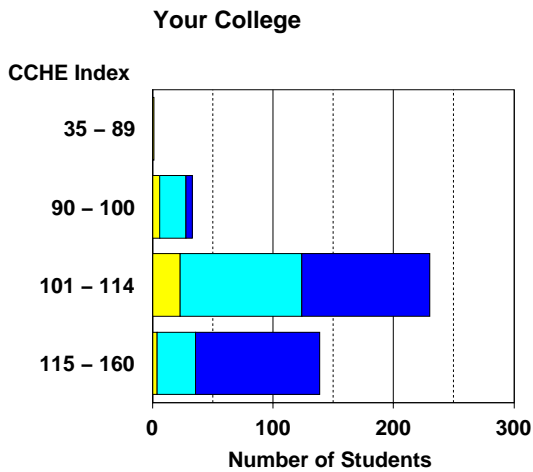
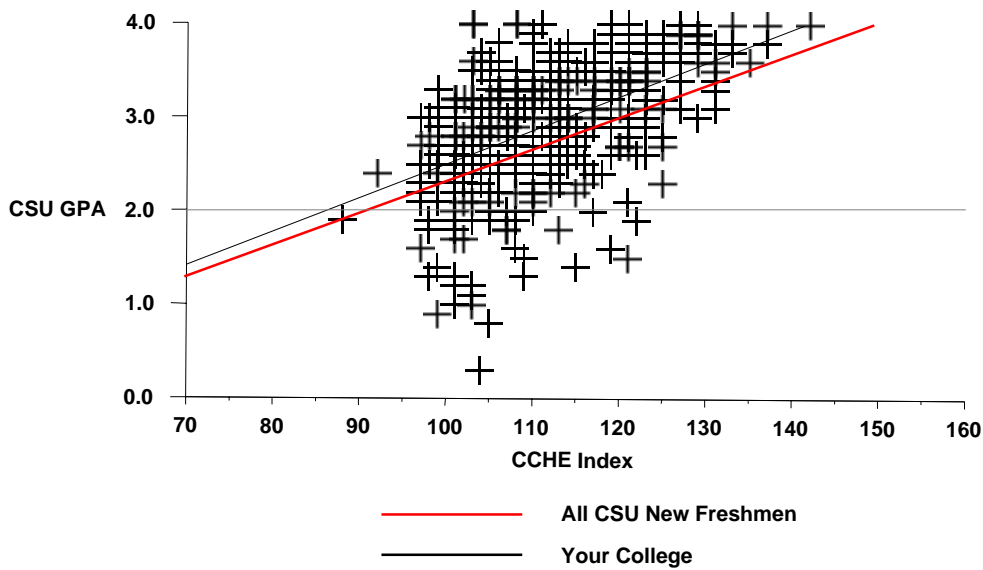
Applied Human Sciences

| | CSU GPA | | | | Total |
|-----------------|-----------|------------|------------|-----------|------------|
| | 0.1 – 1.9 | 2.0 – 2.9 | 3.0 – 3.5 | 3.6 – 4.0 | |
| High School GPA | | | | | |
| 2 – 2.499 | 1 | | | | 1 |
| 2.5 – 2.999 | 8 | 11 | 1 | | 20 |
| 3 – 3.599 | 21 | 92 | 57 | 16 | 186 |
| 3.6 – 4.0 | 4 | 51 | 77 | 42 | 174 |
| Total | 34 | 154 | 135 | 58 | 381 |
| Percentile Rank | | | | | |
| 1 – 29 | 1 | 3 | | | 4 |
| 30 – 49 | 11 | 19 | 8 | 2 | 40 |
| 50 – 59 | 7 | 20 | 8 | 2 | 37 |
| 60 – 79 | 8 | 64 | 53 | 14 | 139 |
| 80 – 89 | 2 | 27 | 43 | 10 | 82 |
| 90 – 99 | | 7 | 18 | 40 | 65 |
| Total | 29 | 140 | 130 | 68 | 367 |
| SAT Verbal | | | | | |
| 200 – 399 | 1 | 7 | | | 8 |
| 400 – 499 | 7 | 20 | 16 | 3 | 46 |
| 500 – 599 | 12 | 23 | 25 | 20 | 80 |
| 600 – 699 | 1 | 8 | 7 | 10 | 26 |
| 700 – 800 | | 1 | | | 1 |
| Total | 21 | 59 | 48 | 33 | 161 |
| SAT Math | | | | | |
| 200 – 399 | | 4 | 1 | | 5 |
| 400 – 499 | 3 | 15 | 17 | 4 | 39 |
| 500 – 599 | 17 | 32 | 18 | 17 | 84 |
| 600 – 699 | 1 | 8 | 12 | 10 | 31 |
| 700 – 800 | | | | 2 | 2 |
| Total | 21 | 59 | 48 | 33 | 161 |
| ACT Composite | | | | | |
| 15 – 18 | 2 | 10 | 4 | | 16 |
| 19 – 22 | 8 | 68 | 58 | 8 | 142 |
| 23 – 26 | 14 | 52 | 50 | 37 | 153 |
| 27 – 36 | 2 | 8 | 18 | 25 | 53 |
| Total | 26 | 138 | 130 | 70 | 364 |
| CCHE Index | | | | | |
| 35 – 89 | 1 | | | | 1 |
| 90 – 100 | 6 | 22 | 5 | | 33 |
| 101 – 114 | 23 | 101 | 85 | 21 | 230 |
| 115 – 160 | 4 | 32 | 50 | 53 | 139 |
| Total | 34 | 155 | 140 | 74 | 403 |

Office of Budgets and Institutional Analysis
 Number of New Freshmen by High School GPA & Rank,
 Test Scores, CCHE Index and CSU GPA
 CSU GPA after One Year for Freshmen Entering Fall 2004

Applied Human Sciences

**Fall 2004 – Spring 2005
 First Year CSU Grades by CCHE Index**



Office of Budgets and Institutional Analysis
 Number of New Freshmen by High School GPA & Rank,
 Test Scores, CCHE Index and CSU GPA
 CSU GPA after One Year for Freshmen Entering Fall 2004

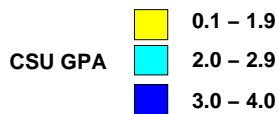
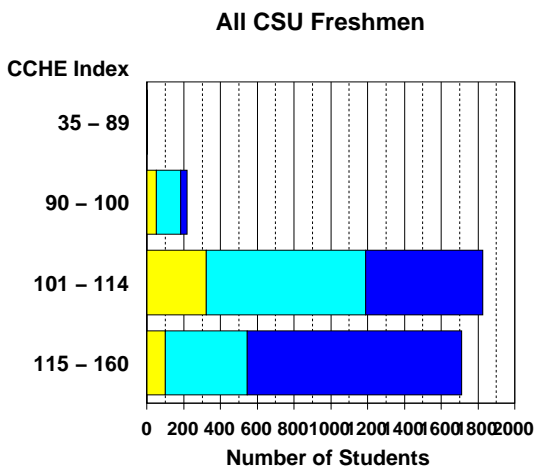
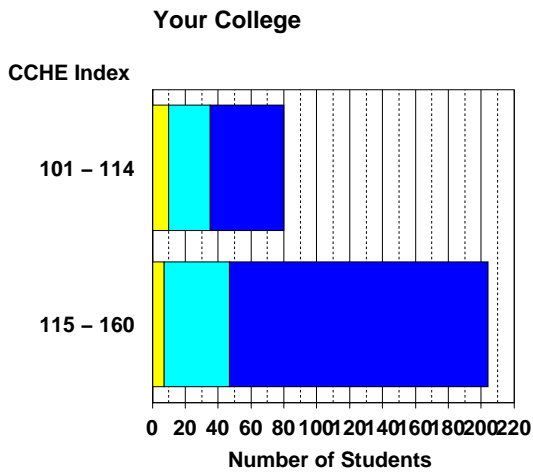
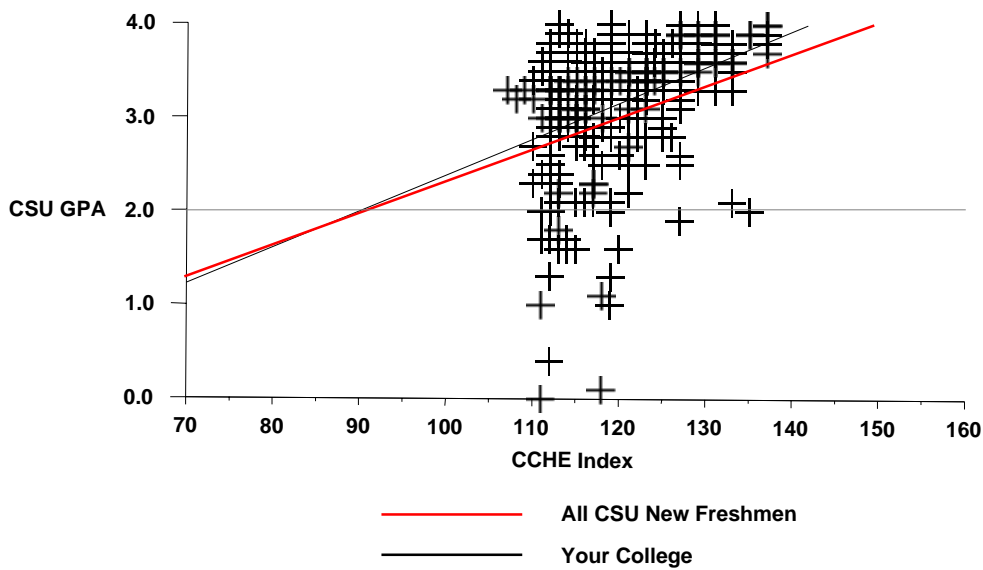
Business

| | CSU GPA | | | | Total |
|-----------------|-----------|-----------|------------|-----------|------------|
| | 0.1 – 1.9 | 2.0 – 2.9 | 3.0 – 3.5 | 3.6 – 4.0 | |
| High School GPA | | | | | |
| 2.5 – 2.999 | | 1 | 2 | | 3 |
| 3 – 3.599 | 9 | 27 | 31 | 8 | 75 |
| 3.6 – 4.0 | 9 | 35 | 73 | 65 | 182 |
| Total | 18 | 63 | 106 | 73 | 260 |
| Percentile Rank | | | | | |
| 30 – 49 | 1 | 1 | 1 | | 3 |
| 50 – 59 | 1 | 9 | 6 | 2 | 18 |
| 60 – 79 | 8 | 23 | 36 | 14 | 81 |
| 80 – 89 | 5 | 16 | 36 | 22 | 79 |
| 90 – 99 | 2 | 13 | 27 | 44 | 86 |
| Total | 17 | 62 | 106 | 82 | 267 |
| SAT Verbal | | | | | |
| 400 – 499 | 1 | 7 | 9 | 6 | 23 |
| 500 – 599 | 2 | 19 | 27 | 18 | 66 |
| 600 – 699 | 2 | 11 | 12 | 25 | 50 |
| 700 – 800 | | | | 3 | 3 |
| Total | 5 | 37 | 48 | 52 | 142 |
| SAT Math | | | | | |
| 200 – 399 | | | 1 | | 1 |
| 400 – 499 | | 6 | 9 | 3 | 18 |
| 500 – 599 | 1 | 14 | 21 | 20 | 56 |
| 600 – 699 | 4 | 13 | 17 | 25 | 59 |
| 700 – 800 | | 4 | | 4 | 8 |
| Total | 5 | 37 | 48 | 52 | 142 |
| ACT Composite | | | | | |
| 15 – 18 | | 1 | | | 1 |
| 19 – 22 | 5 | 9 | 19 | 9 | 42 |
| 23 – 26 | 7 | 33 | 59 | 28 | 127 |
| 27 – 36 | 4 | 14 | 32 | 43 | 93 |
| Total | 16 | 57 | 110 | 80 | 263 |
| CCHE Index | | | | | |
| 101 – 114 | 11 | 25 | 35 | 10 | 81 |
| 115 – 160 | 7 | 40 | 79 | 78 | 204 |
| Total | 18 | 65 | 114 | 88 | 285 |

Office of Budgets and Institutional Analysis
 Number of New Freshmen by High School GPA & Rank,
 Test Scores, CCHE Index and CSU GPA
 CSU GPA after One Year for Freshmen Entering Fall 2004

Business

**Fall 2004 – Spring 2005
 First Year CSU Grades by CCHE Index**



Office of Budgets and Institutional Analysis
 Number of New Freshmen by High School GPA & Rank,
 Test Scores, CCHE Index and CSU GPA
 CSU GPA after One Year for Freshmen Entering Fall 2004

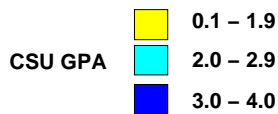
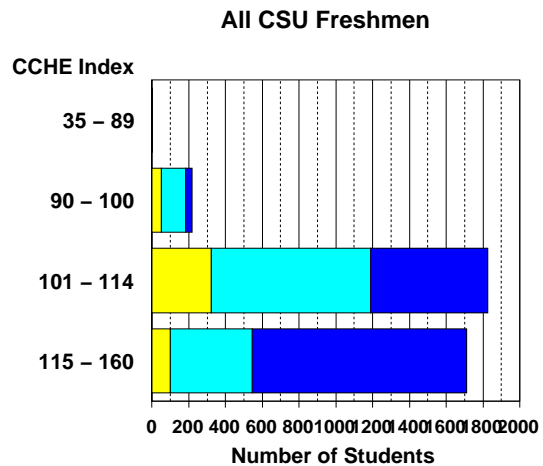
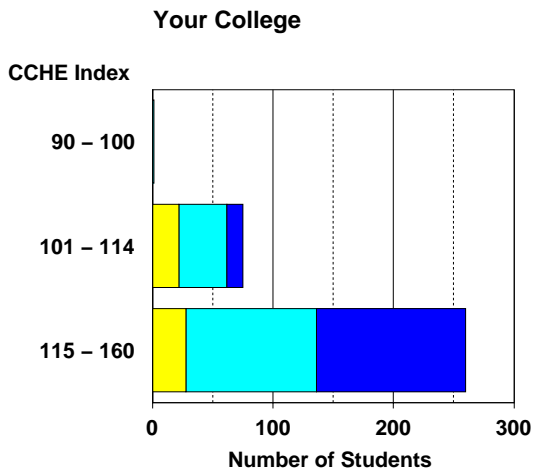
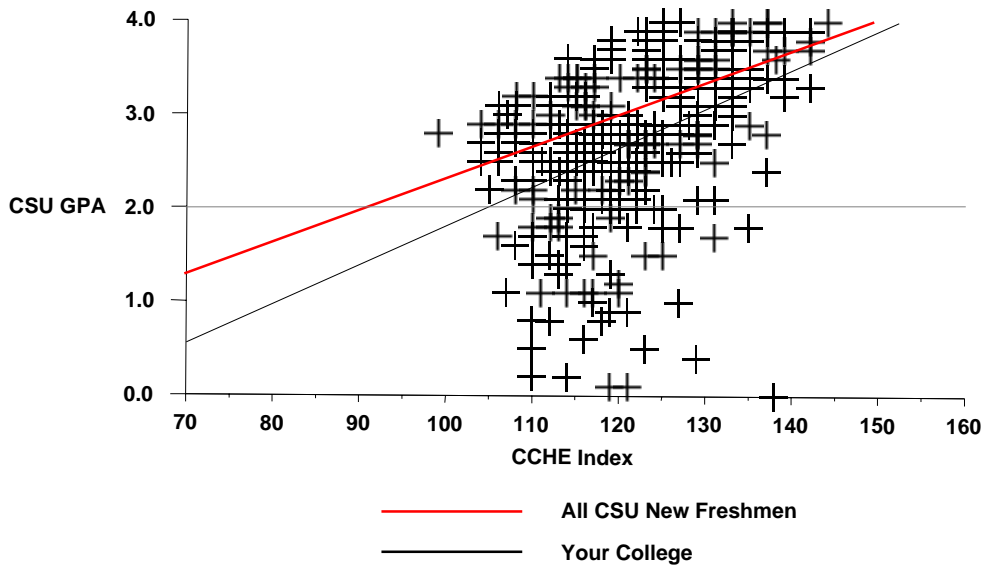
Engineering

| | CSU GPA | | | | Total |
|-----------------|-----------|------------|-----------|-----------|------------|
| | 0.1 – 1.9 | 2.0 – 2.9 | 3.0 – 3.5 | 3.6 – 4.0 | |
| High School GPA | | | | | |
| 3 – 3.599 | 28 | 53 | 16 | 2 | 99 |
| 3.6 – 4.0 | 21 | 82 | 48 | 32 | 183 |
| Total | 49 | 135 | 64 | 34 | 282 |
| Percentile Rank | | | | | |
| 1 – 29 | 1 | | | | 1 |
| 30 – 49 | 4 | 9 | 2 | | 15 |
| 50 – 59 | 6 | 8 | 4 | | 18 |
| 60 – 79 | 22 | 55 | 15 | 2 | 94 |
| 80 – 89 | 11 | 38 | 21 | 10 | 80 |
| 90 – 99 | 5 | 29 | 36 | 37 | 107 |
| Total | 49 | 139 | 78 | 49 | 315 |
| SAT Verbal | | | | | |
| 200 – 399 | | 1 | | | 1 |
| 400 – 499 | 2 | 7 | 5 | 4 | 18 |
| 500 – 599 | 16 | 45 | 21 | 15 | 97 |
| 600 – 699 | 2 | 21 | 24 | 14 | 61 |
| 700 – 800 | 1 | 3 | 3 | 5 | 12 |
| Total | 21 | 77 | 53 | 38 | 189 |
| SAT Math | | | | | |
| 400 – 499 | 2 | 3 | 1 | 1 | 7 |
| 500 – 599 | 10 | 24 | 9 | 6 | 49 |
| 600 – 699 | 7 | 41 | 31 | 16 | 95 |
| 700 – 800 | 2 | 9 | 12 | 15 | 38 |
| Total | 21 | 77 | 53 | 38 | 189 |
| ACT Composite | | | | | |
| 19 – 22 | 4 | 16 | 4 | | 24 |
| 23 – 26 | 29 | 65 | 24 | 13 | 131 |
| 27 – 36 | 17 | 56 | 39 | 37 | 149 |
| Total | 50 | 137 | 67 | 50 | 304 |
| CCHE Index | | | | | |
| 90 – 100 | | 1 | | | 1 |
| 101 – 114 | 22 | 40 | 12 | 1 | 75 |
| 115 – 160 | 29 | 108 | 70 | 54 | 261 |
| Total | 51 | 149 | 82 | 55 | 337 |

Office of Budgets and Institutional Analysis
 Number of New Freshmen by High School GPA & Rank,
 Test Scores, CCHE Index and CSU GPA
 CSU GPA after One Year for Freshmen Entering Fall 2004

Engineering

**Fall 2004 – Spring 2005
 First Year CSU Grades by CCHE Index**



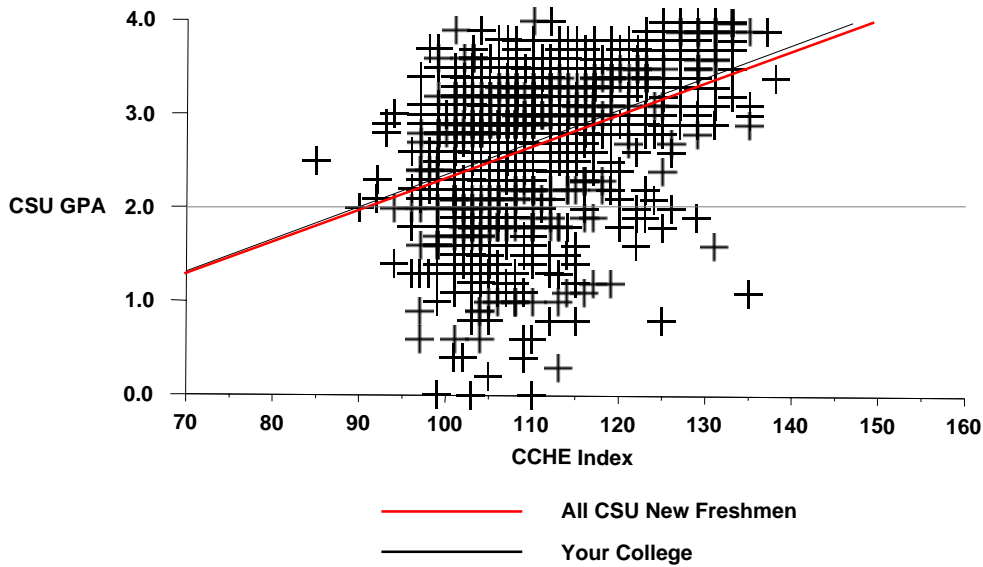
Office of Budgets and Institutional Analysis
 Number of New Freshmen by High School GPA & Rank,
 Test Scores, CCHE Index and CSU GPA
 CSU GPA after One Year for Freshmen Entering Fall 2004

| Intra-University | CSU GPA | | | | Total |
|------------------|------------|------------|------------|------------|--------------|
| | 0.1 – 1.9 | 2.0 – 2.9 | 3.0 – 3.5 | 3.6 – 4.0 | |
| High School GPA | | | | | |
| 2 – 2.499 | | 1 | | | 1 |
| 2.5 – 2.999 | 29 | 68 | 19 | | 116 |
| 3 – 3.599 | 110 | 317 | 154 | 33 | 614 |
| 3.6 – 4.0 | 29 | 95 | 128 | 77 | 329 |
| Total | 168 | 481 | 301 | 110 | 1,060 |
| Percentile Rank | | | | | |
| 1 – 29 | 9 | 10 | 3 | | 22 |
| 30 – 49 | 33 | 92 | 41 | 6 | 172 |
| 50 – 59 | 34 | 77 | 33 | 8 | 152 |
| 60 – 79 | 60 | 195 | 121 | 30 | 406 |
| 80 – 89 | 21 | 55 | 59 | 25 | 160 |
| 90 – 99 | 3 | 21 | 34 | 53 | 111 |
| Total | 160 | 450 | 291 | 122 | 1,023 |
| SAT Verbal | | | | | |
| 200 – 399 | 2 | 8 | 2 | | 12 |
| 400 – 499 | 24 | 58 | 41 | 7 | 130 |
| 500 – 599 | 32 | 122 | 70 | 26 | 250 |
| 600 – 699 | 13 | 21 | 20 | 30 | 84 |
| 700 – 800 | | 5 | 2 | 2 | 9 |
| Total | 71 | 214 | 135 | 65 | 485 |
| SAT Math | | | | | |
| 200 – 399 | | 8 | 1 | | 9 |
| 400 – 499 | 17 | 49 | 34 | 10 | 110 |
| 500 – 599 | 38 | 120 | 74 | 26 | 258 |
| 600 – 699 | 15 | 35 | 23 | 27 | 100 |
| 700 – 800 | 1 | 2 | 3 | 2 | 8 |
| Total | 71 | 214 | 135 | 65 | 485 |
| ACT Composite | | | | | |
| 1 – 14 | | 1 | | | 1 |
| 15 – 18 | 7 | 16 | 3 | 1 | 27 |
| 19 – 22 | 61 | 204 | 108 | 26 | 399 |
| 23 – 26 | 56 | 183 | 139 | 45 | 423 |
| 27 – 36 | 20 | 39 | 45 | 47 | 151 |
| Total | 144 | 443 | 295 | 119 | 1,001 |
| CCHE Index | | | | | |
| 35 – 89 | | 1 | | | 1 |
| 90 – 100 | 20 | 71 | 13 | 3 | 107 |
| 101 – 114 | 129 | 348 | 198 | 41 | 716 |
| 115 – 160 | 18 | 65 | 101 | 83 | 267 |
| Total | 167 | 485 | 312 | 127 | 1,091 |

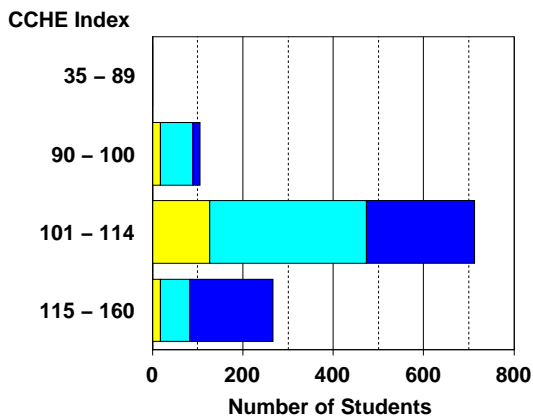
Office of Budgets and Institutional Analysis
 Number of New Freshmen by High School GPA & Rank,
 Test Scores, CCHE Index and CSU GPA
 CSU GPA after One Year for Freshmen Entering Fall 2004

Intra-University

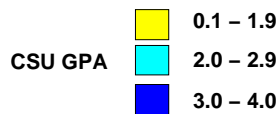
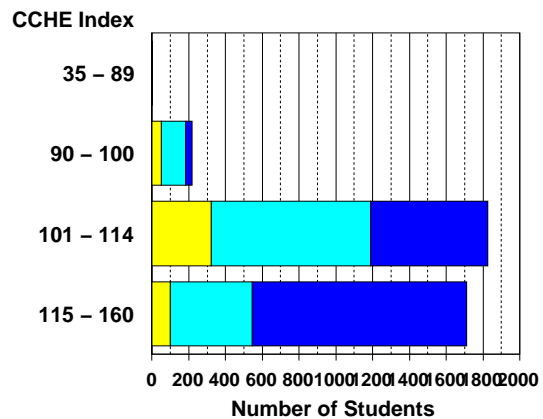
**Fall 2004 – Spring 2005
 First Year CSU Grades by CCHE Index**



Your College



All CSU Freshmen



Office of Budgets and Institutional Analysis
 Number of New Freshmen by High School GPA & Rank,
 Test Scores, CCHE Index and CSU GPA
 CSU GPA after One Year for Freshmen Entering Fall 2004

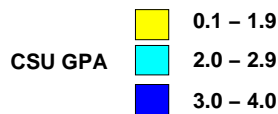
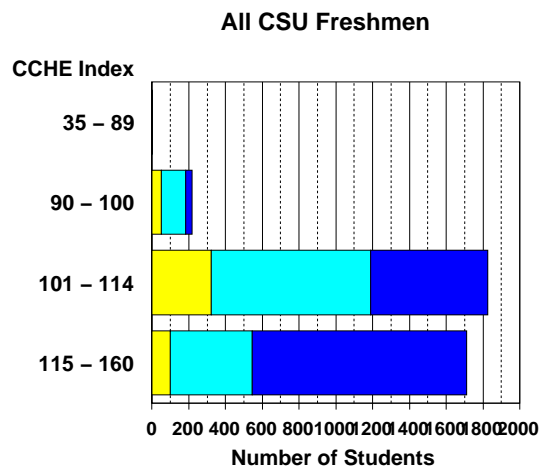
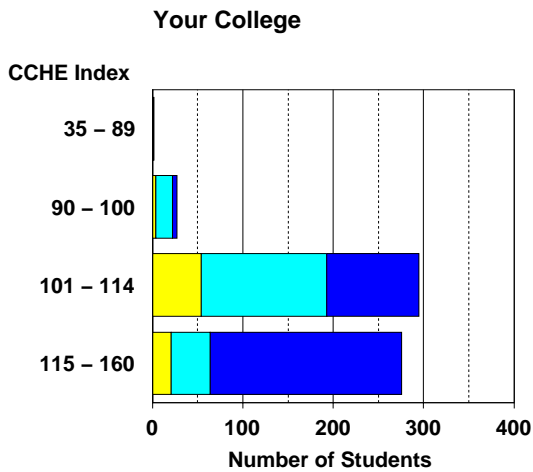
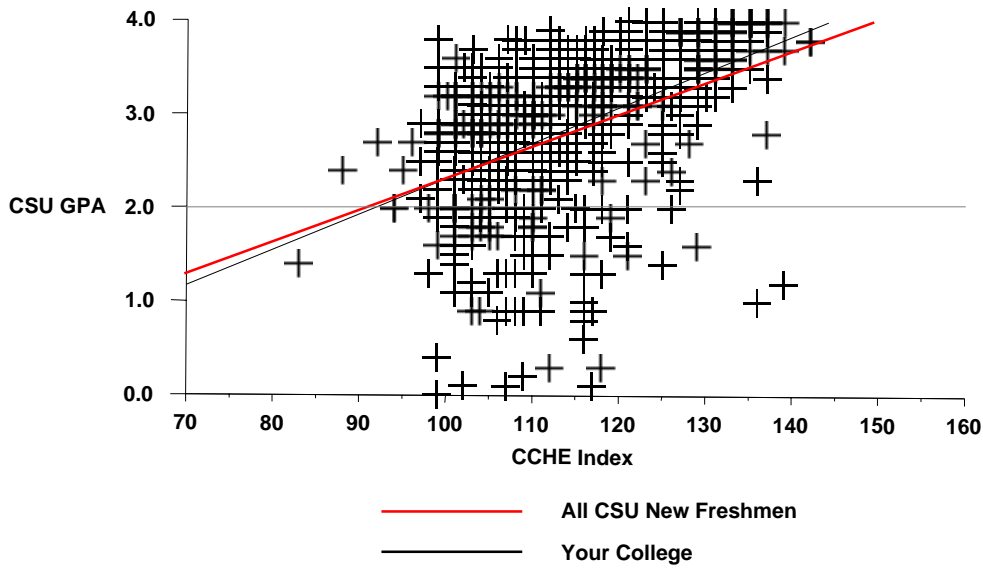
Liberal Arts

| | CSU GPA | | | | Total |
|-----------------|-----------|------------|------------|------------|------------|
| | 0.1 – 1.9 | 2.0 – 2.9 | 3.0 – 3.5 | 3.6 – 4.0 | |
| High School GPA | | | | | |
| 2 – 2.499 | 2 | | 1 | | 3 |
| 2.5 – 2.999 | 17 | 26 | 8 | 2 | 53 |
| 3 – 3.599 | 45 | 120 | 66 | 18 | 249 |
| 3.6 – 4.0 | 16 | 54 | 100 | 86 | 256 |
| Total | 80 | 200 | 175 | 106 | 561 |
| Percentile Rank | | | | | |
| 1 – 29 | 2 | 5 | 4 | 1 | 12 |
| 30 – 49 | 22 | 33 | 17 | 3 | 75 |
| 50 – 59 | 19 | 35 | 19 | 3 | 76 |
| 60 – 79 | 20 | 77 | 53 | 19 | 169 |
| 80 – 89 | 5 | 27 | 48 | 29 | 109 |
| 90 – 99 | 6 | 12 | 36 | 70 | 124 |
| Total | 74 | 189 | 177 | 125 | 565 |
| SAT Verbal | | | | | |
| 200 – 399 | | 1 | | | 1 |
| 400 – 499 | 3 | 19 | 12 | 3 | 37 |
| 500 – 599 | 22 | 40 | 36 | 30 | 128 |
| 600 – 699 | 9 | 24 | 26 | 30 | 89 |
| 700 – 800 | 3 | 2 | 4 | 11 | 20 |
| Total | 37 | 86 | 78 | 74 | 275 |
| SAT Math | | | | | |
| 200 – 399 | 2 | 2 | | | 4 |
| 400 – 499 | 12 | 29 | 11 | 12 | 64 |
| 500 – 599 | 13 | 30 | 49 | 28 | 120 |
| 600 – 699 | 10 | 24 | 16 | 30 | 80 |
| 700 – 800 | | 1 | 2 | 4 | 7 |
| Total | 37 | 86 | 78 | 74 | 275 |
| ACT Composite | | | | | |
| 15 – 18 | 2 | 4 | 3 | 1 | 10 |
| 19 – 22 | 17 | 64 | 38 | 11 | 130 |
| 23 – 26 | 33 | 81 | 77 | 34 | 225 |
| 27 – 36 | 18 | 27 | 59 | 75 | 179 |
| Total | 70 | 176 | 177 | 121 | 544 |
| CCHE Index | | | | | |
| 35 – 89 | 1 | 1 | | | 2 |
| 90 – 100 | 5 | 18 | 4 | 1 | 28 |
| 101 – 114 | 54 | 139 | 83 | 19 | 295 |
| 115 – 160 | 21 | 43 | 97 | 115 | 276 |
| Total | 81 | 201 | 184 | 135 | 601 |

Office of Budgets and Institutional Analysis
 Number of New Freshmen by High School GPA & Rank,
 Test Scores, CCHE Index and CSU GPA
 CSU GPA after One Year for Freshmen Entering Fall 2004

Liberal Arts

**Fall 2004 – Spring 2005
 First Year CSU Grades by CCHE Index**



Office of Budgets and Institutional Analysis
 Number of New Freshmen by High School GPA & Rank,
 Test Scores, CCHE Index and CSU GPA
 CSU GPA after One Year for Freshmen Entering Fall 2004

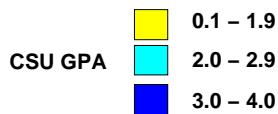
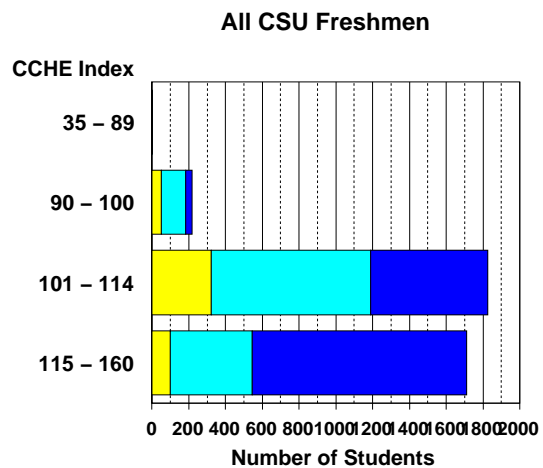
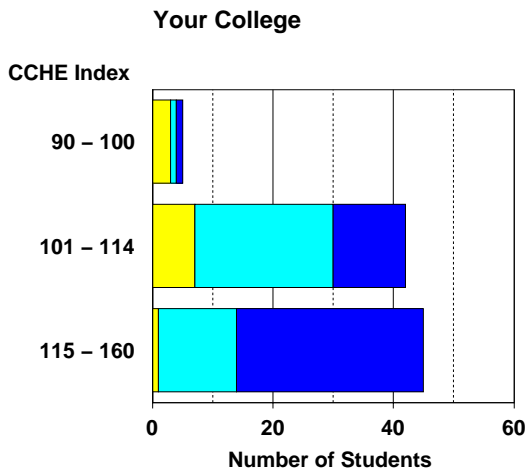
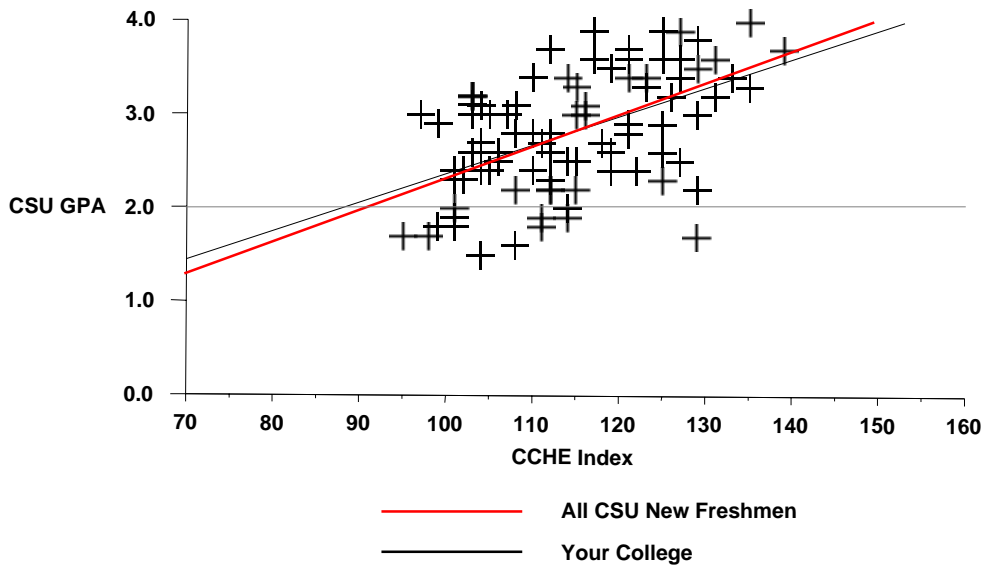
Natural Resources

| | CSU GPA | | | | Total |
|-----------------|-----------|-----------|-----------|-----------|-----------|
| | 0.1 – 1.9 | 2.0 – 2.9 | 3.0 – 3.5 | 3.6 – 4.0 | |
| High School GPA | | | | | |
| 2.5 – 2.999 | 1 | 4 | 2 | | 7 |
| 3 – 3.599 | 9 | 19 | 6 | 1 | 35 |
| 3.6 – 4.0 | 1 | 12 | 21 | 11 | 45 |
| Total | 11 | 35 | 29 | 12 | 87 |
| Percentile Rank | | | | | |
| 1 – 29 | 1 | 1 | | | 2 |
| 30 – 49 | 1 | 4 | 3 | | 8 |
| 50 – 59 | 5 | 1 | 2 | | 8 |
| 60 – 79 | 2 | 17 | 9 | | 28 |
| 80 – 89 | | 8 | 6 | 5 | 19 |
| 90 – 99 | 1 | 1 | 8 | 7 | 17 |
| Total | 10 | 32 | 28 | 12 | 82 |
| SAT Verbal | | | | | |
| 200 – 399 | | | 1 | | 1 |
| 400 – 499 | 3 | 2 | 3 | | 8 |
| 500 – 599 | | 11 | 7 | 3 | 21 |
| 600 – 699 | 2 | 7 | 5 | 5 | 19 |
| 700 – 800 | | | 2 | | 2 |
| Total | 5 | 20 | 18 | 8 | 51 |
| SAT Math | | | | | |
| 200 – 399 | | | 1 | | 1 |
| 400 – 499 | 2 | 4 | 4 | | 10 |
| 500 – 599 | 1 | 11 | 8 | 4 | 24 |
| 600 – 699 | 2 | 4 | 5 | 4 | 15 |
| 700 – 800 | | 1 | | | 1 |
| Total | 5 | 20 | 18 | 8 | 51 |
| ACT Composite | | | | | |
| 15 – 18 | 1 | | | | 1 |
| 19 – 22 | 4 | 7 | 6 | | 17 |
| 23 – 26 | 2 | 14 | 11 | 5 | 32 |
| 27 – 36 | 2 | 5 | 5 | 6 | 18 |
| Total | 9 | 26 | 22 | 11 | 68 |
| CCHE Index | | | | | |
| 90 – 100 | 3 | 1 | 1 | | 5 |
| 101 – 114 | 7 | 23 | 11 | 1 | 42 |
| 115 – 160 | 1 | 13 | 18 | 13 | 45 |
| Total | 11 | 37 | 30 | 14 | 92 |

Office of Budgets and Institutional Analysis
 Number of New Freshmen by High School GPA & Rank,
 Test Scores, CCHE Index and CSU GPA
 CSU GPA after One Year for Freshmen Entering Fall 2004

Natural Resources

**Fall 2004 – Spring 2005
 First Year CSU Grades by CCHE Index**



Office of Budgets and Institutional Analysis
 Number of New Freshmen by High School GPA & Rank,
 Test Scores, CCHE Index and CSU GPA
 CSU GPA after One Year for Freshmen Entering Fall 2004

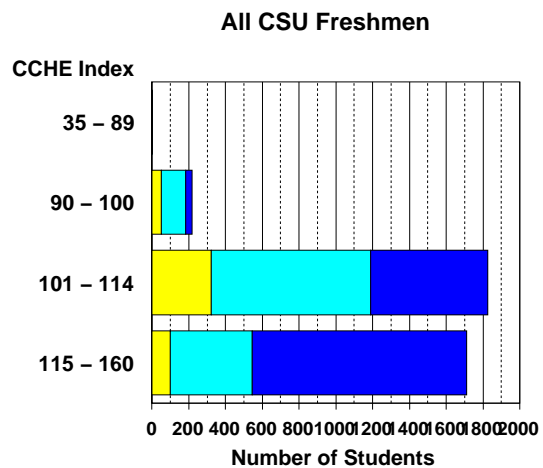
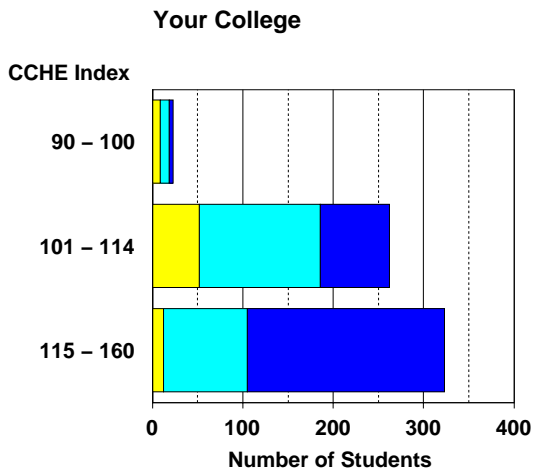
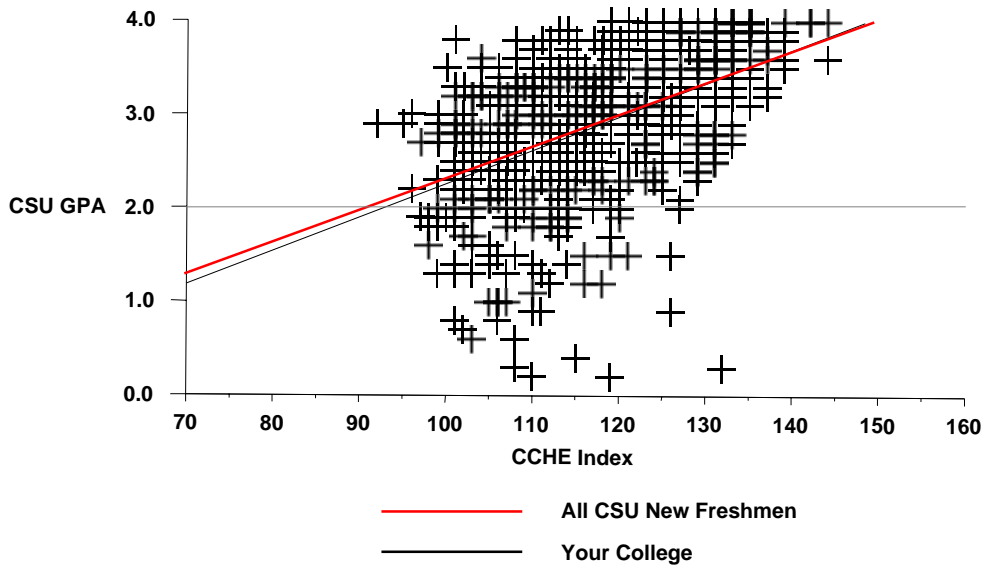
Natural Sciences

| | CSU GPA | | | | Total |
|-----------------|-----------|------------|------------|------------|------------|
| | 0.1 – 1.9 | 2.0 – 2.9 | 3.0 – 3.5 | 3.6 – 4.0 | |
| High School GPA | | | | | |
| 2 – 2.499 | | | 1 | | 1 |
| 2.5 – 2.999 | 9 | 16 | 3 | 2 | 30 |
| 3 – 3.599 | 53 | 118 | 47 | 9 | 227 |
| 3.6 – 4.0 | 11 | 94 | 104 | 88 | 297 |
| Total | 73 | 228 | 155 | 99 | 555 |
| Percentile Rank | | | | | |
| 1 – 29 | 2 | 3 | | 1 | 6 |
| 30 – 49 | 7 | 30 | 8 | | 45 |
| 50 – 59 | 19 | 18 | 7 | 3 | 47 |
| 60 – 79 | 33 | 88 | 46 | 16 | 183 |
| 80 – 89 | 9 | 48 | 53 | 24 | 134 |
| 90 – 99 | | 36 | 51 | 73 | 160 |
| Total | 70 | 223 | 165 | 117 | 575 |
| SAT Verbal | | | | | |
| 200 – 399 | | 1 | | 1 | 2 |
| 400 – 499 | 9 | 28 | 14 | 5 | 56 |
| 500 – 599 | 18 | 49 | 43 | 24 | 134 |
| 600 – 699 | 3 | 23 | 26 | 25 | 77 |
| 700 – 800 | | 3 | 4 | 12 | 19 |
| Total | 30 | 104 | 87 | 67 | 288 |
| SAT Math | | | | | |
| 200 – 399 | | 4 | | | 4 |
| 400 – 499 | 7 | 19 | 13 | 5 | 44 |
| 500 – 599 | 15 | 48 | 39 | 17 | 119 |
| 600 – 699 | 8 | 28 | 27 | 34 | 97 |
| 700 – 800 | | 5 | 8 | 11 | 24 |
| Total | 30 | 104 | 87 | 67 | 288 |
| ACT Composite | | | | | |
| 15 – 18 | 2 | 7 | 3 | | 12 |
| 19 – 22 | 25 | 66 | 36 | 14 | 141 |
| 23 – 26 | 31 | 93 | 69 | 31 | 224 |
| 27 – 36 | 11 | 56 | 51 | 65 | 183 |
| Total | 69 | 222 | 159 | 110 | 560 |
| CCHE Index | | | | | |
| 90 – 100 | 9 | 10 | 4 | | 23 |
| 101 – 114 | 52 | 134 | 58 | 18 | 262 |
| 115 – 160 | 12 | 93 | 111 | 107 | 323 |
| Total | 73 | 237 | 173 | 125 | 608 |

Office of Budgets and Institutional Analysis
 Number of New Freshmen by High School GPA & Rank,
 Test Scores, CCHE Index and CSU GPA
 CSU GPA after One Year for Freshmen Entering Fall 2004

Natural Sciences

**Fall 2004 – Spring 2005
 First Year CSU Grades by CCHE Index**



CSU GPA

- 0.1 - 1.9
- 2.0 - 2.9
- 3.0 - 4.0

Office of Budgets and Institutional Analysis
 Number of New Freshmen by High School GPA & Rank,
 Test Scores, CCHE Index and CSU GPA
 CSU GPA after One Year for Freshmen Entering Fall 2004

| Veterinary Medicine + Biomedical Sci | CSU GPA | | | | Total |
|--------------------------------------|-----------|-----------|-----------|-----------|------------|
| | 0.1 – 1.9 | 2.0 – 2.9 | 3.0 – 3.5 | 3.6 – 4.0 | |
| High School GPA | | | | | |
| 2.5 – 2.999 | 2 | 3 | 1 | | 6 |
| 3 – 3.599 | 15 | 28 | 10 | 2 | 55 |
| 3.6 – 4.0 | 3 | 27 | 32 | 25 | 87 |
| Total | 20 | 58 | 43 | 27 | 148 |
| Percentile Rank | | | | | |
| 30 – 49 | 2 | 5 | | | 7 |
| 50 – 59 | 1 | 4 | 2 | 1 | 8 |
| 60 – 79 | 13 | 23 | 10 | 4 | 50 |
| 80 – 89 | 2 | 16 | 13 | 7 | 38 |
| 90 – 99 | | 8 | 20 | 25 | 53 |
| Total | 18 | 56 | 45 | 37 | 156 |
| SAT Verbal | | | | | |
| 200 – 399 | 2 | | 1 | | 3 |
| 400 – 499 | 1 | 6 | 4 | 2 | 13 |
| 500 – 599 | 6 | 10 | 9 | 10 | 35 |
| 600 – 699 | | 11 | 10 | 8 | 29 |
| 700 – 800 | | | 3 | 3 | 6 |
| Total | 9 | 27 | 27 | 23 | 86 |
| SAT Math | | | | | |
| 200 – 399 | | 1 | | | 1 |
| 400 – 499 | 6 | 3 | 4 | 1 | 14 |
| 500 – 599 | 3 | 17 | 10 | 14 | 44 |
| 600 – 699 | | 6 | 13 | 8 | 27 |
| Total | 9 | 27 | 27 | 23 | 86 |
| ACT Composite | | | | | |
| 15 – 18 | 3 | 1 | | | 4 |
| 19 – 22 | 8 | 15 | 8 | 2 | 33 |
| 23 – 26 | 6 | 23 | 18 | 9 | 56 |
| 27 – 36 | | 11 | 18 | 22 | 51 |
| Total | 17 | 50 | 44 | 33 | 144 |
| CCHE Index | | | | | |
| 90 – 100 | 6 | 5 | 1 | | 12 |
| 101 – 114 | 11 | 29 | 13 | 1 | 54 |
| 115 – 160 | 3 | 26 | 37 | 38 | 104 |
| Total | 20 | 60 | 51 | 39 | 170 |

Office of Budgets and Institutional Analysis
 Number of New Freshmen by High School GPA & Rank,
 Test Scores, CCHE Index and CSU GPA
 CSU GPA after One Year for Freshmen Entering Fall 2004

Veterinary Medicine + Biomedical Sci

Fall 2004 – Spring 2005
 First Year CSU Grades by CCHE Index

